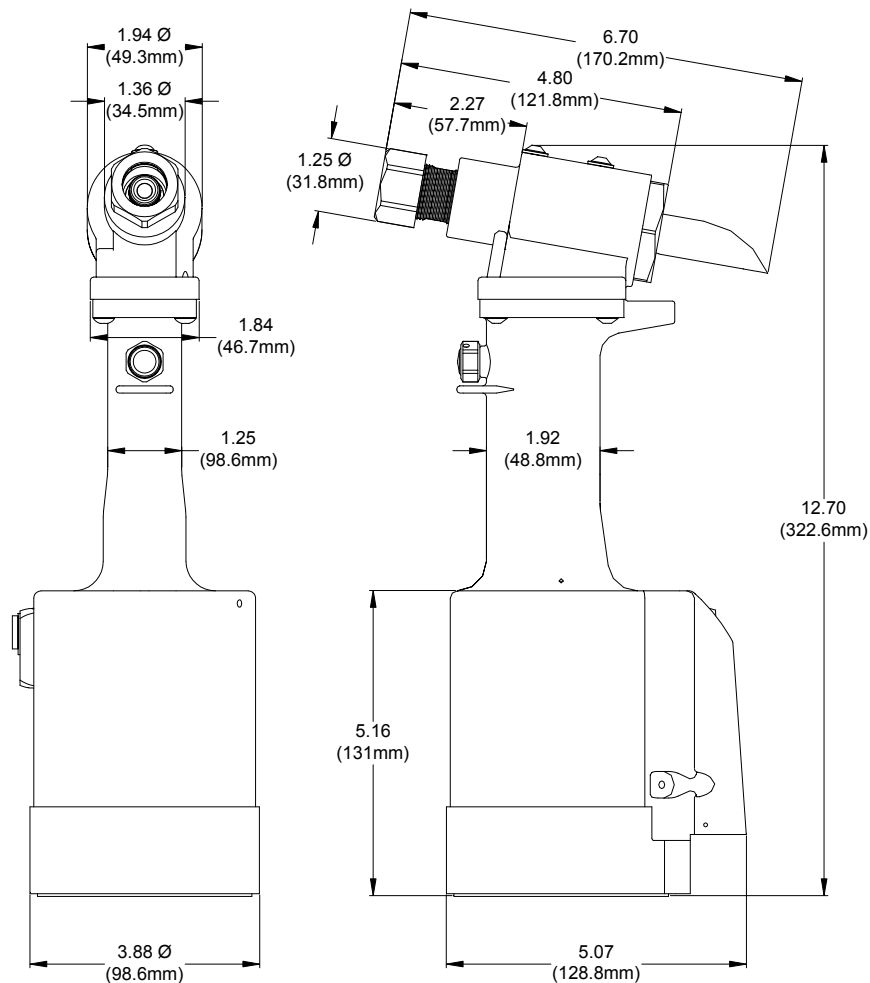


GBP731

INSTALLATION TOOL



DESCRIPTION

The GBP731 is a pneumatic-hydraulic tool designed specifically for the efficient installation of a wide range of blind rivets and lockbolts. It weighs just under 5.6 lbs. and can be operated in any position with one hand. It has a .600 rivet setting stroke and a rated pull load of 4800 pounds on 90 psi air pressure at the air inlet.

The GBP731 riveter operates on a wide range of air pressure, with 90 to 100 psi providing the maximum efficiency. At 90 lbs. air pressure, the GBP731 does not exceed 85 db (A) and consumes 3.9 cfm at 20 cycles per minute.

The air inlet is provided with 1/4-18 female pipe threads for accepting the user's air hose fitting.

NOSE ASSEMBLIES ARE NOT FURNISHED WITH THIS RIVETER AND MUST BE ORDERED SEPARATELY.

GAGE BILT
MADE IN U.S.A.

GAGE BILT PRODUCTS CORP.
44766 Centre Court (586) 226-1500
Clinton Twp. MI 48038 (586) 226-1505 Fax
e-mail:solutions@gagebilt.com / www.gagebilt.com

SELECTION CHART FOR GBP731



FASTENER	DIA.	STRAIGHT		*RIGHT ANGLE ₁	**OFFSET
'A' CODE NAS1398 & NAS1399 'A'	3/32	3A-352A-25		3A-751B-54RA	
	1/8	4A-752B-20	4A-752B-45	4A-751B-54RA	4A-752A-43OS
	5/32	5A-752B-20	5A-752B-45	5A-751B-54RA	5A-752A-43OS
	3/16	6A-752B-20	6A-752B-45	6A-751B-54RA	6A-752A-43OS
	1/4	SMLS08-713-20	SMLS08-713-45		SMLS08-752A-43OS
2 ASP & ASP PF ASP FF & ASP F ASP-LC	13/64	ASP06-752B-20	ASP06-752B-45	ASP06-751B-54RA	ASP06-752A-43OS
	17/64	ASP08-752B-20	ASP08-752B-45	ASP08-751B-54RA	ASP08-752A-43OS
LGP LOCKBOLT LGPL2SC-V BACB30VM LGPL18SC-V BACB30XT LGPL4SC-V ABS0548 LGPL2SP-V BACB30VN LGPL4SP-V ASNA2392 LGPL8SC-V BACB30WD LGPL9SC-V BACB30WB LGPL9SP-V BACB30VY	5/32	LGP05-730B-10	LGP05-731-20		LGP05-204B-25OS LGP05-204B-30OS
		LGP05-731-45			LGP05-204B-34OS
	3/16	LGP06-730B-10	LGP06-731-20		LGP06-204B-25OS LGP06-204B-30OS
		LGP06-731-45			LGP06-204B-34OS
	1/4	LGP08-730B-10	LGP08-731-20		LGP08-204B-25OS LGP08-204B-30OS
		LGP08-731-45			LGP08-204B-34OS
NAS and GP SHEAR/TENSION LOCKBOLTS BACB30TY BACB30UA BACB30TZ BACB30UB BACB30DY BACB30GX BACB30DX BACB30GP BACB30GO BACB30GY BACB30GW	5/32	NASS05-730B-10	NAST05-730B-10		NASS05-204B-25OS NAST05-204B-20OS
		NASS05-731-20	NAST05-731-20		NASS05-204B-30OS NAST05-204B-30OS
	3/16	NASS05-731-45	NAST05-731-45		NASS05-204B-34OS NAST05-204B-34OS
		NAS06-730B-10	NAS06-731-20		NAS06-204B-25OS NAS06-204B-30OS
	1/4 ₃	NAS06-731-45			NAS06-204B-34OS
		NAS08-730B-10	NAS08-731-20		NAS08-204B-25OS NAS08-204B-30OS
		NAS08-731-45		NAS08-204B-34OS	
BACR15FR/FP, BACR15GF/GK, NAS1919 & NAS1921 "U" TYPE BLIND RIVET WITH DRIVE WASHER NAS9301-9312	1/8	456MAX-751A-21 ₂	456MAX-751A-61 ₂	456MAX-751C-54RA ₂	456MAX-752-42OS ₂
	5/32				
	3/16				
	1/4	08MAX-752B-20	08MAX-752B-45	08MAX-713-58RA	08MAX-204C-27OS 08MAX-204C-37OS
MS90353S & U & MS90354S & U MS21140S & U & MS21141S & U CR7000 SERIES BACB30YY, YU, & YT	5/32	SB05-752B-20	SB05-752B-45	SB05-751B-54RA	SB05-752A-43OS
		SB05-752B-80			
	3/16	SB06-752B-20	SB06-752B-45	SB06-751B-54RA	SB06-204C-27OS
		SB06-752B-80			
1/4	SB08-713-20	SB08-713-45	SB08-713-58RA	SB08-204C-27OS SB08-204C-37OS	
MS90353 & MS90354 MS21140 & MS21141 "U" TYPE BLIND BOLT WITH DRIVE WASHER	5/32	UBB05-752B-20	UBB05-752B-45	UBB05-751B-54RA	UBB05-752A-43OS
	3/16	UBB06-752B-20	UBB06-752B-45	UBB06-751B-54RA	UBB06-752A-43OS
1/4	UBB08-713-20	UBB08-713-45		UBB08-204C-27OS UBB08-204C-37OS	
EN6122 & UAB130-EU EN6127 & UAB6127-EU EN6128 & UAB100-EU EN6129 & UABP-EU	1/8	UAB04-752B-20	UAB04-752B-45	UAB04-751B-54RA	UAB04-752A-43OS
	5/32	UAB568-713-21 ₁	UAB568-713-61 ₁	UAB05-751B-54RA	UAB05-752A-43OS
	3/16			UAB06-751B-54RA	UAB06-752A-43OS
1/4				UAB08-204C-27OS UAB08-204C-37OS	
SINGLE ACTION BLIND RIVET NAS1919S & U NAS1921S & U	1/8	SMLS04-752B-20	SMLS04-752B-45	SMLS04-751B-54RA	SMLS04-752A-43OS
	5/32	SMLS05-752B-20	SMLS05-752B-45	SMLS05-751B-54RA	SMLS05-752A-43OS
	3/16	SMLS06-752B-20	SMLS06-752B-45	SMLS06-751B-54RA	SMLS06-752A-43OS
1/4	SMLS08-713-20	SMLS08-713-45	SMLS08-713-58RA	SMLS08-752A-43OS	

THE GAGE BILT GBP731 TOOL IS APPROVED TO INSTALL THE ABOVE FASTENERS.

*ALL RIGHT ANGLE NOSES REQUIRE 731154 STROKE LIMITER.
**ALL OFFSET 204 SERIES NOSES REQUIRE 751204 A DAPTER.
1) RIGHT ANGLE NOSE ASSEMBLIES MAY REQUIRE MORE THAN ONE PULL.
2) INSTALLS 1/8, 5/32 & 3/16 DIAMETERS.
3) NOT FOR TENSION ALLOY
4) INSTALLS 5/32, 3/16 & 1/4 DIAMETERS.

NOTE: THE LAST 2 DIGITS OF THE NOSE ASSEMBLY REPRESENTS THE LENGTH THE NOSE EXTENDS FROM THE TOOL. I.E. -20 = 2.0 INCHES

GAGE BILT ALSO SUPPLIES PIN & COLLAR SWAGE INSPECTION GAGES TO CERTIFY CORRECT SWAGE INSTALLATION.

