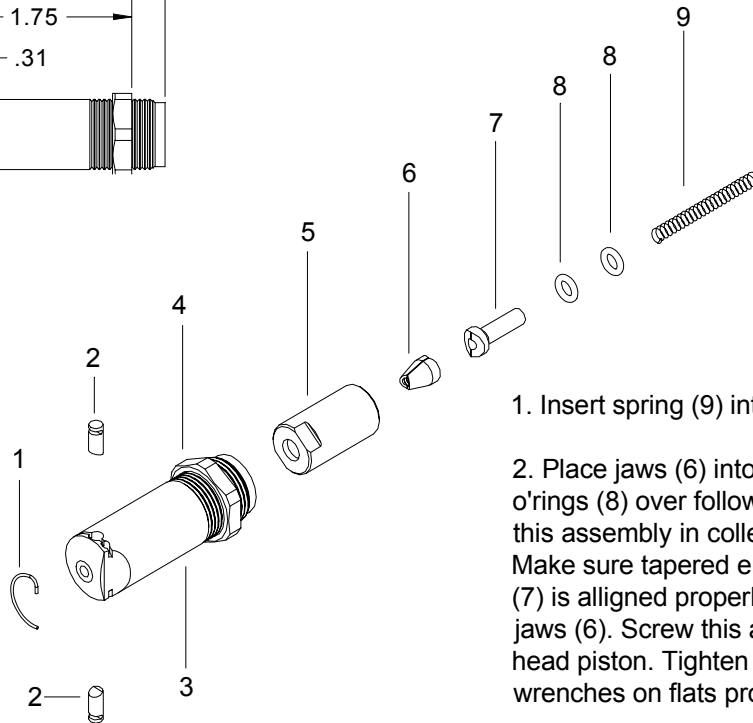
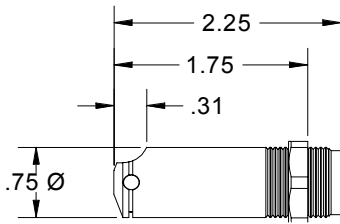


NOSE ASSEMBLY DATA SHEET



1. Insert spring (9) into head piston on tool.

2. Place jaws (6) into collet (5). Place o'rings (8) over follower (7) and place this assembly in collet against jaws. Make sure tapered end of jaw follower (7) is aligned properly in bevel in back of jaws (6). Screw this assembly onto end of head piston. Tighten securely, using wrenches on flats provided.

3. Thread outer sleeve (3), which contains jam nut (4), snugly into end of head cylinder. Tighten jam nut (4) securely.

KEEP NOSE ASSEMBLIES CLEAN

5/99

GAGE BILT

GAGE BILT PRODUCTS CORP.

14500 Barber Drive (586) 771-7664
 Warren, Mi 48088 (586) 771-2665 Fax
 e-mail:solutions@gagebilt.com / www.gagebilt.com

Type:	Fasteners:	Recommended Tool: GBP704B
Non Self-Releasing 1/8, 5/32 & 3/16 Ø	CHERRYMAX® BACR15FR & FF M7885 / NAS9300	

Ref. No.	Qty.	Description	456MAX-701-17
1	1	Retaining Ring	70101
2	2	Stem Stop	70102
3	1	Sleeve	70103
4	1	Jam Nut	70104
5	1	Collet	70105
6	1	Jaw Set (2 pcs.)	30513
7	1	Follower	40506
8	2	O'Ring	400774
9	1	Spring	70109

CHERRYMAX® is a registered trademark of Cherry Textron