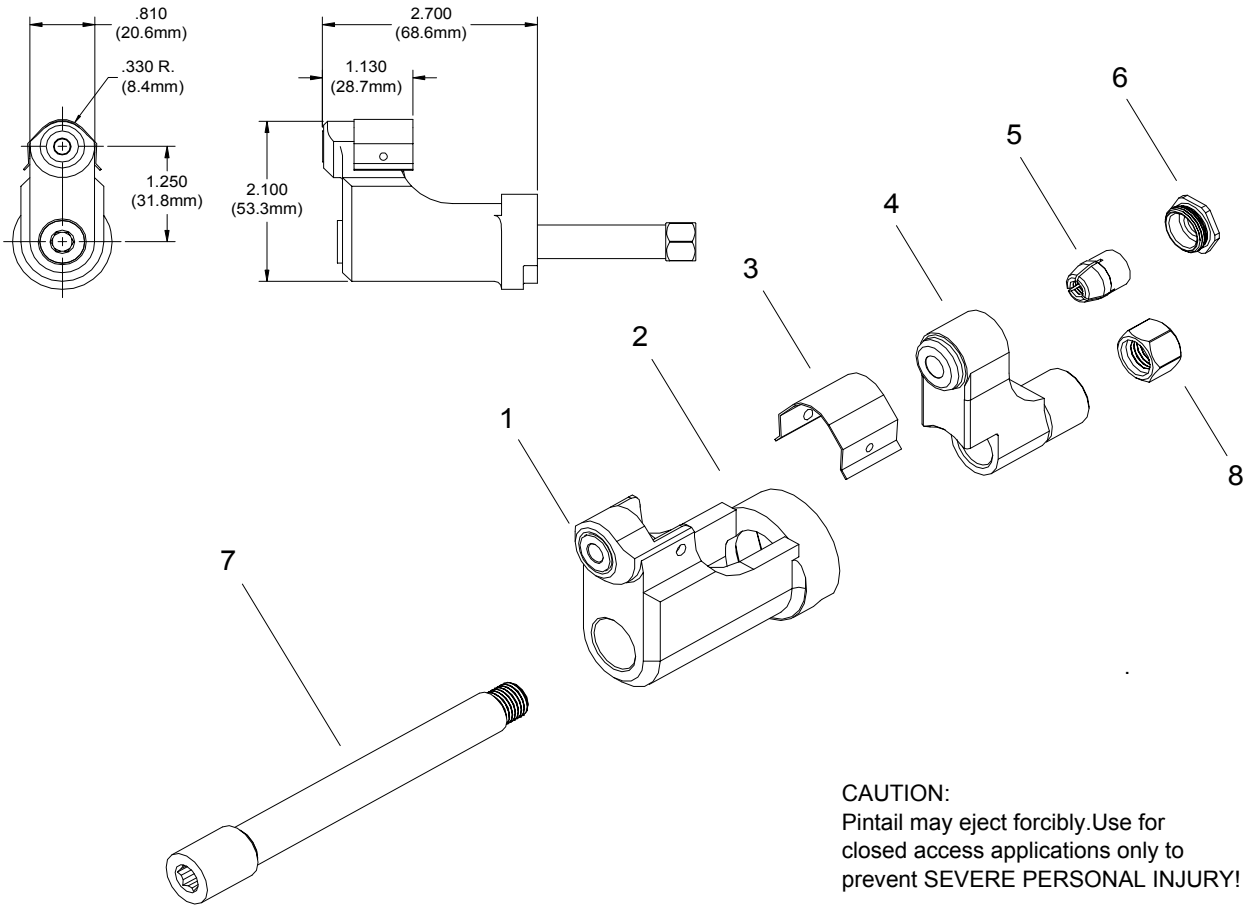


NOSE ASSEMBLY DATA SHEET



CAUTION:
Pintail may eject forcibly. Use for closed access applications only to prevent SEVERE PERSONAL INJURY!

ASSEMBLY INSTRUCTIONS:

On front of GBP204 installation tool remove screw and stop. With collet placed in housing, install on tool. Slide draw bar thru housing and collet. Using an allen wrench, Tighten the nut on the end of the draw bar (apply vibra-tite part no. 405124 to threads on draw bar). Replace screw and stop on tool.



8/05 Rev. 2/08
Covered Under Patent No. 5,371,933

*Use Adapter No. 751204.
**Use Adapter No. 353204.
***Use Adapter No.751204 with 713152 Stroke Limiter.

GAGE BILT
MADE IN U.S.A.

GAGE BILT PRODUCTS CORP.

14500 Barber Drive (586) 771-7664
Warren, Mi 48088 (586) 771-2665 Fax
e-mail:solutions@gagebilt.com / www.gagebilt.com

Type:		Fastener:	Recommended Tool GBP204 & GBP204A
Non Self-Releasing 1/4" Ø		CHERRYMAX® BACR15FR & FP M7885 / NAS9300	Alternate Tools: *GBP752E, **GBP745D & ***GBP713C
Ref. No.	Qty.	Description	08MAX-204C-27OS
1	1	Anvil-Driving	18837
2	1	Anvil & Holder Assembly (Inc. #1)	10989
3	1	Guard	60426
4	1	Collet	20722
5	1	Super-Grip Jaw Assembly	30864-S8
6	1	Cap	70647
7	1	Draw Bar	71116
8	1	Nut	71114