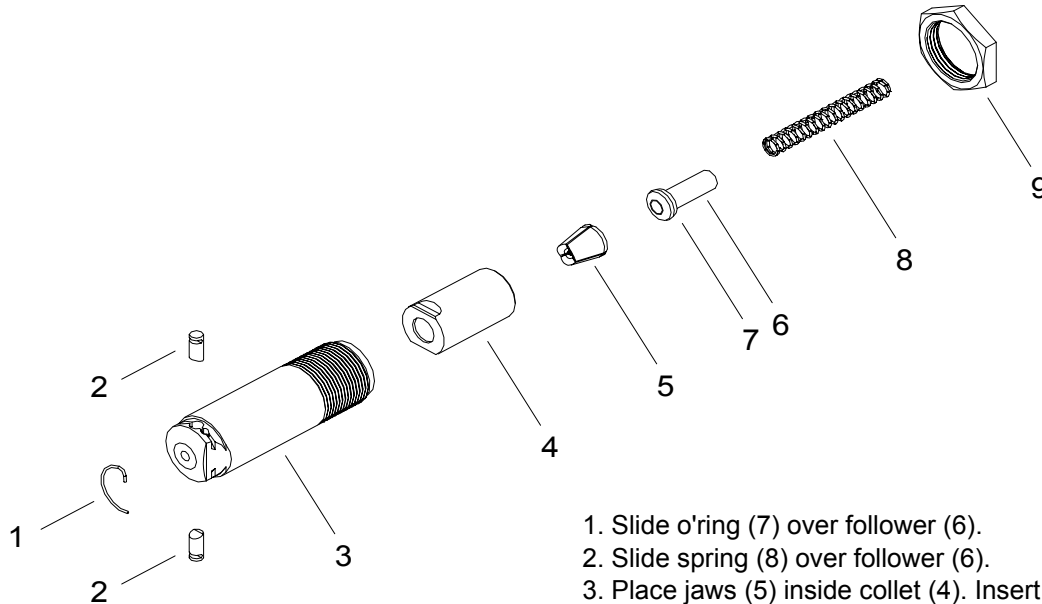
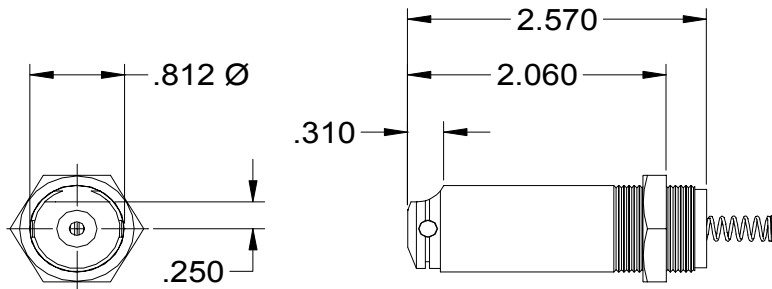


NOSE ASSEMBLY DATA SHEET



1. Slide o'ring (7) over follower (6).
2. Slide spring (8) over follower (6).
3. Place jaws (5) inside collet (4). Insert follower (6) inside collet (4) against jaws (5). Screw this assembly onto end of head piston. Tighten securely, using wrenches on flats provided.
4. Thread anvil (3), which contains jam nut (9) snugly into end of head cylinder. Tighten jam nut securely.

Rev. 3/03

GAGE BILT

GAGE BILT PRODUCTS CORP.

44766 Centre Court
Clinton Twp, MI 48038
e-mail:solutions@gagebilt.com / www.gagebilt.com

(586) 226-1500
(586) 226-1505 Fax

Type:		Fastener:		Recommended Tool: GBP744B
Non Self-Releasing 1/4" Ø		NAS9301-NAS9312 M7885 BACR15FP/FR BACR15GF/GK & NAS1900U SERIES		
Ref. No.	Qty.	Description		08MAX-744-20
1	1	Retaining Ring		70101
2	2	Stem Stop		70102
3	1	Anvil		10869
4	1	Collet		20842
5	1	Jaw Set		30824
7	1	Follower		40807
6	1	O'Ring		A-720
8	1	Spring		50806
9	1	Jam Nut		70821