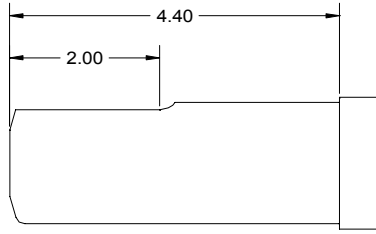
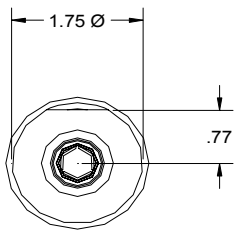
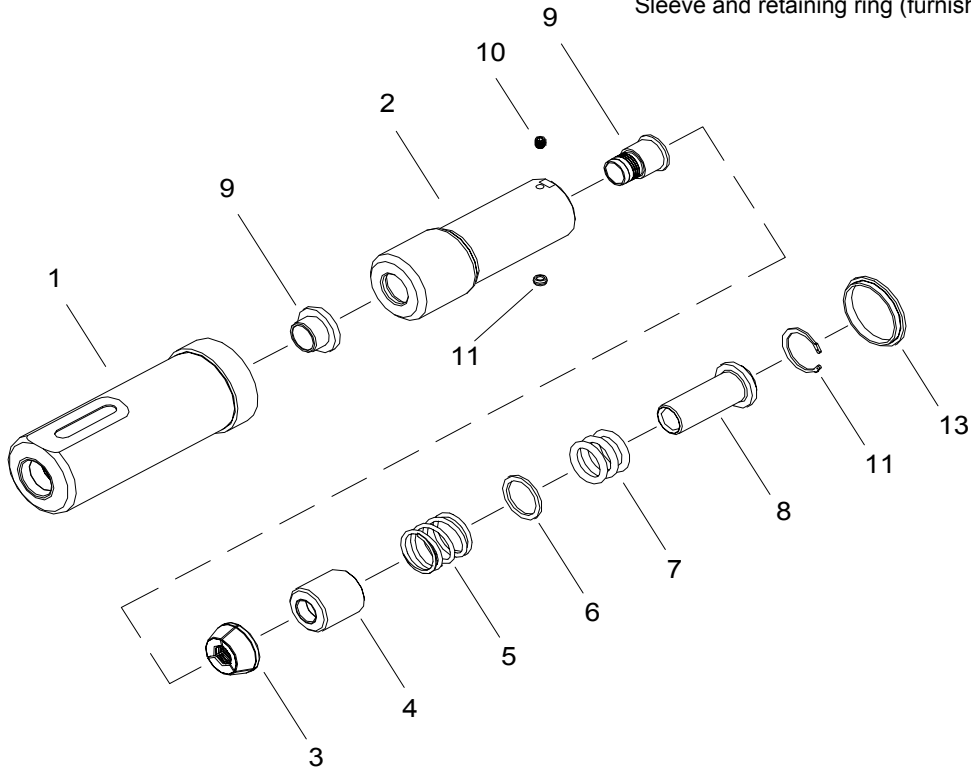


NOSE ASSEMBLY DATA SHEET



1. Ensure Piston is in full forward position.
2. Disconnect tool control cord.
3. Slide sleeve (13) over collet. Screw assembled collet onto piston until top of collet flat lines up with adapter face of tool.
4. If Collet Lock (11) is not in Piston groove, continue to turn 1/4 turn, or less until lock engages groove.
5. Tighten Set Screw (10).
6. Slide Anvil (1) over assembled Collet. Install Split Ring, Sleeve and retaining ring (furnished with tool).



Rev. 5/07

GAGE BILT

GAGE BILT PRODUCTS CORP.

14500 Barber Drive
Warren, Mi 48088

(586) 771-7664
(586) 771-2665 Fax

e-mail: solutions@gagebilt.com / www.gagebilt.com

Type:		Fastener:	Recommended Tool:
Self-Releasing 1/2" Ø		C50L	GBP5901
Ref. No.	Qty.	Description	16-5901A-41
1	1	Anvil Assembly	11601
2	1	Collet Assembly (Inc. 7, 8 & 9)	21600
3	1	Jaw Set	31601
4	1	Follower	41605
5	1	Spring	51601
6	1	Spacer	55016
7	3	O'Ring	406455
8	1	Sleeve	61609
9	1	Release & Ejector Kit	81600
10	1	Set Screw	51605
11	1	Ball Lock Assembly	54501
12	1	Retaining Ring	402259
13	1	Sleeve-Collet Lock	61602