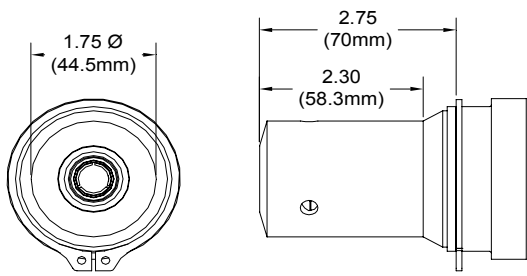
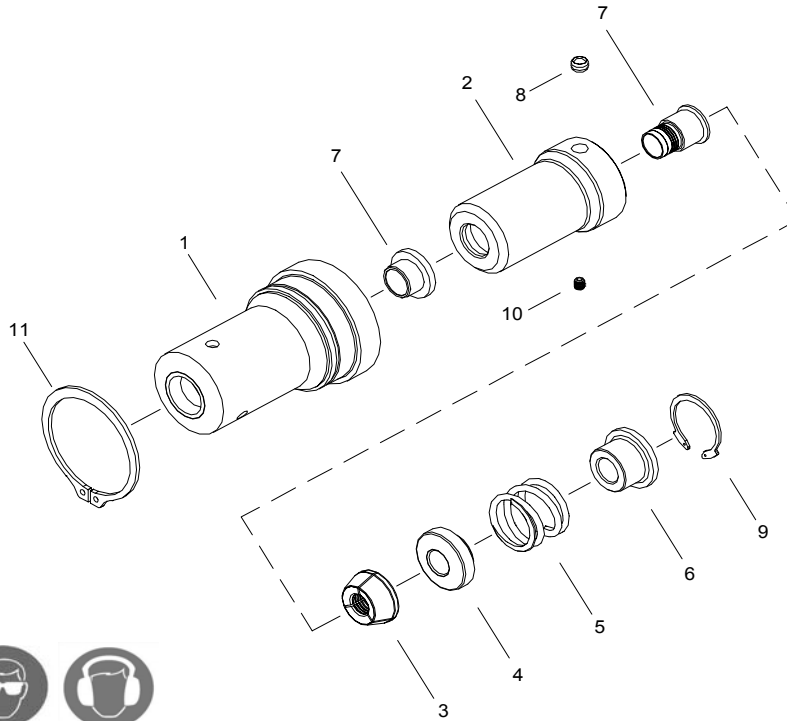


NOSE ASSEMBLY DATA SHEET



1. Ensure Piston is in full forward position.
2. Disconnect tool control cord.
3. Screw assembled Collet onto Piston until top of collet flat lines up with face of front gland on tool.
4. If Collet Lock (8) is not in Piston groove, continue to turn 1/4 turn, or less until lock engages groove.
5. Tighten Set Screw (11).
6. Slide Anvil (1) over assembled Collet. Install Split Ring, Sleeve (furnished with tool) and Retaining Ring (11).



1/08 Rev. 3/08

GAGE BILT PRODUCTS CORP.

GAGE BILT

14500 Barber Drive (586) 771-7664
 Warren, Mi 48088 (586) 771-2665 Fax
 e-mail:solutions@gagebilt.com / www.gagebilt.com

Type:		Fastener:	Recommended Tool:
Self-Releasing 1/2" Ø		C50L	GBP7624(A)
Ref. No.	Qty.	Description	16-7624-41
1	1	Anvil	11622
2	1	Collet Assembly (Inc. 7 & 8)	21246
3	1	Jaw Set	31601
4	1	Follower	41608
5	1	Spring	52001
6	1	Sleeve	61615
7	1	Release & Ejector Kit	81600
8	1	Ball Lock Assembly	54502
9	1	Retaining Ring	402263
10	1	Set Screw	A-280
11	1	Retaining Ring	401027