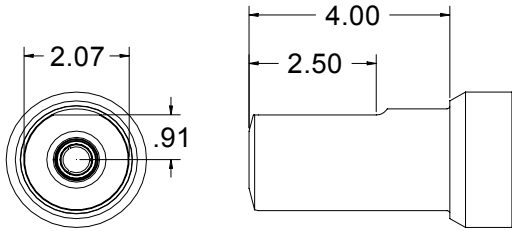
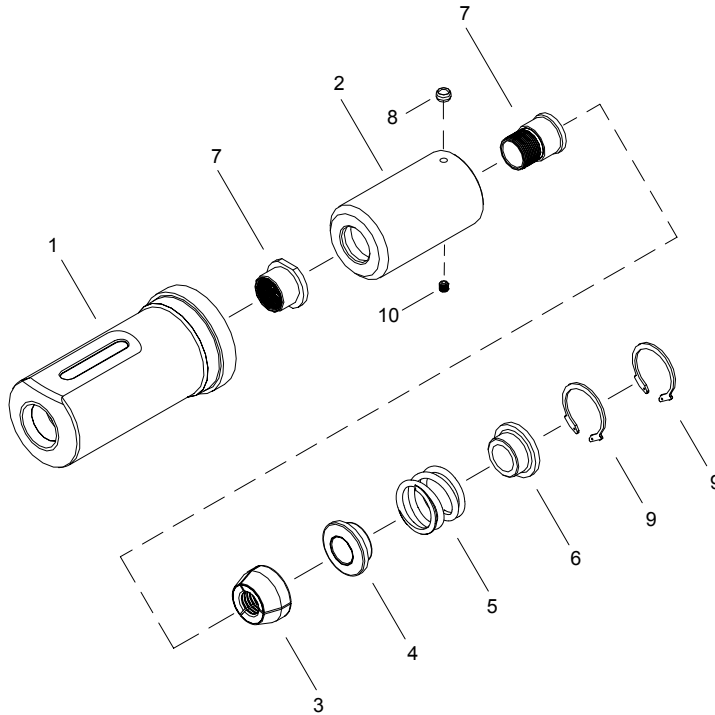


# NOSE ASSEMBLY DATA SHEET



## ASSEMBLY

1. Drop 62004 sleeve into tool adapter.
2. Hand screw collet onto piston until it stops.  
Screw by hand only!
3. Unscrew collet to align ball lock assembly with  
closest groove on piston. Screw in set screw.
4. Slide anvil over collet.
5. Slide nut over anvil and tighten.



11/96 Rev. 12/05

# GAGE BILT

## GAGE BILT PRODUCTS CORP.

14500 Barber Drive (586) 771-7664  
 Warren, Mi 48088 (586) 771-2665 Fax  
 e-mail:solutions@gagebilt.com / www.gagebilt.com

Type:		5/8" Fastener:	Recommended Tool:
Self-Releasing 5/8 Ø		C50L	GBP7500A
Ref. No.	Qty.	Description	20-7500-41
1	1	Anvil	12007
2	1	Collet Assy (Inc. #7 & #8)	22006
3	1	Jaw Set	32001
4	1	Follower	42006
5	1	Spring	52007
6	1	Sleeve	62010
7	1	Release & Ejector Kit	82000
8	1	Ball Lock Assembly	54502
9	2	Retaining Ring	402263
10	1	Set Screw	A-280