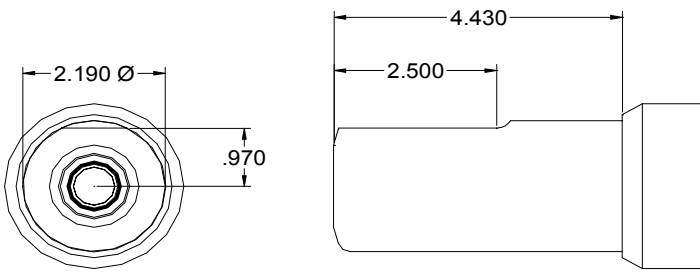
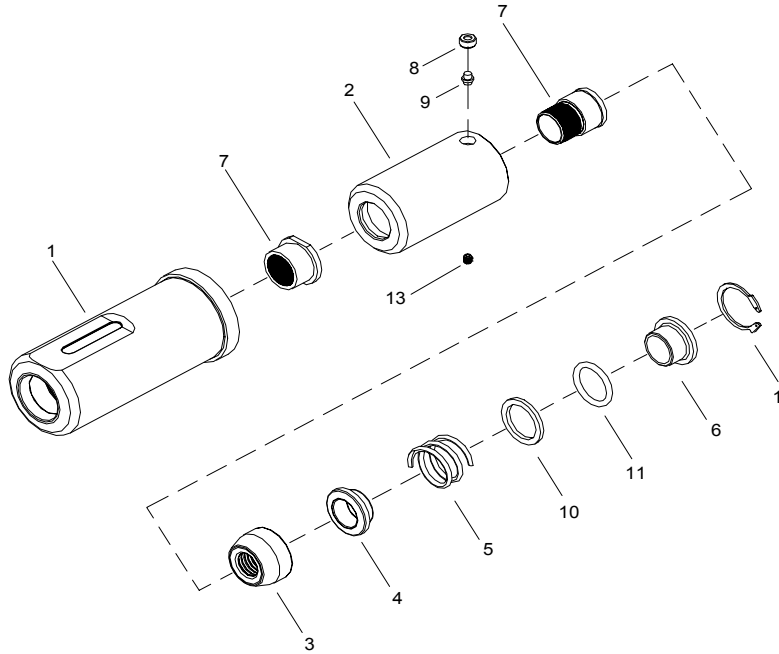


# NOSE ASSEMBLY DATA SHEET



1. Hand screw collet onto piston until it stops.  
Screw by hand only!
2. Unscrew collet to align pin-collet lock with  
closest groove on piston.
3. Tighten set screw.
4. Slide anvil over collet.
5. Slide nut over anvil and tighten.



Rev. 7/07

**CAUTION:** Remove 62004 sleeve from GBP7500A tool before attaching nose assembly

**GAGE BILT**  
MADE IN U.S.A.

**GAGE BILT PRODUCTS CORP.**  
14500 Barber Drive (586) 771-7664  
Warren, Mi 48088 (586) 771-2665 Fax  
e-mail:solutions@gagebilt.com / www.gagebilt.com

Type:		Fastener:	Recommended Tool:
Self-Releasing 3/4" Ø		C50L	GBP7500A
Ref. No.	Qty.	Description	24-7500-44
1	1	Anvil Assembly	12405
2	1	Collet Assembly (Inc. 7,8,9 & 13)	22407
3	1	Jaw Set	32401
4	1	Follower	42405
5	1	Spring	52007
6	1	Sleeve	62406
7	1	Release & Ejector Kit	82400
8	1	Retainer-Collet	54505
9	1	Pin-Collet Lock	54508
10	1	Spacer	55020
11	1	O'Ring	400846
12	1	Retaining Ring	402263
13	1	Set Screw	A-280