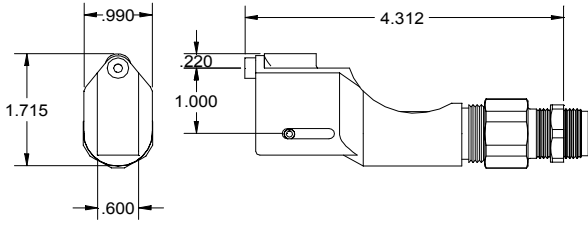


NOSE ASSEMBLY DATA SHEET



Screw drawbolt adapter (10) onto head piston of tool one to two turns. Screw frame adapter (11) into front of head cylinder until drawbolt saddle comes into contact with the front of the frame. When installing the nose assembly rivet pintail may be inserted into the nose assembly to insure proper adjustment. For optimal installation, pintail should be engaged when inserted into the nose. Rotate nose assembly to desired position and tighten jam nut (12) securely. With tool connected to air insert a pintail into the jaws to set position.

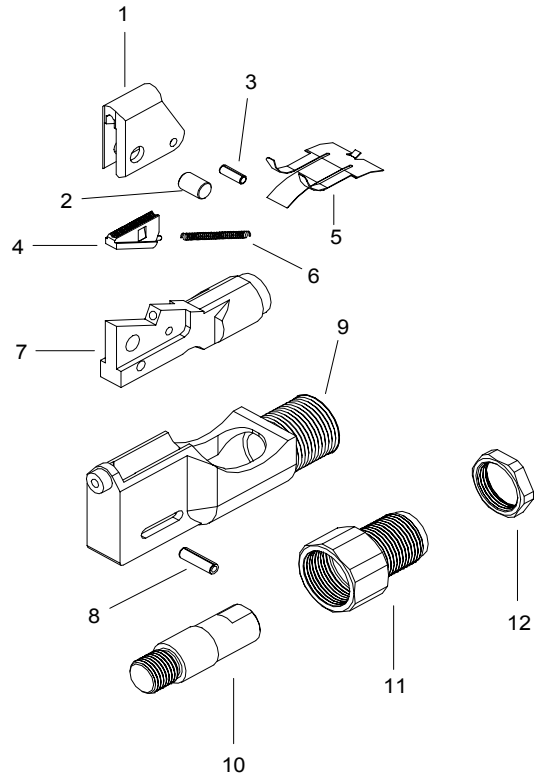
Disassembly:

Remove frame adapter (11) and jam nut (12) providing access to drawbolt adapter (10). Remove drawbolt adapter, use wrench to loosen. Remove guard (5) and roll pin (8) allowing drawbolt and jaw assembly to be lifted out of frame (9). Remove dowel pin (2) and roll pin (3) and dismantle jaw assembly.

Assembly:

Reverse procedure. Insert spring (6) and jaw (4) into drawbolt (7). Place saddle (1) onto drawbolt and install dowel (2) and roll pin (3). Place drawbolt and jaw subassembly into frame (9) and install roll pin (8) and guard (5).

Use loctite #242 or equivalent when assembling drawbolt adapter and drawbolt, and when assembling frame adapter to frame.



9/07

GAGE BILT
MADE IN U.S.A.

GAGE BILT PRODUCTS CORP.

14500 Barber Drive
Warren, Mi 48088

(586) 771-7664
(586) 771-2665 Fax

e-mail:solutions@gagebilt.com / www.gagebilt.com

Type:		Fasteners: Single Action Blind Rivet NAS1919U & NAS1921U NAS9301-NAS9312 M7885 BACRFP/FR & BACR15GJ/GK	Recommended Tool:
Non Self-Releasing 1/8", 5/32" & 3/16" Ø			
Ref. No.	Qty.	Description	456MAX-704-43OS
1	1	Drawbolt Saddle	78201
2	1	Dowel Pin	76302
3	1	Roll Pin	78103
4	1	Jaw	78104
5	1	Guard	76305
6	1	Spring	76306
7	1	Drawbolt	78207
8	1	Roll Pin	76308
9	1	Frame	76309
10	1	Drawbolt Adapter	78110
11	1	Frame Adapter	76311
12	1	Jam Nut	70104