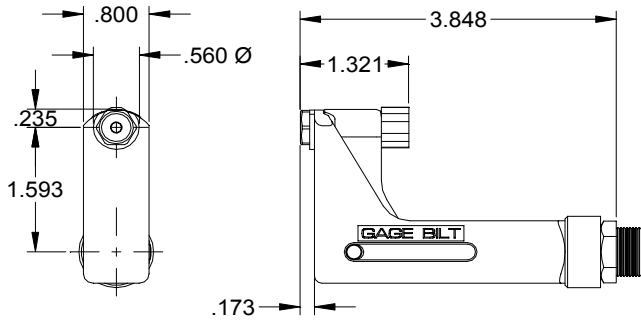
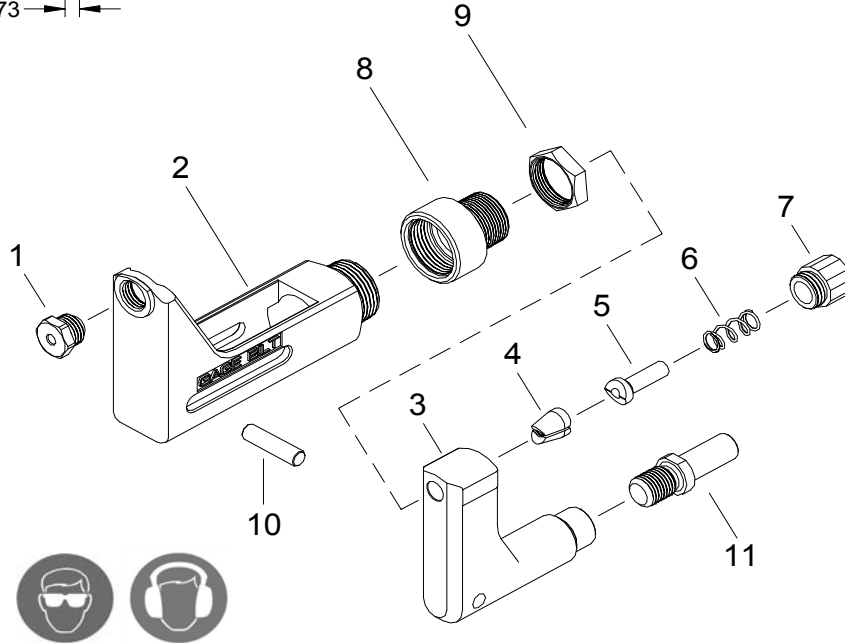


NOSE ASSEMBLY DATA SHEET



Attachment:

Screw nose assembly onto tool until it stops then back off until nose is in desired position. (Warning: do not back off nose assembly more than one complete turn). Lock jam nut (70336) against face of tool.



6/07

GAGE BILT
MADE IN U.S.A.

GAGE BILT PRODUCTS CORP.

14500 Barber Drive (586) 771-7664
Warren, Mi 48088 (586) 771-2665 Fax
e-mail:solutions@gagebilt.com / www.gagebilt.com

Type:		Fasteners:		Recommended Tool: GBP715C	
Self-Releasing 1/8", 5/32" & 3/16" Ø		NAS1919U & NAS1921U NAS9301-NAS9312 M7885 BACR15FP/FR BACR15GF/GK		Alternate Tools: GB51	
Ref. No.	Qty.	Description	456MAX-715A-400S		
1	1	Nose Tip	10167		
2	1	Anvil Holder	13368		
3	1	Collet	20914		
4	1	Jaw Set	30617		
5	1	Follower	40506		
6	1	Spring	50418		
7	1	Cap	60429		
8	1	Anvil Adapter	70334		
9	1	Jam Nut	70411		
10	1	Pin	70468		
11	1	Collet Adapter	70333		