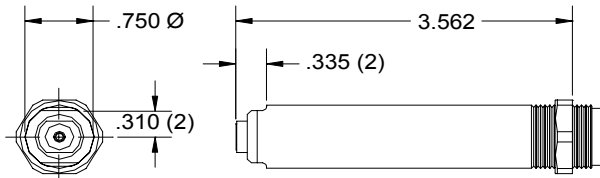
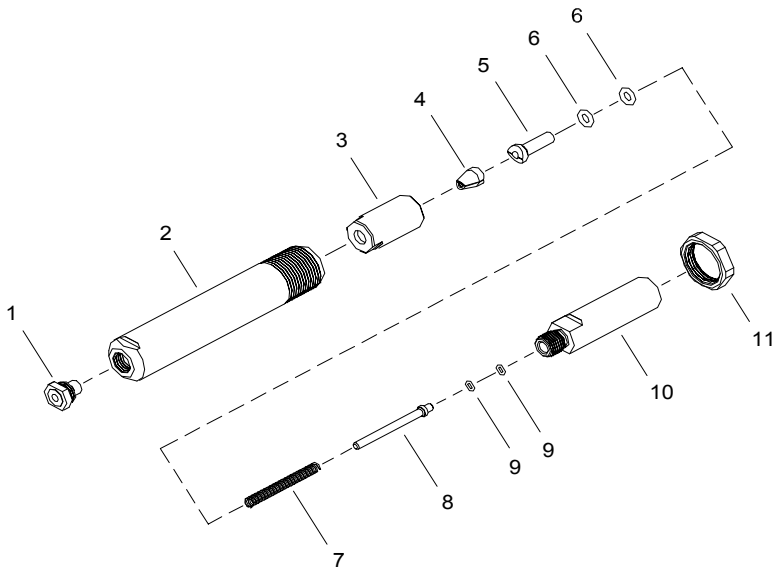


NOSE ASSEMBLY DATA SHEET



INSTALLING ON RIVETER

1. Slide o-rings (9) on short end of stem stop (8), slide spring (7) on long end and insert into collet bolt (11) short end first. Screw collet bolt onto end of head piston securely using wrench on flat provided.
2. Place jaws (4) inside collet (3). Place o-rings (6) over follower (5) and place this assembly in collet against jaws making sure tapered end on follower lines up with split line of jaws. Screw this assembly onto end of collet bolt. Tighten securely using wrenches on flats provided.
3. Thread anvil holder (2) with anvil (1) and jam nut (11) assembled, over collet assembly into end of head cylinder until snug. Tighten jam nut securely.



1/05 Rev. 8/06

GAGE BILT
MADE IN U.S.A.

GAGE BILT PRODUCTS CORP.

14500 Barber Drive

(586) 771-7664

Warren, Mi 48088

(586) 771-2665 Fax

e-mail:solutions@gagebilt.com / www.gagebilt.com

Type:		Fasteners: Single Action Blind Rivet NAS1919U & NAS1921U NAS9301-NAS9312 M7885 BACR15FP/FR & BACR15GF/GK	Recommended Tool:
Self-Releasing Front Ejecting 1/8", 5/32" & 3/16" Ø			
Ref. No.	Qty.	Description	456MAX-749-35
1	1	Anvil	10425
2	1	Anvil Holder	10342
3	1	Collet	70105-1
4	1	Chuck Jaws	30513
5	1	Follower	40506
6	2	O'Ring	400774
7	1	Spring	50508
8	1	Stem Stop	70414
9	2	O'Ring	A-1034
10	1	Collet Bolt	70413
11	1	Jam Nut	70104