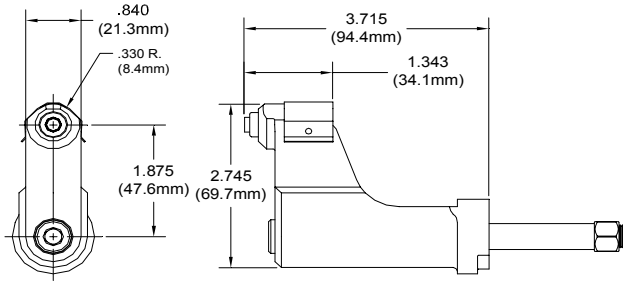
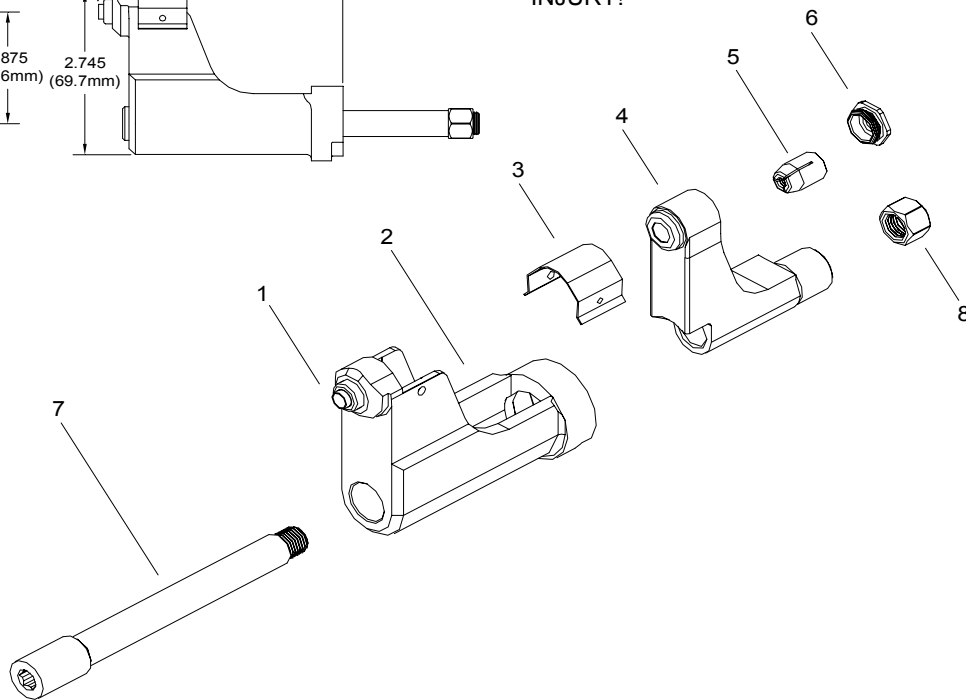


NOSE ASSEMBLY DATA SHEET



CAUTION:
pintail may eject forcibly. Use for closed access application only to prevent SEVERE PERSONAL INJURY!



ASSEMBLY INSTRUCTIONS:

On front of GBP204 Installation tool remove screw and stop. With Collet placed in Anvil, install on tool. Slide Draw Bar thru Anvil and Collet. Using an allen wrench, tighten the nut on the end of the Draw Bar (apply Vibra-Tite part no. 405124 to threads on Draw Bar). Replace screw and stop on tool.

*Use adapter No. 751204. GBP752B recommended for -6 and -8 only.

**Use Adapter No. 353204

***Use adapter No. 751204 with 713152 stroke limiter.

8/05

GAGE BILT

GAGE BILT PRODUCTS CORP.

14500 Barber Drive

(586) 771-7664

Warren, Mi 48088

(586) 771-2665 Fax

e-mail:solutions@gagebilt.com / www.gagebilt.com

Type:		Fastener:		Recommended Tool: GBP204	
Non Self-Releasing 13/64", 17/64" & 21/64" Ø		2 ASP, ASP PF, ASP FF ASP F & ASP LC		Alternate Tools: *GBP752E, **GBP745D & ***GBP713C	
Ref. No.	Qty.	Description	*ASP06- 204C-370S	*ASP08- 204C-370S	ASP10- 204C-370S
1	1	Cap Assembly	10142	10143	10174
2	1	Anvil Assembly	19990	19991	19994
3	1	Guard	60426	60426	60426
4	1	Collet	20723	20723	20723
5	1	Super-Grip Jaw Assembly	30656-S4	30864-S6	30863-S2
6	1	Cap	70647	70647	70647
7	1	Draw Bar	71117	71117	71117
8	1	Nut	71114	71114	71114