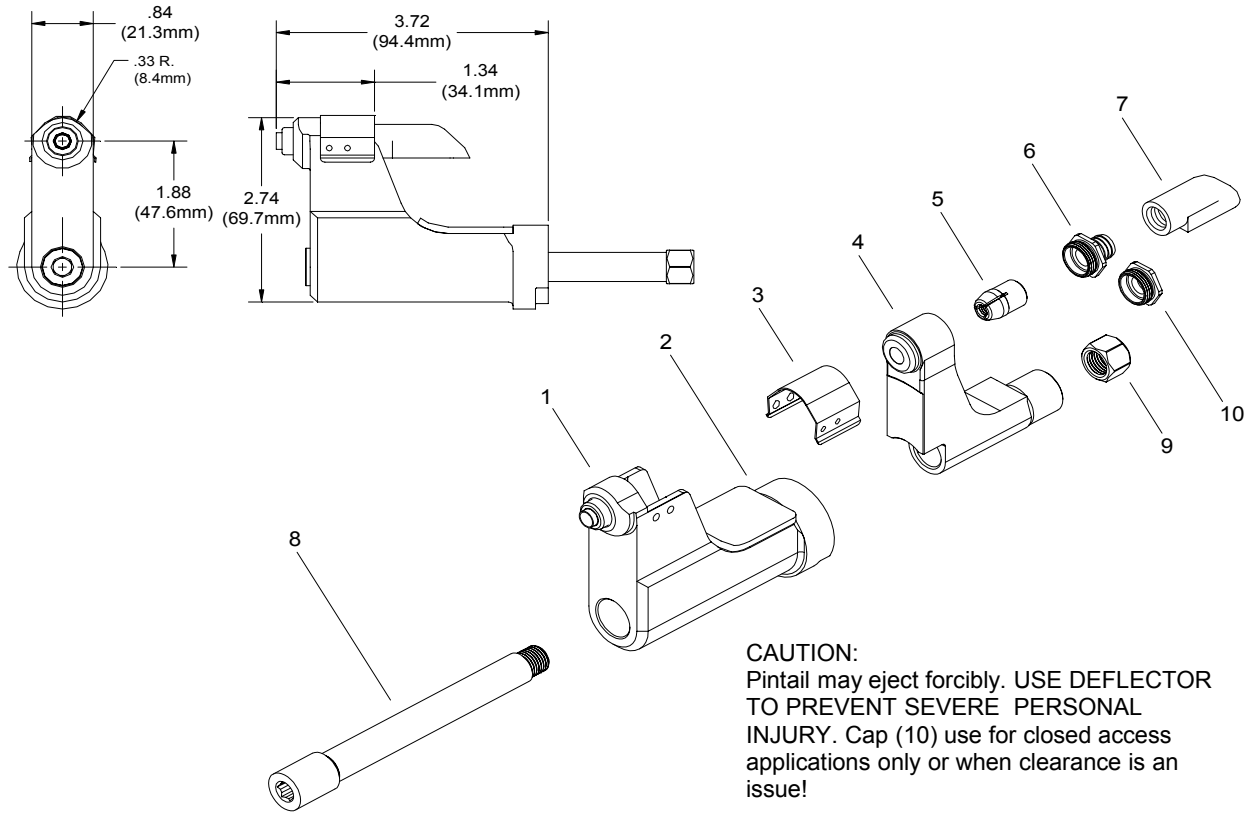


NOSE ASSEMBLY DATA SHEET



CAUTION:
 Pintail may eject forcibly. USE DEFLECTOR TO PREVENT SEVERE PERSONAL INJURY. Cap (10) use for closed access applications only or when clearance is an issue!

ASSEMBLY INSTRUCTIONS:

On front of GB204 Installation tool remove screw and stop. With Collet placed in Anvil, install on tool. Slide Draw Bar thru Anvil and Collet. Using an allen wrench, tighten the nut on the end of the Draw Bar (apply Vibra-TITE® part no. 405124 to threads on Draw Bar). Replace screw and stop on tool.



*Use adapter No. 751204. GB752 recommended for -6 and -8 only.

**Use Adapter No. 353204.

1/11

GAGE BILT
 MADE IN U.S.A.

GAGE BILT Inc.

44766 Centre Court (586) 226-1500
 Clinton Twp., MI 48038 (586) 226-1505 Fax
 e-mail:solutions@gagebilt.com / www.gagebilt.com

Type:		Fastener:		Recommended Tool:	
Non Self-Releasing 13/64", 17/64" & 21/64" Ø		2 ASP®, ASP PF, ASP FF ASP F & ASP LC		GB204A	
				Alternate Tools: *GB752, **GB745 & *GB722	
Ref. No.	Qty.	Description	*ASP06-204D-370S	*ASP08-204D-370S	ASP10-204D-370S
1	1	Cap Assembly	10142	10143	10174
2	1	Anvil Assembly	19990	19991	19994
3	1	Guard	60426	60426	60426
4	1	Collet	20723	20723	20723
5	1	Super-Grip Jaw Assembly	30656-S9	30864-S12	30863-S4
6	1	Barbed Retainer	70569	70569	70569
7	1	Deflector	61107	61107	61107
8	1	Draw Bar	71117	71117	71117
9	1	Nut	71114	71114	71114
10	1	Cap	70571	70571	70571