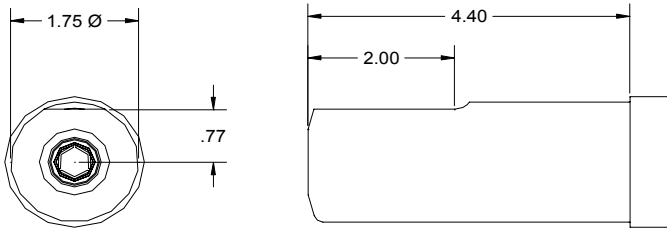
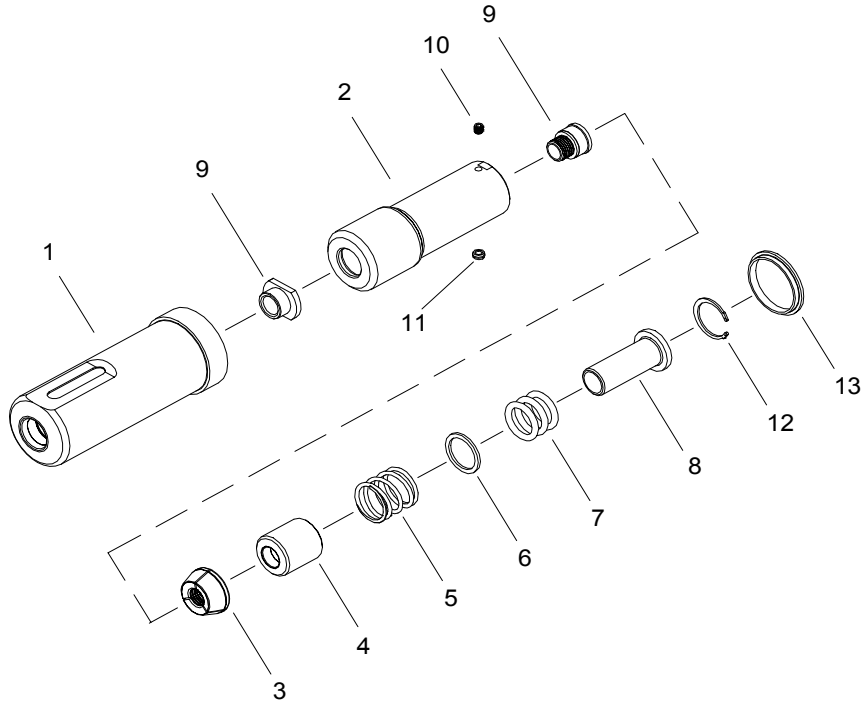


# NOSE ASSEMBLY DATA SHEET



1. Ensure Piston is in full forward position.
2. Disconnect tool control cord.
3. Slide sleeve (13) over collet. Screw assembled collet onto piston until top of collet flat lines up with adapter face of tool.
4. If Collet Lock (11) is not in Piston groove, continue to turn 1/4 turn, or less until lock engages groove.
5. Tighten Set Screw (10).
6. Slide Anvil (1) over assembled Collet. Install Split Ring, Sleeve and retaining ring (furnished with tool).



2/05 Rev. 5/07

**GAGE BILT**  
MADE IN U.S.A.

**GAGE BILT Inc.**

44766 Centre Court (586) 226-1500  
Clinton Twp. MI 48038 (586) 226-1505 Fax  
e-mail:solutions@gagebilt.com / www.gagebilt.com

Type:		Fastener:	Recommended Tool:
Self-Releasing 1/2" Ø		BOM®	HUCK® 2620
Ref. No.	Qty.	Description	<b>BOM16-504A-41</b>
1	1	Anvil Assembly	11603
2	1	Collet Assembly (Inc. 9,10 & 11)	21696
3	1	Jaw Set	31604
4	1	Follower	41605
5	1	Spring	51601
6	1	Spacer	55016
7	3	O'Ring	406455
8	1	Sleeve	61613
9	1	Release & Ejector Kit	81696-1
10	1	Set Screw	51605
11	1	Ball Lock Assembly	54501
12	1	Retaining Ring	402259
13	1	Sleeve-Collet Lock	61602