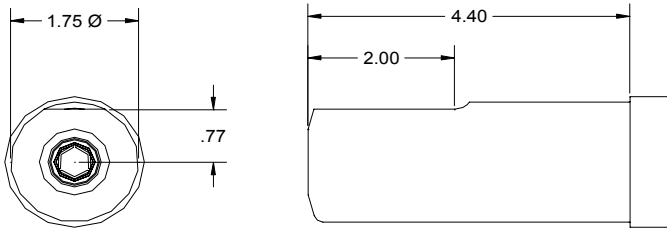
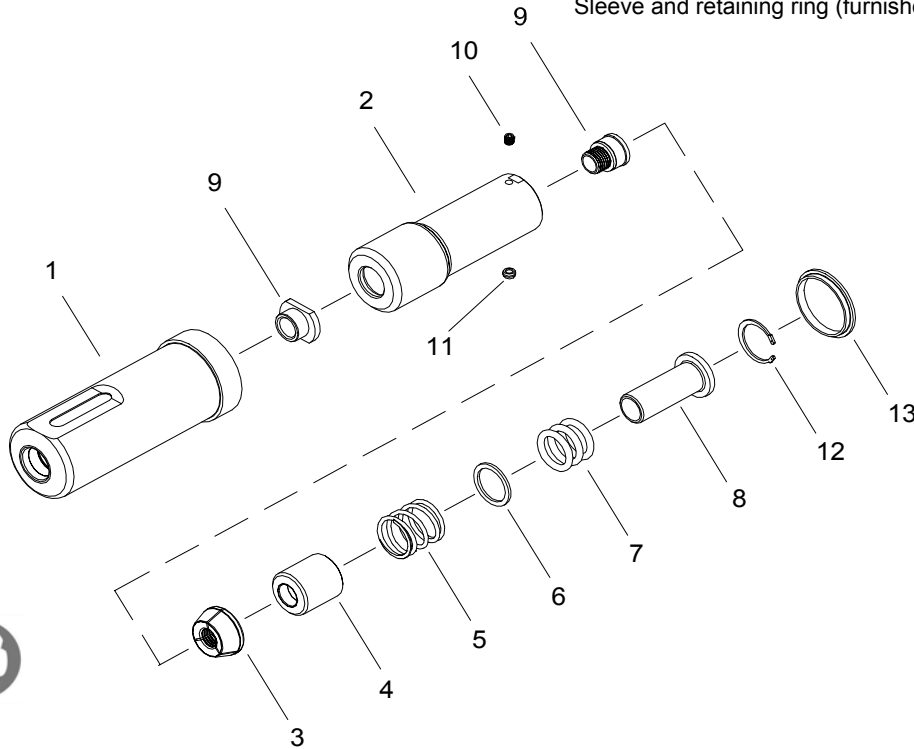


# NOSE ASSEMBLY DATA SHEET



1. Ensure Piston is in full forward position.
2. Disconnect tool control cord.
3. Slide sleeve (13) over collet. Screw assembled collet onto piston until top of collet flat lines up with adapter face of tool.
4. If Collet Lock (11) is not in Piston groove, continue to turn 1/4 turn, or less until lock engages groove.
5. Tighten Set Screw (10).
6. Slide Anvil (1) over assembled Collet. Install Split Ring, Sleeve and retaining ring (furnished with tool).



2/05 Rev. 5/07

**GAGE BILT**  
MADE IN U.S.A.

**GAGE BILT Inc.**

44766 Centre Court (586) 226-1500  
Clinton Twp. MI 48038 (586) 226-1505 Fax  
e-mail:solutions@gagebilt.com / www.gagebilt.com

Type:		Fastener:		Recommended Tool:	
Self-Releasing 1/2" Ø		BOM®		HUCK® 2620PT	
Ref. No.	Qty.	Description		<b>BOM16-5901A-41</b>	
1	1	Anvil Assembly		11603	
2	1	Collet Assembly (Inc. 9,10 & 11)		21696	
3	1	Jaw Set		31604	
4	1	Follower		41605	
5	1	Spring		51601	
6	1	Spacer		55016	
7	3	O'Ring		406455	
8	1	Sleeve		61613	
9	1	Release & Ejector Kit		81696-1	
10	1	Set Screw		51605	
11	1	Ball Lock Assembly		54501	
12	1	Retaining Ring		402259	
13	1	Sleeve-Collet Lock		61602	