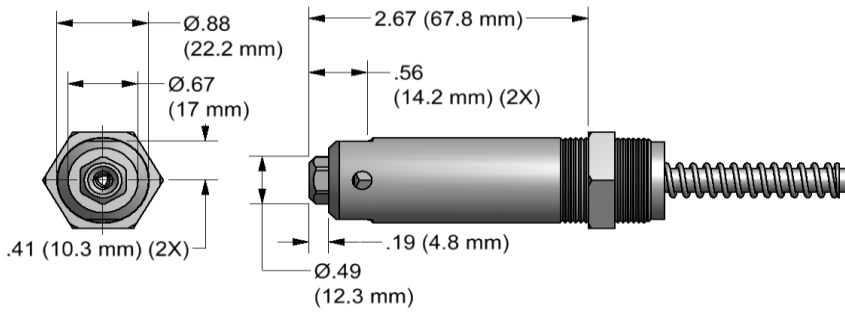


# NOSE ASSEMBLY DATA SHEET



## ASSEMBLY:

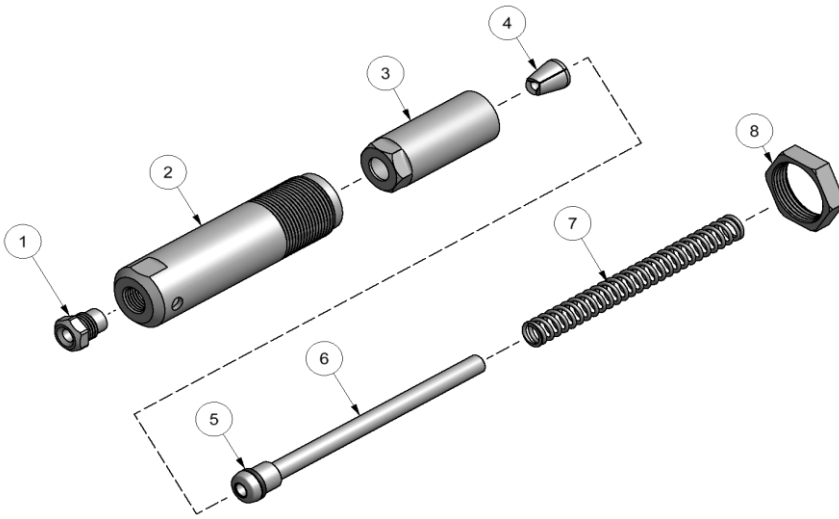
### Notes:

- A. Apply Vibra-tite® p/n/ 405125 to all threads and allow it to set 20 minutes prior to assembly.
- B. If nose assy is assembled as it is when purchased new, follow steps 3-5 to attach to tool.

1. Insert jaw set (4) into rear of collet (3).
2. Slide o-ring (5) over follower and flush against face as shown then slide follower (6) tube thru spring (7) i.d.
3. Place assembled parts into piston i.d. of tool then place collet (3), with assembled jaw set (4), over spring (6) and follower (7) and thread collet (3) onto piston of tool.
4. Slide anvil holder (2), with jam nut (8) attached, over collet (3) then thread anvil holder (2) into head cylinder until it stops.
5. Tighten jam nut (8) against face of tool.

## DISASSEMBLY:

Reverse assembly instructions.



9/08 REV 6/22



# GAGE BILT

MADE in USA

44766 Centre Court Clinton Twp. MI 48038 USA  
 Ph: +1 (586) 226-1500 Fax: +1 (586) 226-1505  
 solutions@gagebilt.com / www.gagebilt.com

Type:		Fasteners:	Recommended Tool:
Self-Releasing 9/32"		BULB-TITE® (STRUCTURAL)	GB734
			Alternate Tool: GB743
Ref. No.	Qty.	Description	BT09-743-24
1	1	Nose Tip	10289
2	1	Anvil Holder	10951-2
3	1	Collet	20867
4	1	Jaw Set	30824
5	1	O'Ring	400777
6	1	Follower	40901
7	1	Spring	50626
8	1	Jam Nut	70820