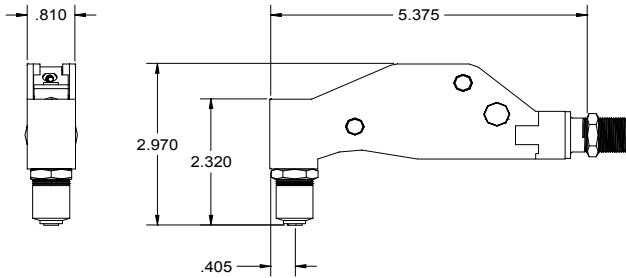


NOSE ASSEMBLY DATA SHEET



CAUTION!

Pintails may eject forcibly. This nose is for closed access applications. If used in open access applications, 704214 catcher bag is recommended TO PREVENT SEVERE PERSONAL INJURY, 704214 catcher bag is recommended.

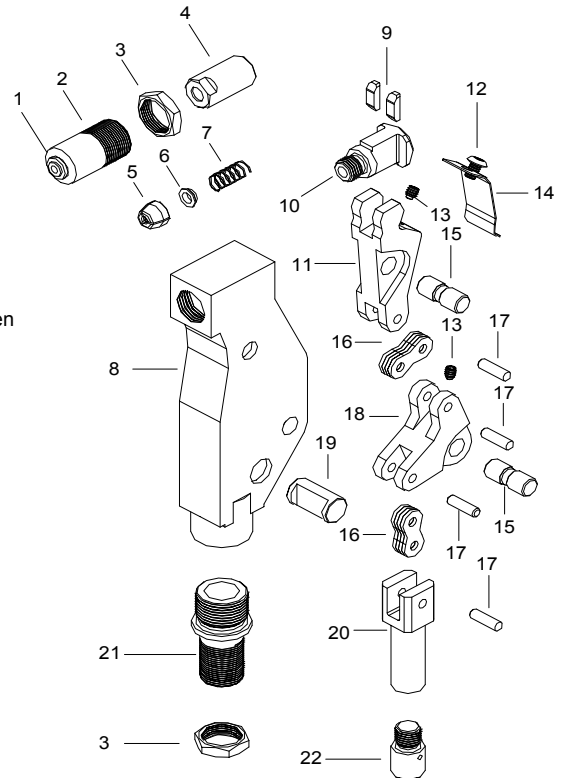
Nose Assembly	Nose Tip	Jaw Set
4C-715-54RA	10477	30425
5C-715-54RA	15584	30545
6C-715-54RA	16698	30656

*MOST FASTENERS REQUIRE MORE THAN ONE PULL.



4/06

GAGE BILT
MADE IN U.S.A.
GAGE BILT PRODUCTS CORP.
14500 Barber Drive (586) 771-7664
Warren, Mi 48088 (586) 771-2665 Fax
e-mail:solutions@gagebilt.com / www.gagebilt.com



ATTACHMENT:

Engage 1 or 2 threads of drawbolt (20) onto head piston, then insert adapter fitting (21) into end of head cylinder and turn clockwise until snug. Rotate nose assembly to desired position and tighten jam nut (3) securely.

After attaching the nose assembly to the riveter, adjust sleeve (2) by loosening jam nut (3), then insert largest diameter rivet to be installed in sleeve and rotate sleeve until jaws just grab pintail. Tighten jam nut (3) securely. By this sleeve adjustment, the nose assembly can be made to release or to hold the pintail after installation.

DISASSEMBLY:

Loosen jam nut (3) and remove sleeve (2). Unscrew collet (4) which contains jaws (5), follower (6), spring (7) from collet bolt (10).

Remove screw (12) and guard (14). Remove 2 set screws (13) and push out 2 pivot pins (15) to permit removal of linkage. Shoe bearings (9) and collet bolt (10) will disengage from lever (11).

Remove 4 link pins (17) to disassemble lever (11), links (16), bell crank (18) and drawbolt (20).

Remove guide pin (19) from frame (8). Adapter fitting (21) is secured to frame with loctite and need not be removed unless damaged.

REASSEMBLY:

Reverse the procedure. Linkage, consisting of lever (11), links (16), bell crank (18) and drawbolt (20) should be assembled as a subassembly before inserting lever (11) into shoe bearings (9) and collet bolt (10). **MAKE SURE NOTCHES ON COLLET BOLT (10) ARE POINTING TOWARDS LEVER (11).** This complete subassembly may then be inserted into frame (8) and retained by guide pin (19) and pivot pins (15).

Type:	Fasteners:	Recommended Tool: GBP715C
Single Action 1/8", 5/32" & 3/16" Ø	MS20600, Cherry 9000 Huck PT, SP & MS RV200 & RV500	

Ref. No.	Qty.	Description	Part Number
1	1	Nose Tip	See Chart
2	1	Sleeve	10115
3	2	Jam Nut	70411
4	1	Collet	20563
5	1	Jaw Set	See Chart
6	1	Follower	40301
7	1	Spring	50311
8	1	Frame	75310
9	2	Shoe Bearing	75311
10	1	Collet Bolt	70443
11	1	Lever	75313
12	1	But. Hd Screw	402471
13	2	Set Screw	75315
14	1	Guard	75316
15	2	Pivot Pin	75317
16	8	Link	75318
17	4	Link Pin	75319
18	1	Bell Crank	75320
19	1	Guide Pin	75321
20	1	Drawbolt	75322
21	1	Adapter-Frame	70458
22	1	Collet Extension	70457