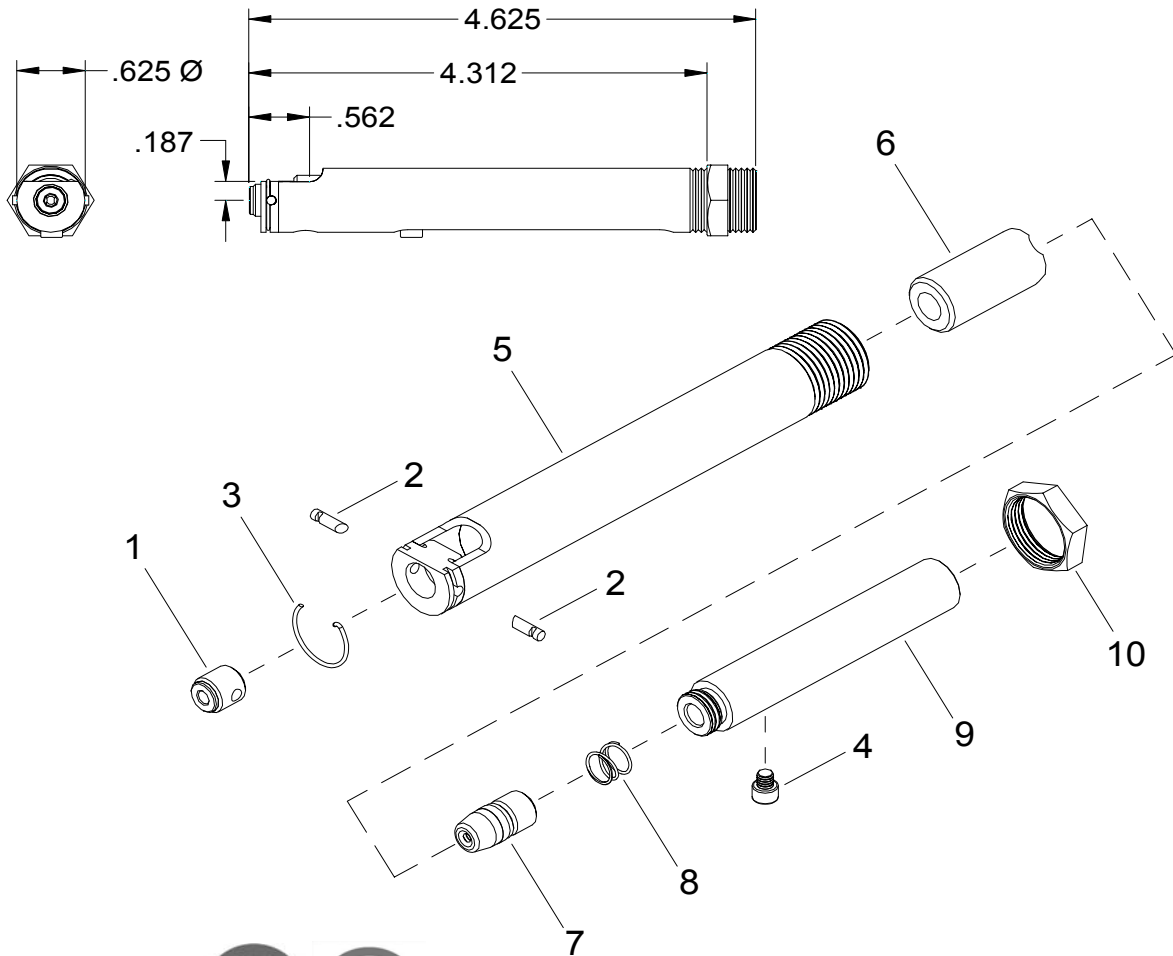


NOSE ASSEMBLY DATA SHEET



7/07 Rev. 10/07

Covered under Patent No. 5,029,881

*Requires 730715 adapter.

**These tools for 3/16" Ø Self-Plugging aluminum maximum.

GAGE BILT
MADE IN U.S.A.

GAGE BILT PRODUCTS CORP.

14500 Barber Drive
Warren, Mi 48088
e-mail:solutions@gagebilt.com / www.gagebilt.com

(586) 771-7664
(586) 771-2665 Fax

Type:
Single Action

3/32", 1/8", 5/32" & 3/16" Ø

Fasteners:
NUT PLATE RIVETS
MS20600 SERIES
CCR224/264/274
MS/9SP/PT
BACR15CC/CF/DA/DR

Recommended Tool:
**GBP715C

Alternate Tools:
**GB51 & *GBP752E

Ref. No.	Qty.	Description	3C-	4C-	5C-	6C-
			715B-43	715B-43	715B-43	715B-43
1	1	Anvil Insert	10383	10384	10385	10386
2	2	Ratchet Pin	15504	15503	15501	15502
3	1	Ratchet Pin Spring	50302	50302	50302	50302
4	1	Screw	70303	70303	70303	70303
5	1	Anvil Holder	10301	10301	10301	10301
6	1	Collet	20301	20301	20301	20301
7	1	Maxi-Jaw Assy	30301-M5	30406-M8	30511-M9	30610-M9
8	1	Spring	50306	50306	50306	50306
9	1	Drawbolt	70301	70301	70301	70301
10	1	Locknut	70411	70411	70411	70411