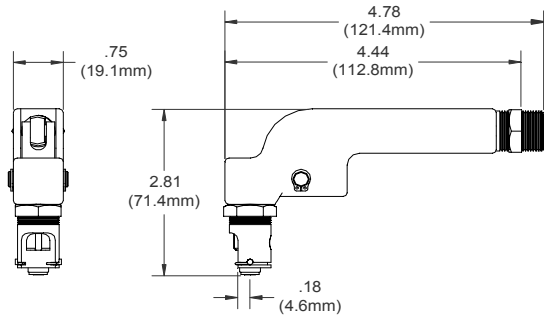
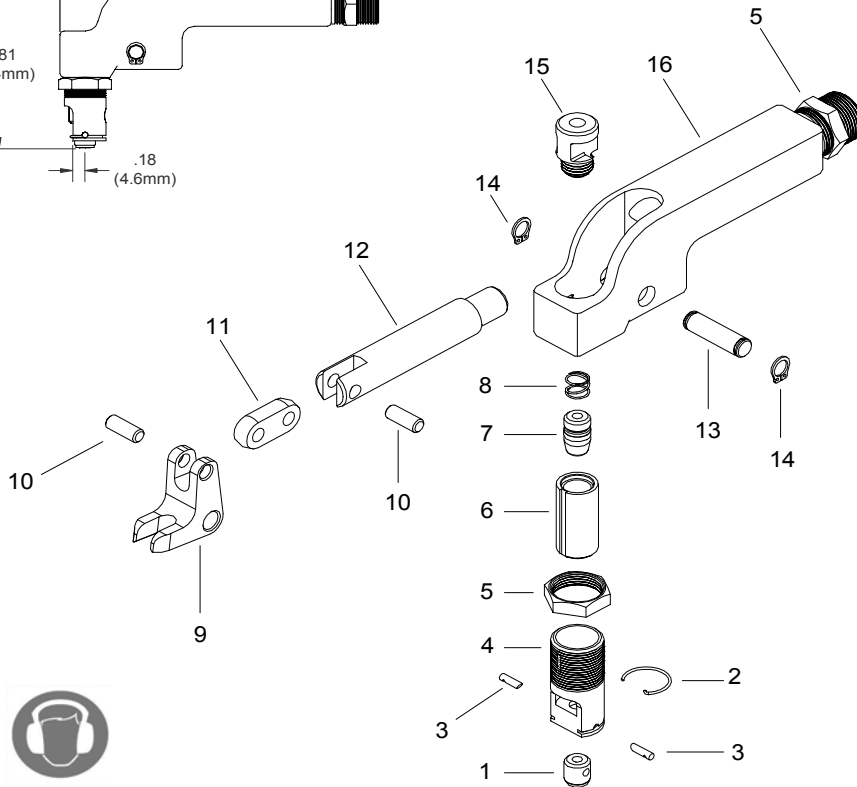


# NOSE ASSEMBLY DATA SHEET



**CAUTION:**  
Pintail may eject forcibly. Use for closed access applications only to prevent SEVERE PERSONAL INJURY!!



8/06 Rev. 8/07  
Covered Under Patent No. 5,029,881

\*Use Adapter No. 730715  
\*\*Use 3/16  $\varnothing$  Self-Plugging aluminum maximum

**GAGE BILT**  
MADE IN U.S.A.

**GAGE BILT PRODUCTS CORP.**

14500 Barber Drive (586) 771-7664  
Warren, Mi 48088 (586) 771-2665 Fax  
e-mail:solutions@gagebilt.com / www.gagebilt.com

Type: Single Action Non Self-Releasing		Fastener: MS20600, CHERRY 9000 HUCK PT, SP & MS OLYMPIC RV200 & RV500	Recommended Tool: **GBP715C			
3/32, 1/8, 5/32 & 3/16 $\varnothing$			Alternate Tools: **GB51 & *GBP752E			
Ref. No.	Qty.	Description	3C- 715B-44RA	4C- 715B-44RA	5C- 715B-44RA	6C- 715B-44RA
1	1	Insert	10383	10384	10385	10386
2	1	Spring-Ratchet Pin	50302	50302	50302	50302
3	2	Pin-Ratchet	15504	15503	15501	15502
4	1	Housing-Nose	10335	10335	10335	10335
5	2	Locknut	70411	70411	70411	70411
6	1	Collet	20401	20401	20401	20401
7	1	Maxi-Jaw Assembly	30301-M4	30406-M7	30511-M8	30610-M8
8	1	Spring	50306	50306	50306	50306
9	1	Pivot	70304	70304	70304	70304
10	2	Link Pin	70305	70305	70305	70305
11	1	Link Pin	70306	70306	70306	70306
12	1	Drawbolt	70307	70307	70307	70307
13	1	Pivot Pin	70308	70308	70308	70308
14	2	Retaining Ring	400987	400987	400987	400987
15	1	Closier Cap	70309	70309	70309	70309
16	1	Housing	10338	10338	10338	10338