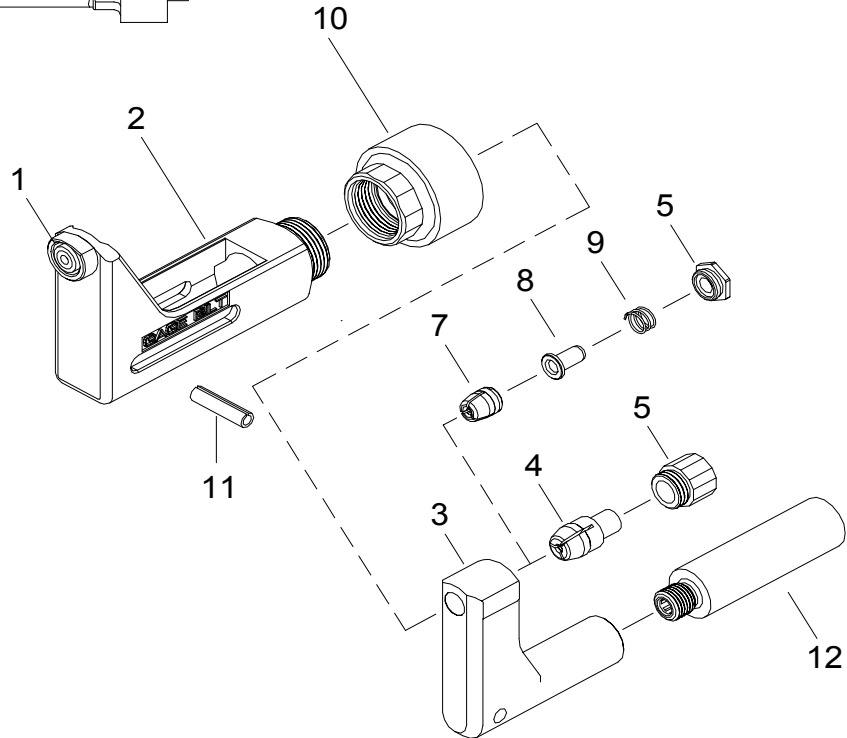
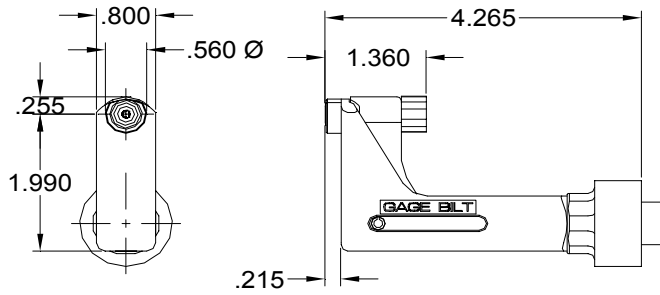


# NOSE ASSEMBLY DATA SHEET



Rev. 8/05

## GAGE BILT

### GAGE BILT PRODUCTS CORP.

14500 Barber Drive  
Warren, Mi 48088

(586) 771-7664

(586) 771-2665 Fax

e-mail:solutions@gagebilt.com / www.gagebilt.com

Type:		Fasteners:				Recommended Tool: GBP751C	
Non Self-Releasing 3/32", 1/8", 5/32" & 3/16" Ø		MS20600, Cherry 9000 Huck PT, SP & MS RV200 & RV500				Alternate Tools: GBP752E, GBP713C & GBP2400B	
Ref. No.	Qty.	Description	3C- 751-430S	4C- 751-430S	5C- 751-430S	6C- 751-430S	
1	1	Anvil Insert	13395	10477	15584	16698	
2	1	Anvil & Holder Assembly (Inc. #1)	13373	13370	13371	13372	
3	1	Collet	20909	20910	20910	20910	
4	1	Super-Grip Jaw Assembly	----	30425-S2	30545-S4	30656-S3	
5	1	Cap	60301	60429	60429	60429	
6	1	Chuck Jaw Assembly (Inc. 7-9)	30301-F	----	----	----	
7	1	Chuck Jaw	30301	----	----	----	
8	1	Follower	40303	----	----	----	
9	1	Spring	50306	----	----	----	
10	1	Anvil Adapter	70331	70331	70331	70331	
11	1	Roll Pin	400641	400641	400641	400641	
12	1	Collet Adapter	70332	70332	70332	70332	