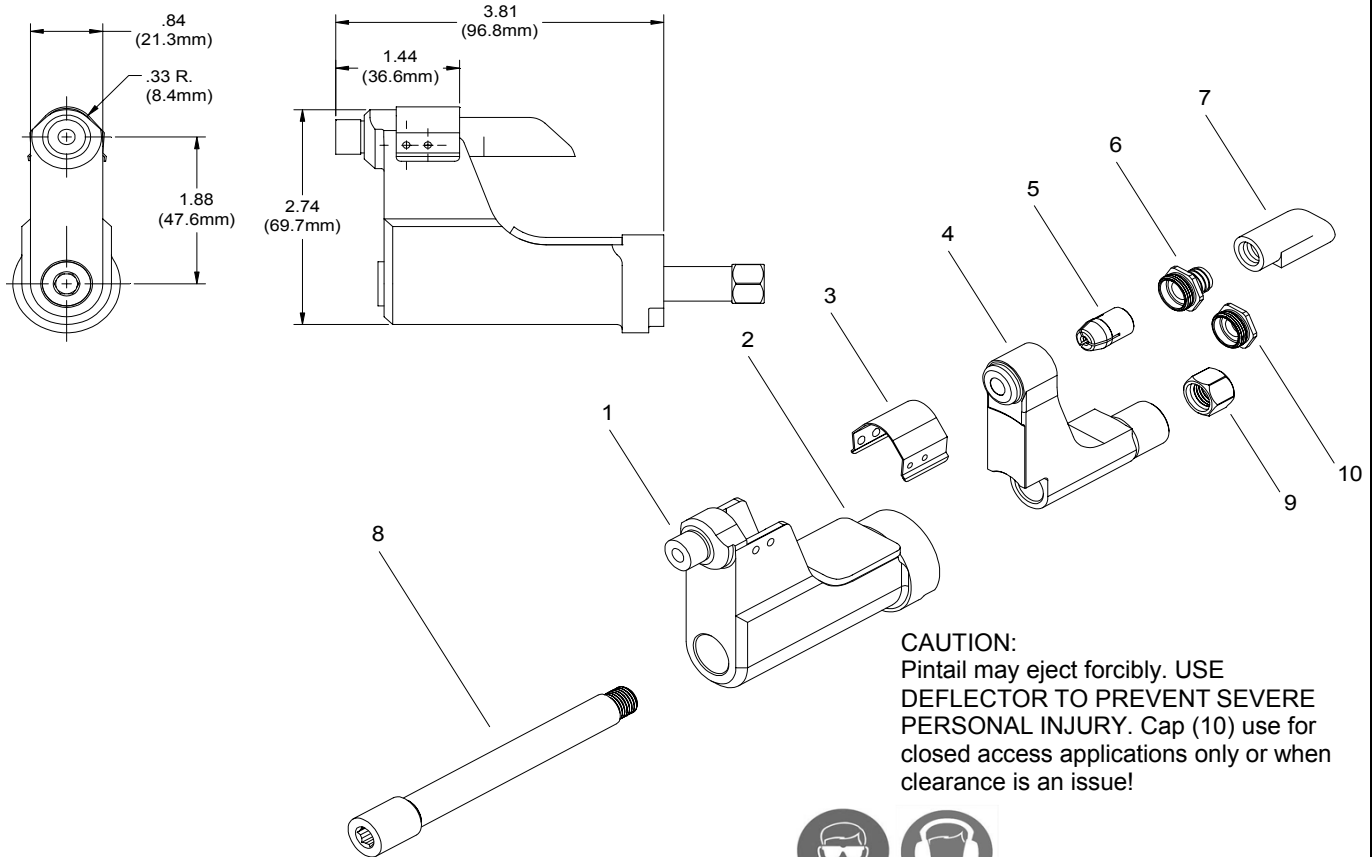


NOSE ASSEMBLY DATA SHEET



CAUTION:
Pintail may eject forcibly. USE DEFLECTOR TO PREVENT SEVERE PERSONAL INJURY. Cap (10) use for closed access applications only or when clearance is an issue!



ASSEMBLY INSTRUCTIONS:

On front of GB204 Installation Tool remove screw and stop. With collet placed in anvil, install on tool. Slide drawbar thru anvil and collet. Using an allen wrench, tighten the nut on the end of the draw bar (apply Vibra-Tite® part no. 405124 to threads on draw bar). Replace screw and stop on tool.

*Use Adapter No. 751204.
**Use Adapter No. 353204.

1/11 REV. 3/12
Covered Under Patent No. 5,371,933

GAGE BILT
MADE IN U.S.A.

GAGE BILT Inc.
44766 Centre Court (586) 226-1500
Clinton Twp. MI 48038 (586) 226-1505 Fax
e-mail:solutions@gagebilt.com / www.gagebilt.com

Type:		Fasteners:	Recommended Tool: GB204A	
Non Self-Releasing 8-32 & 10-32 Ø		Grounding Stud	Alternate Tools: *GB752, **GB745 & *GB731	
Ref. No.	Qty.	Description	GS8-204D-42OS	GS10-204D-42OS
1	1	Anvil Insert	18847	11049
2	1	Anvil & Holder Assembly	13394	19997
3	1	Guard	60426	60426
4	1	Collet	20723	20723
5	1	Super-Grip Jaw Assembly	30545-S8	30656-S9
6	1	Barbed Retainer	70569	70569
7	1	Deflector	61107	61107
8	1	Drawbar	71116	71116
9	1	Nut	71114	71114
10	1	Cap	70571	70571