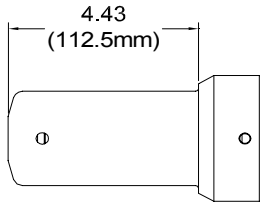
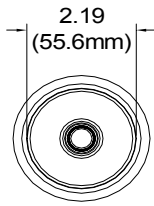
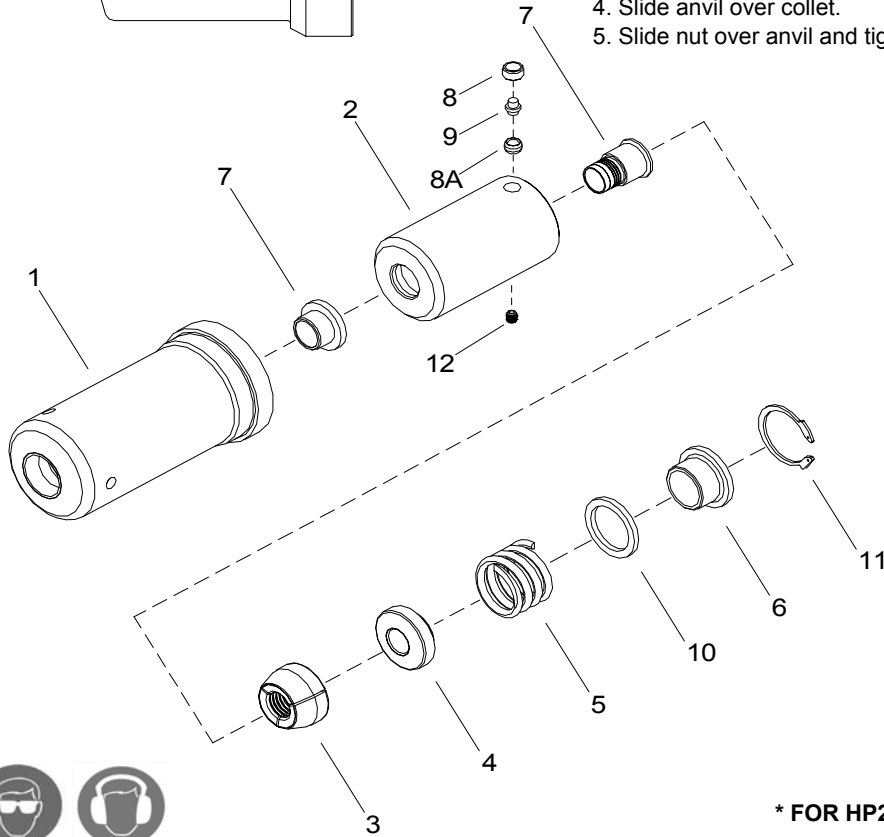


NOSE ASSEMBLY DATA SHEET



1. Drop sleeve into tool adapter. (except -24)
2. Hand screw collet onto piston until it stops.
Screw by hand only!
3. Unscrew collet to align pin-collet lock assembly with closest groove on piston. Screw in set screw
4. Slide anvil over collet.
5. Slide nut over anvil and tighten.



Rev. 8/06

* FOR HP24 ONLY

GAGE BILT

GAGE BILT Inc.

44766 Centre Court (586) 226-1500
 Clinton Twp. MI 48038 (586) 226-1505 Fax
 e-mail: solutions@gagebilt.com / www.gagebilt.com

Type:		Fastener:	Recommended Tool:		
Self-Releasing 1/2", 3/4" & 5/8" Ø		HP8 -20 also for HP 10.9 (16mm)	GBP7500A(A)		
Ref. No.	Qty.	Description	HP16-7500-41	HP20-7500-41	HP24-7500-44
1	1	Anvil	11609	12005	12412
2*	1	Collet Assembly (Inc. 7, 8, 9 & 12)	-----	-----	22413
2	1	Collet Assembly (Inc. 7, 8A & 12)	21608	22006	-----
3	1	Jaw Set	31601	32001	32401
4	1	Follower	41608	42006	42405
5	1	Spring	52007	52007	52007
6	1	Sleeve	61611	62010	62406
7	1	Release & Ejector Kit	81600	82000	82417
8*	1	Retainer - Collet	-----	-----	54505
8A	1	Ball Lock Assembly	54502	54502	-----
9*	1	Pin - Collet Lock	-----	-----	54508
10*	1	Spacer	-----	-----	55020
11	1	Retaining Ring	402263	402263	402263
12	1	Set Screw	A-280	A-280	A-280