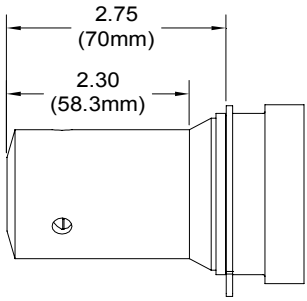
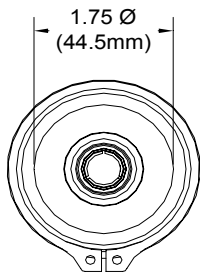
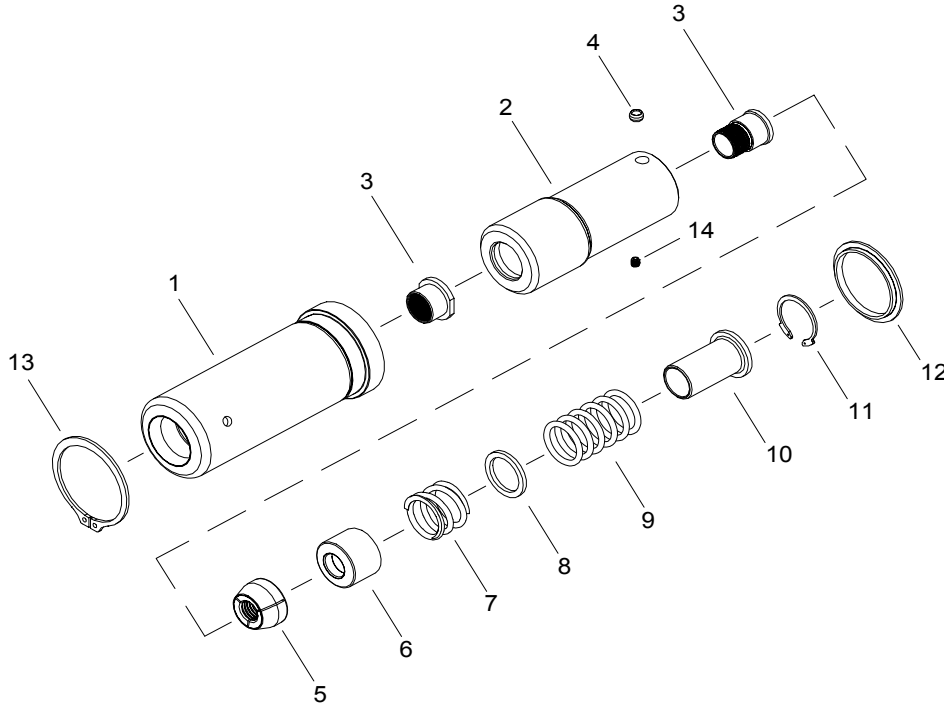


NOSE ASSEMBLY DATA SHEET



1. Ensure Piston is in full forward position.
2. Disconnect tool control cord.
3. Screw assembled Collet onto Piston until top of collet flat lines up with Adapter face of tool.
4. If Collet Lock (4) is not in Piston groove, continue to turn 1/4 turn, or less until lock engages groove.
5. Tighten Set Screw (14) on (new noses).
6. Slide Anvil (1) over assembled Collet. Install Split Ring, Sleeve (furnished with tool) and Retaining Ring (13).



Rev. 5/07

GAGE BILT
MADE IN U.S.A.

GAGE BILT Inc.

44766 Centre Court (586) 226-1500
Clinton Twp. MI 48038 (586) 226-1505 Fax
e-mail:solutions@gagebilt.com / www.gagebilt.com

Type:		Fastener:	Recommended Tool:
Self-Releasing 20MM Ø		HP10.9MM	GB585
			Alternate Tools: Model 585 or Model 586
Ref. No.	Qty.	Description	HP20MM-585-46
1	1	Anvil	12014
2	1	Collet Assembly (Inc. 3,4 & 14)	22012
3	1	Release & Ejector Kit	82056
4	1	Ball Lock Assenbly	54502
5	1	Jaw Set	32406
6	1	Follower	61611
7	1	Spring	52001
8	1	Spacer	55020
9	6	O'Ring	400846
10	1	Sleeve	62006
11	1	Retaining Ring	402263
12	1	Sleeve Collet Lock	62402
13	1	Retaining Ring	401027
14	1	Set Screw	A-280