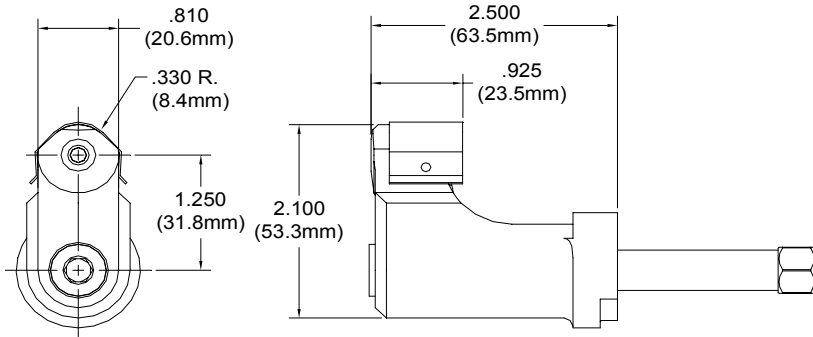
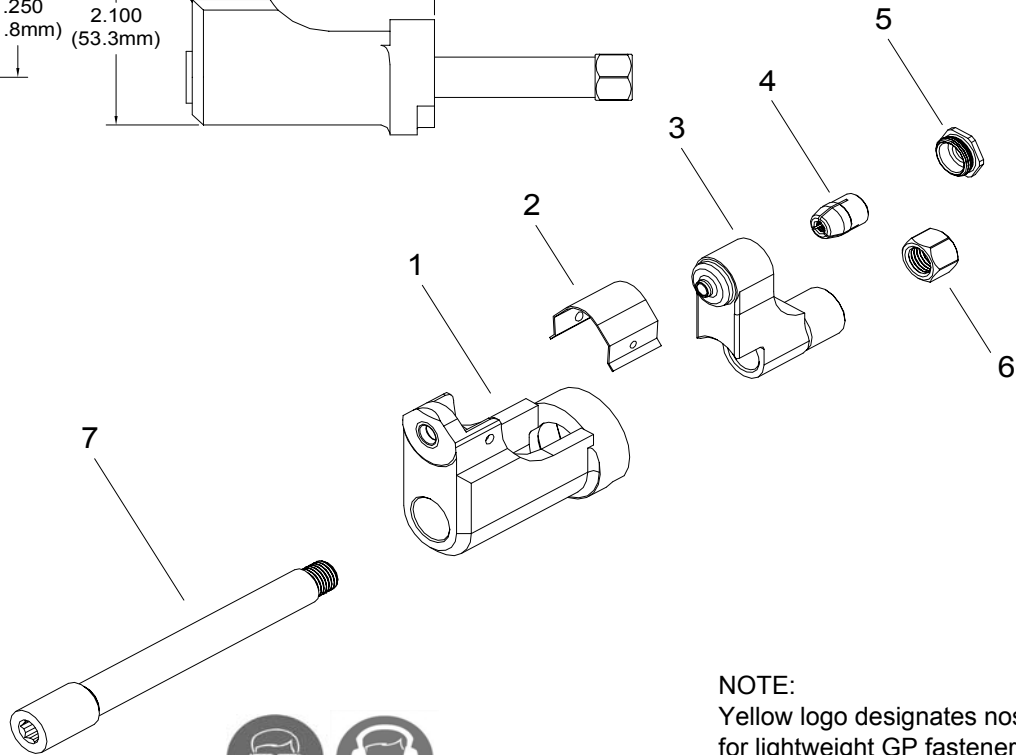


NOSE ASSEMBLY DATA SHEET



CAUTION:
Pintail may eject forcibly. Use for closed access applications only to prevent SEVERE PERSONAL INJURY!



NOTE:
Yellow logo designates nose assy's for lightweight GP fasteners.

ASSEMBLY INSTRUCTIONS:

On front of GBP204 Installation Tool remove screw and stop. With collet placed in anvil, install on tool. Slide drawbar thru anvil and collet. Screw nut on rear of draw bar. Screw draw bar into piston until it stops. Replace screw and stop on tool.

*Use Adapter No. 751204.
**Use Adapter No. 353204.

Rev. 12/09
Covered Under Patent No. 5,371,933

GAGE BILT
MADE IN U.S.A.

GAGE BILT PRODUCTS CORP.

44766 Centre Court (586) 226-1500
Clinton Twp. MI 48038 (586) 226-1505 Fax
e-mail:solutions@gagebilt.com / www.gagebilt.com

Type:		Fasteners:		Recommended Tool:	
Non Self-Releasing 5/32", 3/16" & 1/4" Ø		LGP® Lockbolt		GBP204A	
				Alternate Tools: *GBP731 & **GBP745D	
Ref. No.	Qty.	Description	LGP05-204B-25OS	LGP06-204B-25OS	LGP08-204B-25OS
1	1	Anvil	15540	16627	18829
2	1	Guard	60426	60426	60426
3	1	Collet	20550	20662	20885
4	1	Super-Grip Jaw Assembly	30543-S2	30654-S2	30862-S2
5	1	Cap	70647	70647	70647
6	1	Nut	71114	71114	71114
7	1	Drawbar	71116	71116	71116