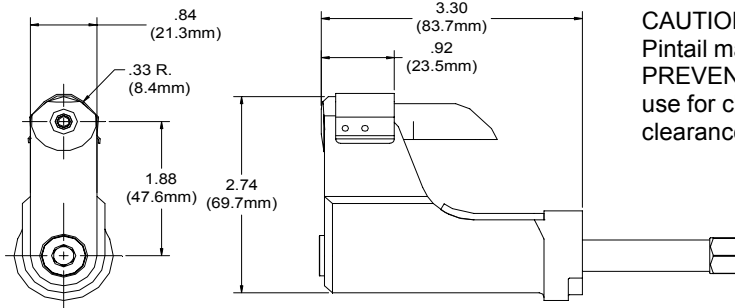
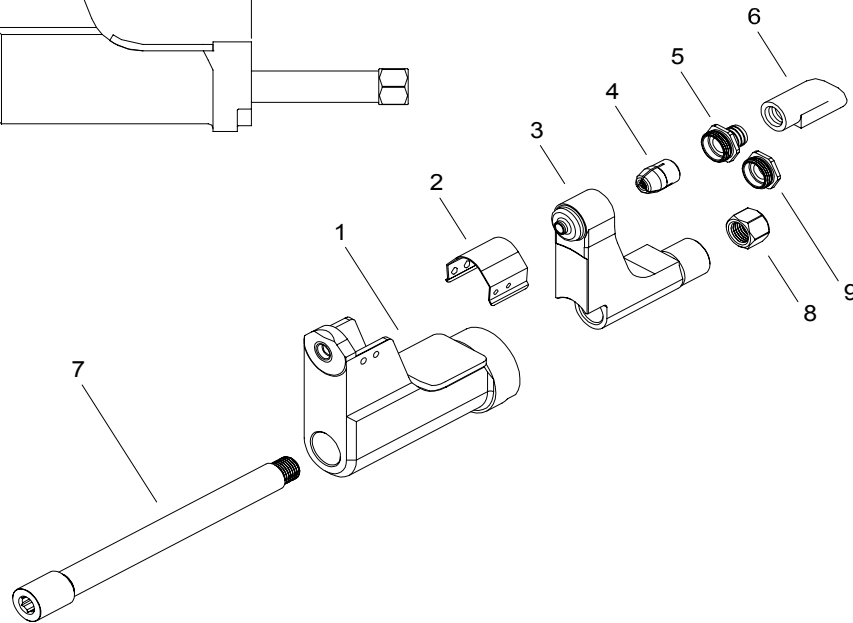


# NOSE ASSEMBLY DATA SHEET



**CAUTION:**  
Pintail may eject forcibly. USE DEFLECTOR TO PREVENT SEVERE PERSONAL INJURY. Cap (9) use for closed access applications only or when clearance is an issue!



**ASSEMBLY INSTRUCTIONS:**

On front of GB204 Installation Tool remove screw and stop. With collet placed in anvil, install on tool. Slide drawbar thru anvil and collet. Screw nut on rear of draw bar. Screw draw bar into piston until it stops. Replace screw and stop on tool.

**NOTE:**  
Yellow logo designates nose assy's for lightweight GP® fasteners.

\*Use Adapter No. 751204.  
\*\*Use Adapter No. 353204.

1/11

Covered Under Patent No. 5,371,933

**GAGE BILT**  
MADE IN U.S.A.

**GAGE BILT Inc.**

44766 Centre Court (586) 226-1500  
Clinton Twp. MI 48038 (586) 226-1505 Fax  
e-mail:solutions@gagebilt.com / www.gagebilt.com

Type:		Fasteners:	Recommended Tool: GB204A		
Non Self-Releasing 5/32", 3/16" & 1/4" Ø		LGP® Lockbolt	Alternate Tools: **GB745 & *GB731		
Ref. No.	Qty.	Description	LGP05-204C-340S	LGP06-204C-340S	LGP08-204C-340S
1	1	Anvil	15543	16639	18832
2	1	Guard	60426	60426	60426
3	1	Collet	20554	20673	20890
4	1	Super-Grip Jaw Assembly	30543-S9	30654-S9	30862-S5
5	1	Barbed Retainer	70569	70569	70569
6	1	Deflector	61107	61107	61107
7	1	Drawbar	71117	71117	71117
8	1	Nut	71114	71114	71114
9	1	Cap	70571	70571	70571