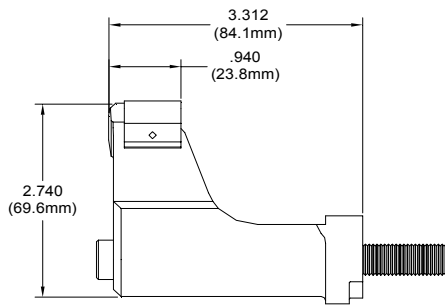
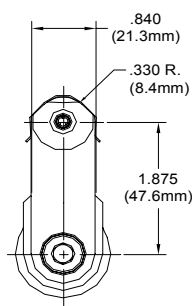
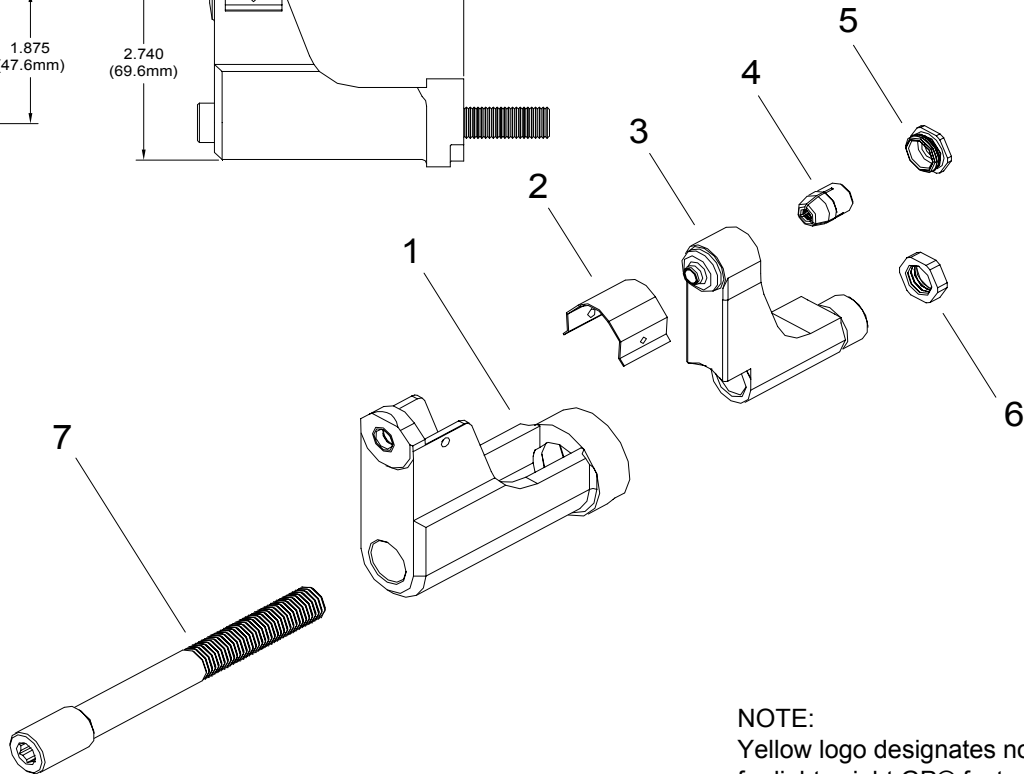


NOSE ASSEMBLY DATA SHEET



CAUTION:
Pintail may eject forcibly. Use for closed access applications only to prevent SEVERE PERSONAL INJURY!



NOTE:
Yellow logo designates nose assy's for lightweight GP® fasteners.

ASSEMBLY INSTRUCTIONS:

On front of GBP206A-375 Installation Tool remove screw and stop. With collet placed in anvil, install on tool. Slide drawbar thru anvil and collet. Screw draw bar into piston until it stops. Attach nut on rear of draw bar. Replace screw and stop on tool.



*Use Adapter No. 751206.

**Use Adapter No. 353206.

Rev. 12/09

GAGE BILT

GAGE BILT Inc.

44766 Centre Court (586) 226-1500
Clinton Twp., MI 48038 (586) 226-1505 Fax
e-mail:solutions@gagebilt.com / www.gagebilt.com

Type:		Fasteners:		Recommended Tool:	
Non Self-Releasing 5/32", 3/16" & 1/4" Ø		LGP® Lockbolt		GBP206A-375	
				Alternate Tools: *GB731 & **GBP745D	
Ref. No.	Qty.	Description	LGP05-206E-34OS	LGP06-206E-34OS	LGP08-206E-34OS
1	1	Anvil	15543	16639	18832
2	1	Guard	60426	60426	60426
3	1	Collet	20554-1	20673-1	20890-1
4	1	Super-Grip Jaw Assembly	30543-S2	30654-S2	30862-S2
5	1	Cap	70647	70647	70647
6	1	Nut	70546	70546	70546
7	1	Drawbar	71121	71121	71121