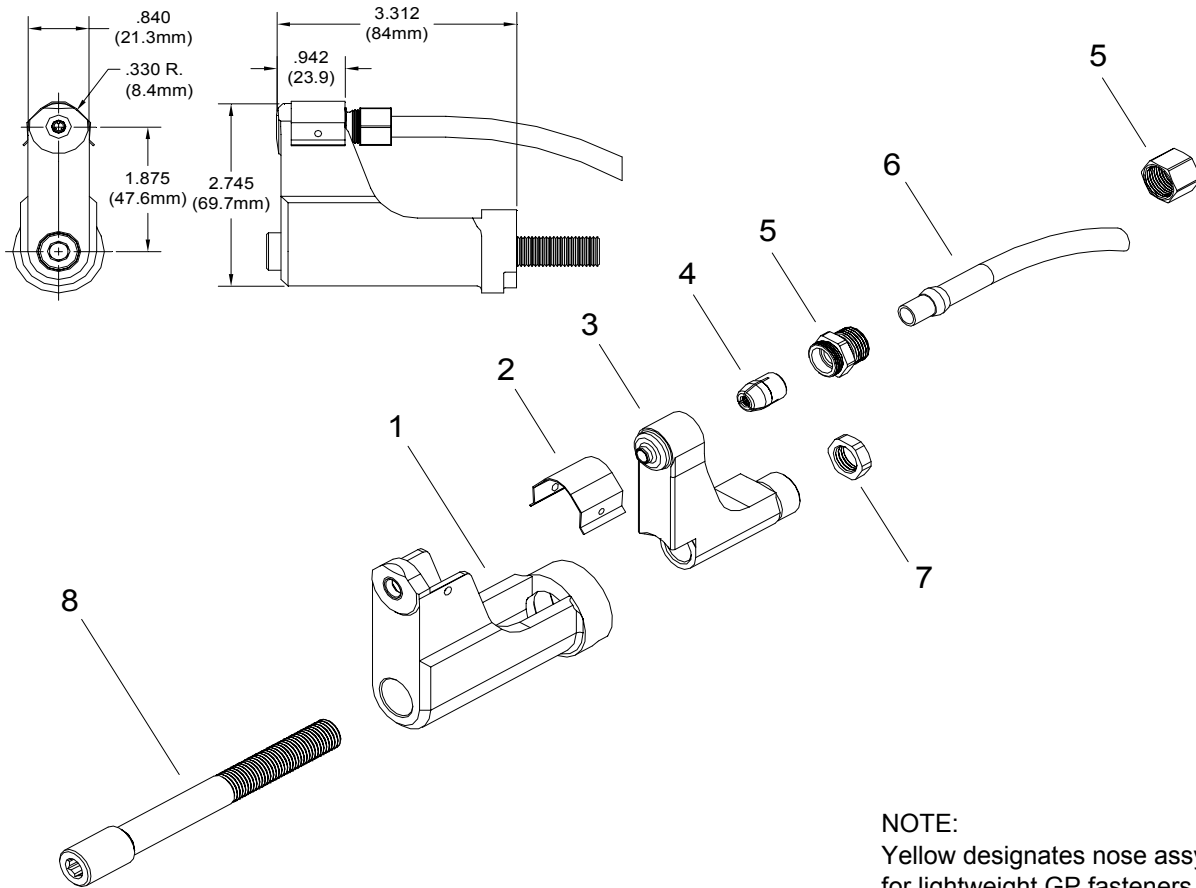


# NOSE ASSEMBLY DATA SHEET



NOTE:  
Yellow designates nose assy's  
for lightweight GP fasteners.

### ASSEMBLY INSTRUCTIONS:

On front of GBP206A-375 Installation Tool remove screw and stop. Slide drawbar thru anvil and collet. Tighten nut onto drawbar and lock against the collet. With collet held against anvil, install on tool. Replace screw and stop on tool.



Rev. 12/09

\*Use Adapter No. 751206.  
\*\*Use Adapter No. 353206.

## GAGE BILT

### GAGE BILT Inc.

44766 Centre Court (586) 226-1500  
Clinton Twp. MI 48038 (586) 226-1505 Fax  
e-mail:solutions@gagebilt.com / www.gagebilt.com

Type:		Fasteners:		Recommended Tool: GBP206A-375	
Non Self-Releasing 5/32", 3/16" & 1/4" Ø		Lightweight GP® Lockbolts		Alternate Tools: *GB731 & **GBP745D	
Ref. No.	Qty.	Description	LGP05-206E-34OT	LGP06-206E-34OT	LGP08-206E-34OT
1	1	Anvil	15543	16639	18832
2	1	Guard	60426	60426	60426
3	1	Collet	20554-1	20673-1	20890-1
4	1	Super-Grip Jaw Assembly	30543-S2	30654-S2	30862-S2
5	1	Cap	70560	70560	70560
6	1	Deflector Tube Assembly	61104	61104	61104
7	1	Nut	70546	70546	70546
8	1	Drawbar	71121	71121	71121