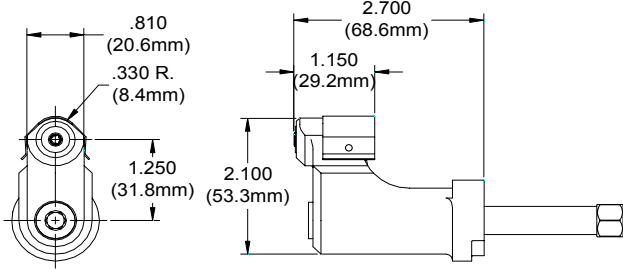
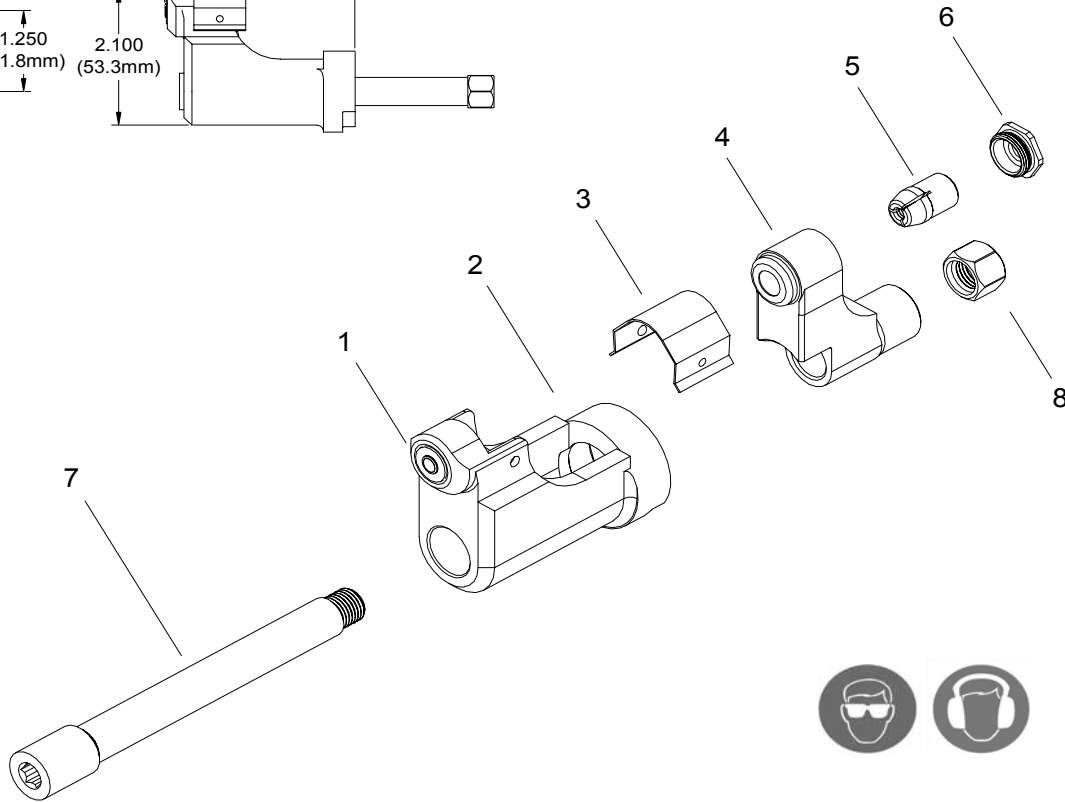


NOSE ASSEMBLY DATA SHEET



CAUTION:
Pintail may eject forcibly. Use for closed access applications only to prevent SEVERE PERSONAL INJURY!



ASSEMBLY INSTRUCTIONS:

On front of GBP204 Installation Tool remove screw and stop. With collet placed in anvil, install on tool. Slide drawbar thru anvil and collet. Screw nut on rear of draw bar and lock against collet. Screw draw bar into piston until it stops. Replace screw and stop on tool.

10/06 Rev. 2/08
Covered Under Patent No. 5,371,933

*Use Adapter No. 751204.
**Use Adapter No. 353204.
***Use Adapter No. 751204 with 712154 stroke limiter.

GAGE BILT
MADE IN USA

GAGE BILT PRODUCTS CORP.

14500 Barber Drive (586) 771-7664
Warren, Mi 48088 (586) 771-2665 Fax
e-mail:solutions@gagebilt.com / www.gagebilt.com

| Type: | | Fasteners: | | Recommended Tool: GBP204 | |
|--------------------------------------|------|--------------------------|---------------|---|--|
| Non Self-Releasing 3/16" & 1/4" Ø | | MONOBOLT® | | Alternate Tools: *GBP752E, **GBP745D & ***GBP713C | |
| Ref. No. | Qty. | Description | MB06-204-270S | MB08-204-270S | |
| 1 | 1 | Anvil Insert | 16001 | 18862 | |
| 2 | 1 | Anvil Assembly (Inc. #1) | 12237 | 12238 | |
| 3 | 1 | Guard | 60426 | 60426 | |
| 4 | 1 | Collet | 20722 | 20722 | |
| 5 | 1 | Super-Grip Jaw Assembly | 30656-S4 | 30864-S9 | |
| 6 | 1 | Cap | 70647 | 70647 | |
| 7 | 1 | Drawbar | 71116 | 71116 | |
| 8 | 1 | Nut | 71114 | 71114 | |