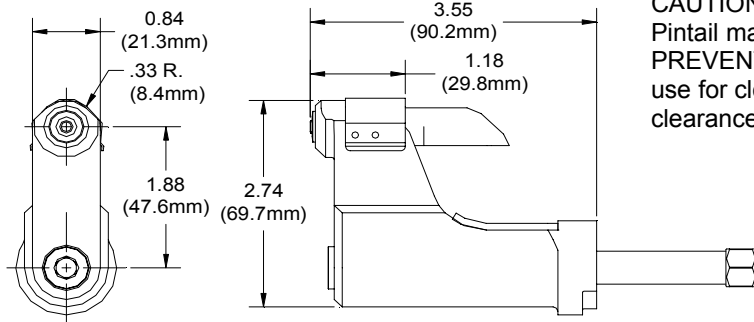
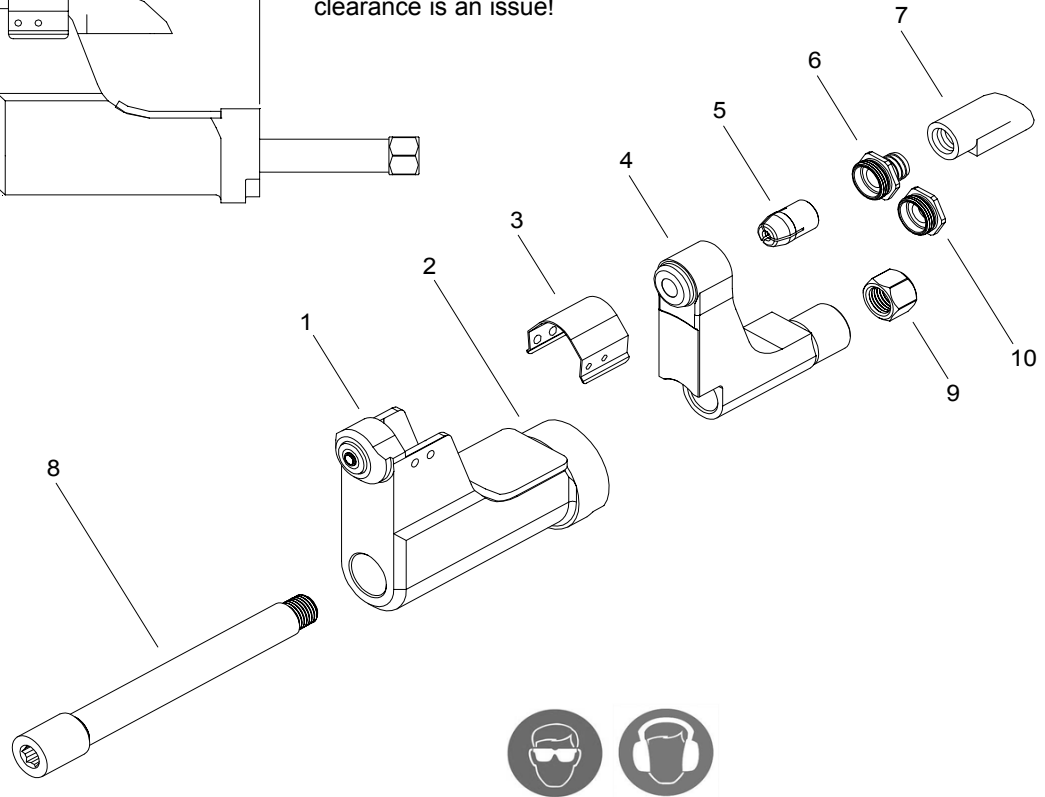


# NOSE ASSEMBLY DATA SHEET



**CAUTION:**  
Pintail may eject forcibly. USE DEFLECTOR TO PREVENT SEVERE PERSONAL INJURY. Cap (10) use for closed access applications only or when clearance is an issue!



**ASSEMBLY INSTRUCTIONS:**

On front of GB204 Installation Tool remove screw and stop. With collet placed in anvil, install on tool. Slide drawbar thru anvil and collet. Using an allen wrench, tighten the nut on the end of the draw bar (apply Vibra-TITE® part no. 405124 to threads on draw bar). Replace screw and stop on tool.

1/11 REV. 3/12

Covered Under Patent No. 5,371,933

\*Use Adapter No. 751204.

\*\*Use Adapter No. 353204.

**GAGE BILT**  
MADE IN U.S.A.

**GAGE BILT Inc.**

44766 Centre Court (586) 226-1500  
Clinton Twp. MI 48038 (586) 226-1505 Fax  
e-mail:solutions@gagebilt.com / www.gagebilt.com

Type:		Fasteners:		Recommended Tool:	
Non Self-Releasing 1/8, 5/32 & 3/16 Ø		MBC® NAS 1719 NAS 1720 NAS 1721		GB204A	
				Alternate Tools: *GB752, **GB745 & **GB722	
Ref. No.	Qty.	Description	MBC04-204D-370S	MBC05-204D-370S	MBC06-204D-370S
1	1	Anvil Insert	10259	10260	10261
2	1	Anvil Assembly (Inc. #1)	19985	19986	19987
3	1	Guard	60426	60426	60426
4	1	Collet	20723	20723	20723
5	1	Super-Grip Jaw Assembly	30425-S7	30545-S2	30656-S9
6	1	Barbed Retainer	70569	70569	70569
7	1	Deflector	61107	61107	61107
8	1	Drawbar	71116	71116	71116
9	1	Nut	71114	71114	71114
10	1	Cap	70571	70571	70571