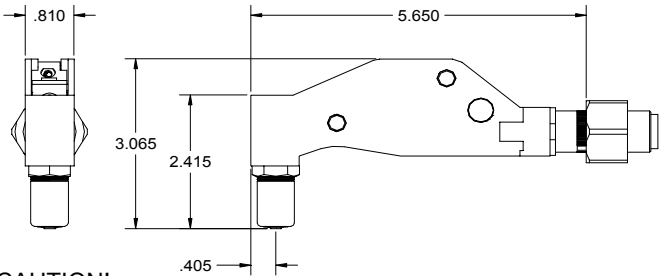


NOSE ASSEMBLY DATA SHEET



CAUTION!

Pintails may eject forcibly. This nose is for closed access applications. If used in open access applications, 704214 catcher bag is recommended TO PREVENT SEVERE PERSONAL INJURY.

Nose Assembly	Anvil-Driving	Jaw Set
MBC04-751A-54RA	10259	30425
MBC05-751A-54RA	10260	30545
MBC06-751A-54RA	10261	30656

*MOST FASTENERS REQUIRE MORE THAN ONE PULL.

9/07 Rev. 10/07

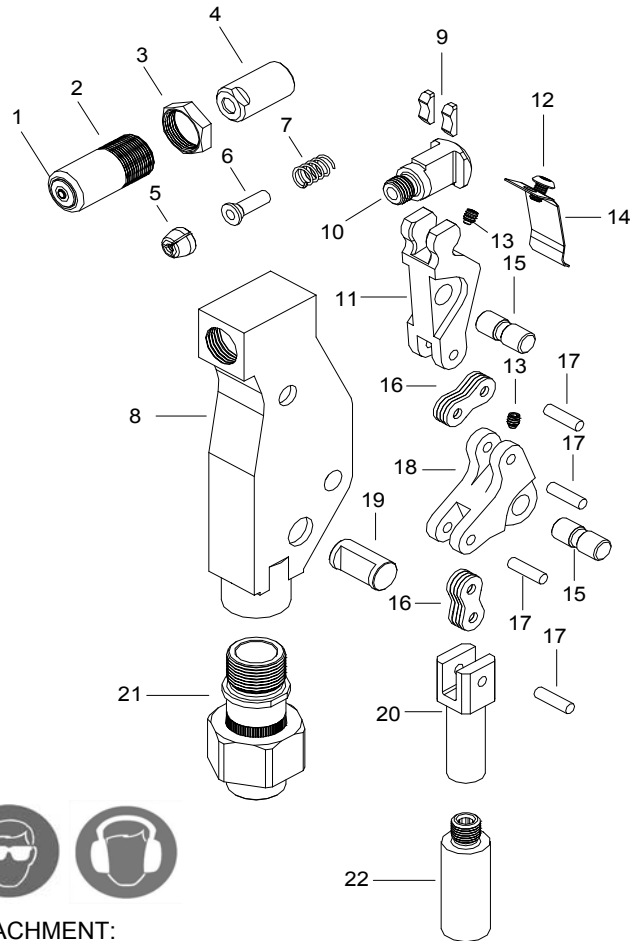
GAGE BILT

GAGE BILT Inc.

44766 Centre Court (586) 226-1500
 Clinton Twp., MI48038 (586) 226-1505 Fax
 e-mail:solutions@gagebilt.com / www.gagebilt.com

Type:	Fasteners:	Recommended Tool:
Single Action 1/8", 5/32 & 3/16" Ø	NAS1719 NAS1720 NAS1721 MBC®	GB751

Ref. No.	Qty.	Description	MBC-751A-54RA
1	1	Anvil-Driving	See Chart
2	1	Sleeve	10115
3	1	Jam Nut	70411
4	1	Collet	20563
5	1	Jaw Set	See Chart
6	1	Follower	40301
7	1	Spring	50311
8	1	Frame	75310
9	2	Shoe Bearing	75311
10	1	Collet Bolt	70443
11	1	Lever	75313
12	1	But. Hd Screw	402471
13	2	Set Screw	75315
14	1	Guard	75316
15	2	Pivot Pin	75317
16	8	Link	75318
17	4	Link Pin	75319
18	1	Bell Crank	75320
19	1	Guide Pin	75321
20	1	Drawbolt	75322
21	1	Adapter Assembly	70459
22	1	Collet Adapter	70463



ATTACHMENT:

Screw collet adapter (22) onto head piston adapter fitting (21) into nose adapter and hand tighten nut. Nose assembly should rotate if stop is properly aligned when tightening.

DISASSEMBLY:

Loosen jam nut (3) and remove sleeve (2). Unscrew collet (4) which contains jaws (5), follower (6), and spring (7) from collet bolt (10).

Remove screw (12) and guard (14). Remove 2 set screws (13) and push out 2 pivot pins (15) to permit removal of linkage. Shoe bearings (9) and collet bolt (10) will disengage from lever (11).

Remove 4 link pins (17) to disassemble lever (11), links (16), bell crank (18) and drawbolt (20).

Remove guide pin (19) from frame (8). Adapter fitting (21) is secured to frame with Loctite® and need not be removed unless damaged.

REASSEMBLY:

Reverse the procedure. Linkage, consisting of lever (11), links (16), bell crank (18) and drawbolt (20) should be assembled as a subassembly before inserting lever (11) into shoe bearings (9) and collet bolt (10). MAKE SURE NOTCHES ON COLLET BOLT (10) ARE POINTING TOWARDS LEVER (11). This complete subassembly may then be inserted into frame (8) and retained by guide pin (19) and pivot pins (15).