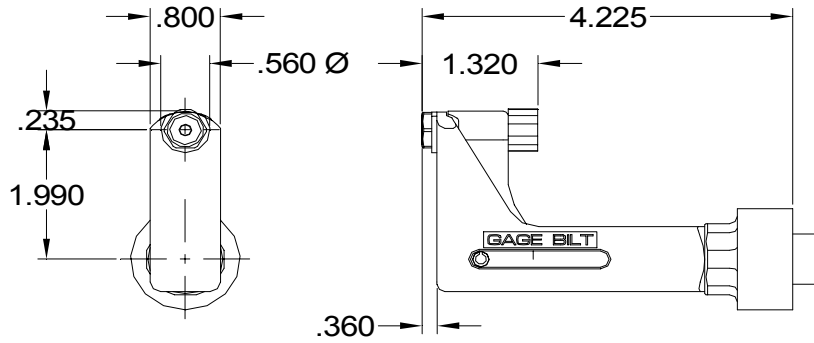
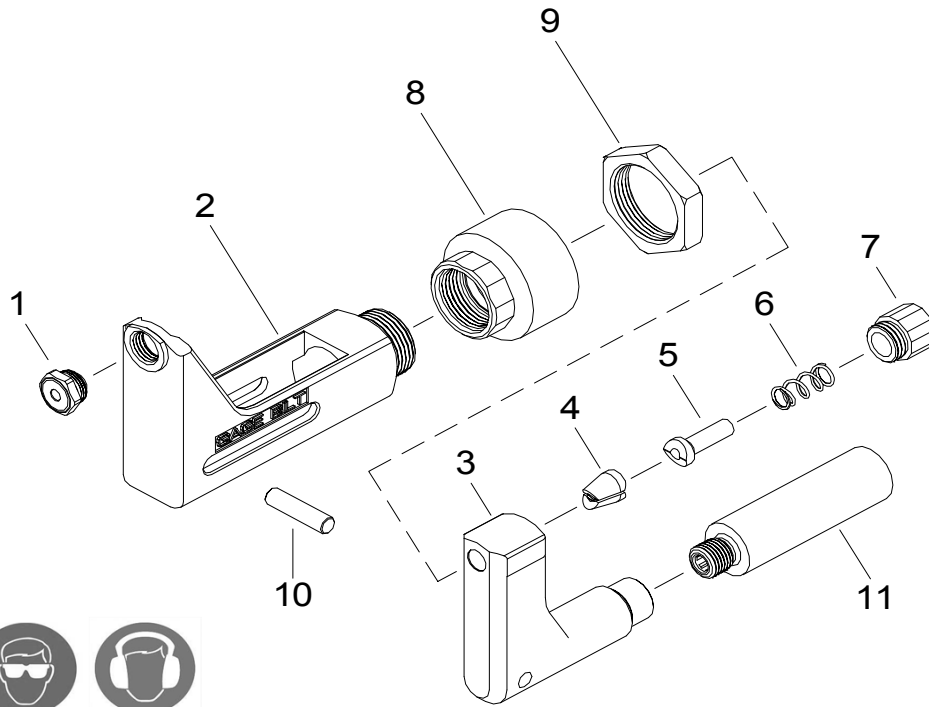


NOSE ASSEMBLY DATA SHEET



Attachment:

Screw on jam nut (70336) onto nose fitting of tool at least 3/4". Screw nose assembly onto nose fitting of tool until it stops then back off until nose is in desired position. (Warning: do not back off nose assembly more than one complete turn). Lock jam nut (70336) against adapter (70331).



Rev. 5/07

GAGE BILT
MADE IN U.S.A.

GAGE BILT Inc.

44766 Centre Court (586) 226-1500
Clinton Twp., MI48038 (586) 226-1505 Fax
e-mail:solutions@gagebilt.com / www.gagebilt.com

Type:		Fasteners:				Recommended Tool:	
Self-Releasing 3/32", 1/8", 5/32" & 3/16" Ø		MS20600 SERIES MS/PT/9SP BACR15CC/CF/DA/DR				GB751	
Alternate Tools: GB752, GB722 & GB2480							
Ref. No.	Qty.	Description	MS3-751-430S	MS4-751-430S	MS5-751-430S	MS6-751-430S	
1	1	Nose Tip	10247-1	10202-4	10206-1	10425	
2	1	Anvil Holder	13368	13368	13368	13368	
3	1	Collet	20914	20914	20914	20914	
4	1	Jaw Set	30617	30617	30311-1	30311-1	
5	1	Follower	40506	40506	40506	40304-2	
6	1	Spring	50418	50418	50418	50418	
7	1	Cap	60429	60429	60429	60429	
8	1	Anvil Adapter	70331	70331	70331	70331	
9	1	Jam Nut	70336	70336	70336	70336	
10	1	Pin	70468	70468	70468	70468	
11	1	Collet Adapter	70332	70332	70332	70332	