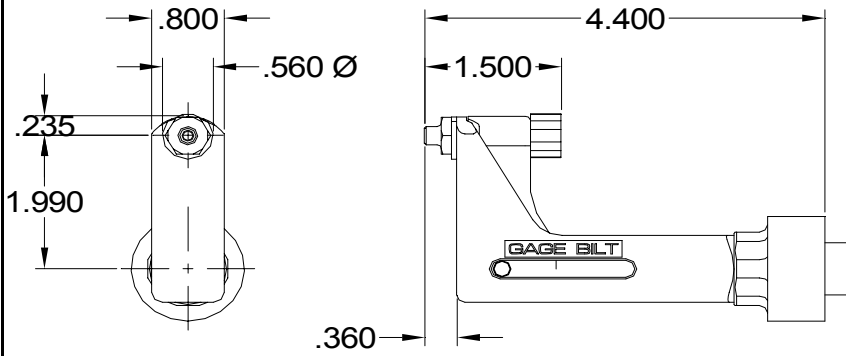
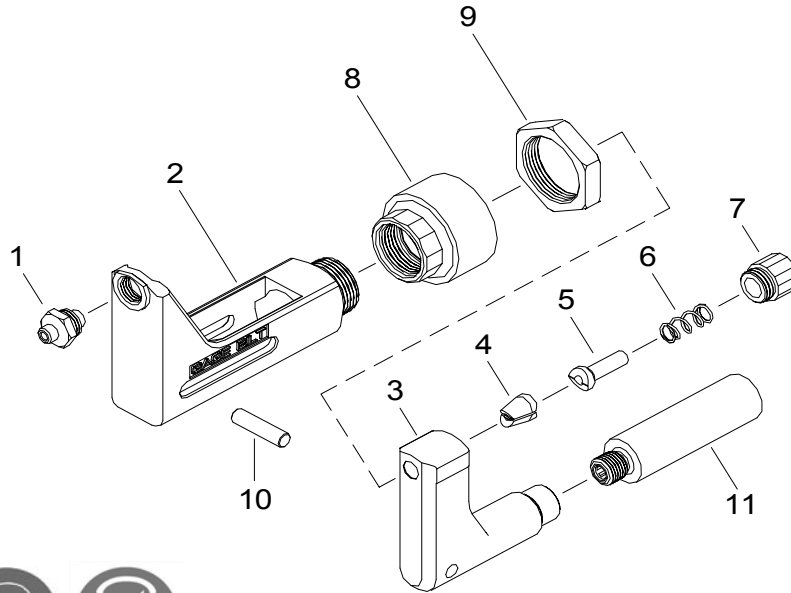


NOSE ASSEMBLY DATA SHEET



Attachment:

Screw on jam nut (70336) onto nose fitting of tool at least 3/4". Screw nose assembly onto nose fitting of tool until it stops then back off until nose is in desired position. (Warning: do not back off nose assembly more than one complete turn). Lock jam nut (70336) against adapter (70331).



Rev. 10/07



GAGE BILT
MADE IN U.S.A.

GAGE BILT PRODUCTS CORP.

14500 Barber Drive (586) 771-7664
Warren, Mi 48088 (586) 771-2665 Fax
e-mail:solutions@gagebilt.com / www.gagebilt.com

Type:	Fasteners:	Recommended Tool: GBP751C
Self-Releasing 3/32", 1/8", 5/32" & 3/16" Ø	N, Q & E POP®, CLOSED END AVEX® & COMMERCIAL RIVETS	Alternate Tools: GBP752E, GBP713C & GBP2400B

Ref. No.	Qty.	Description	3N-751-430S	4N-751-430S	5N-751-430S	6N-751-430S
1	1	Nose Tip	10247	10202	12277	12278
2	1	Anvil Holder	13368	13368	13368	13368
3	1	Collet	20914	20914	20914	20914
4	1	Jaw Set	30617	30617	30311-1	30311-1
5	1	Follower	40506	40506	40506	40304-2
6	1	Spring	50418	50418	50418	50418
7	1	Cap	60429	60429	60429	60429
8	1	Anvil Adapter	70331	70331	70331	70331
9	1	Jam Nut	70336	70336	70336	70336
10	1	Pin	70468	70468	70468	70468
11	1	Collet Adapter	70332	70332	70332	70332