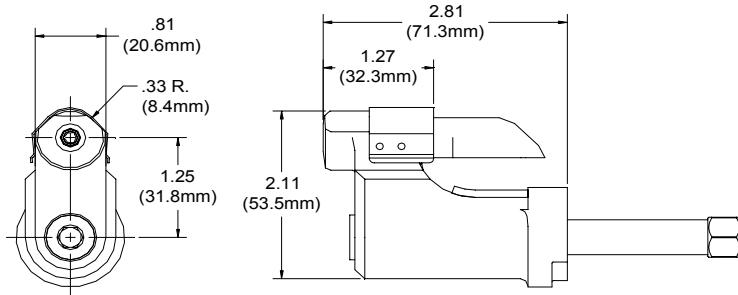
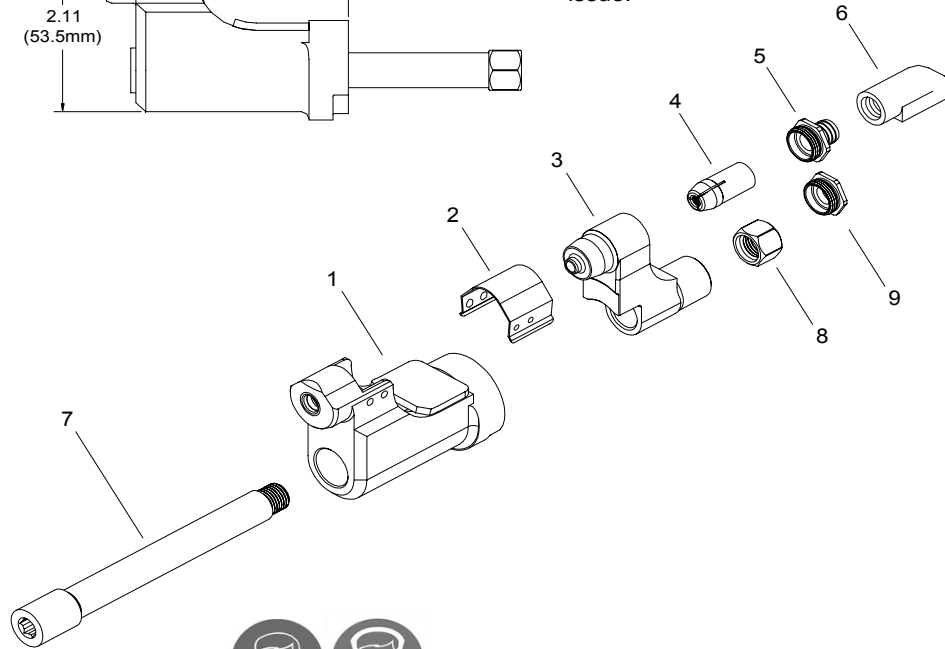


NOSE ASSEMBLY DATA SHEET



CAUTION:
Pintail may eject forcibly. USE DEFLECTOR TO PREVENT SEVERE PERSONAL INJURY. Cap (9) use for closed access applications only or when clearance is an issue!



ASSEMBLY INSTRUCTIONS:

On front of GB204 Installation Tool remove screw and stop. With draw bar and collet placed in the Housing, install on Tool. Using allen wrench & an end wrench, tighten nut on the end of the Draw Bar (Apply Vibra-TITE® part no. 405124 to threads on Draw Bar). Replace screw and stop on tool.

12/10

Covered Under Patent No. 5,371,933

*Use Adapter No. 751204.

**Use Adapter No. 353204.

GAGE BILT

MADE IN U.S.A.

GAGE BILT Inc.

44766 Centre Court (586) 226-1500
Clinton Twp. MI 48038 (586) 226-1505 Fax
e-mail:solutions@gagebilt.com / www.gagebilt.com

Type:		Fasteners:			Recommended Tool: GB204A	
Non Self-Releasing 5/32", 3/16" & 1/4" Ø		****GP®, ****NAS Shear and *****NAS Tension Lockbolts			Alternate Tools: *GB731 & **GB745	
Ref. No.	Qty.	Description	****NASS05- 204C-300S	*****NAST05- 204C-300S	NAS06- 204C-300S	NAS08- 204C-300S
1	1	Anvil	15583	15560	16654	18841
2	1	Guard	60426	60426	60426	60426
3	1	Collet	20561	20561	20681	20894
4	1	Super-Grip Jaw Assembly	30543-S8	30543-S8	30654-S8	30862-S4
5	1	Barbed Retainer	70569	70569	70569	70569
6	1	Deflector	61107	61107	61107	61107
7	1	Drawbar	71116	71116	71116	71116
8	1	Nut	71114	71114	71114	71114
9	1	Cap	70571	70571	70571	70571