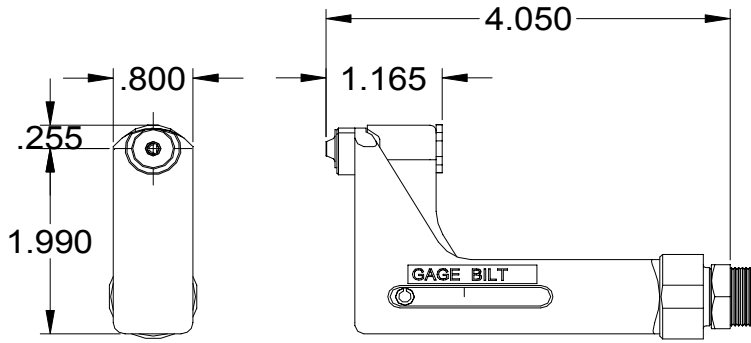
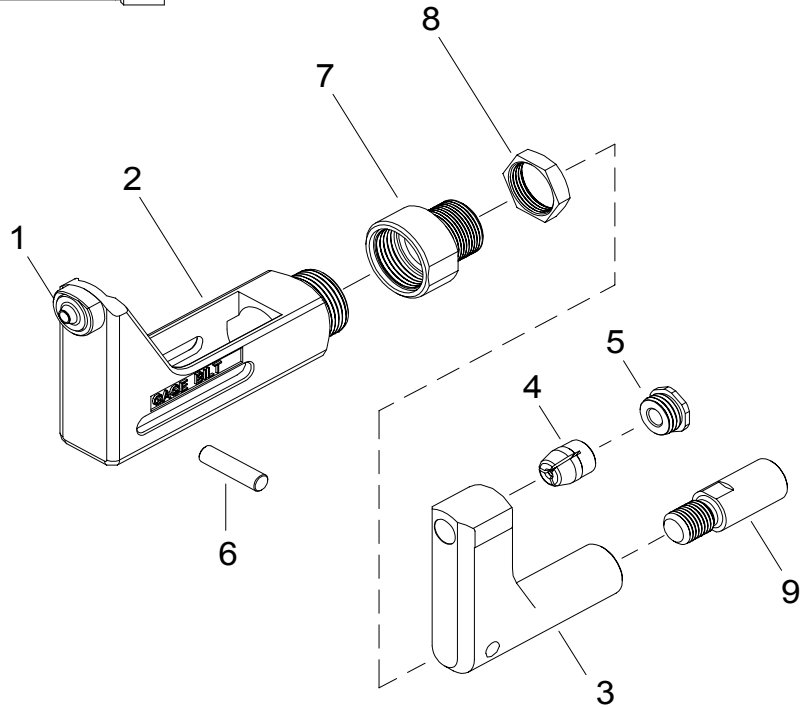


NOSE ASSEMBLY DATA SHEET



Attachment:

Screw nose assembly onto tool until it stops then back off until nose is in desired position. (Warning: do not back off nose assembly more than one complete turn). Lock jam nut (70411) against face of tool.



11/07 Rev. 5/12

GAGE BILT
MADE IN U.S.A.

GAGE BILT Inc.

44766 Centre Court (586) 226-1500
Clinton Twp., MI 48038 (586) 226-1505 Fax
e-mail:solutions@gagebilt.com / www.gagebilt.com

Type:		Fasteners:		Recommended Tool: GB715
Non Self-Releasing 5/32" & 3/16" Ø		BLIND BOLT (SINGLE ACTION) WITH OR W/OUT DRIVE WASHER MS90353S & U / MS90354S & U, MS21140S & U / MS21141S & U CR7000 SERIES, BACB30YY, YU, & YT		
Ref. No.	Qty.	Description	SB05-715-400S	SB06-715-400S
1	1	Anvil-Driving	10562	10683
2	1	Anvil & Holder Assembly	13399	12201
3	1	Collet	20911	20911
4	1	Super-Grip Jaw Assembly	30545-S3	30655-S3
5	1	Cap	60428	60428
6	1	Roll Pin	70468	70468
7	1	Anvil Adapter	70341	70341
8	1	Jam Nut	70411	70411
9	1	Collet Adapter	70340	70340