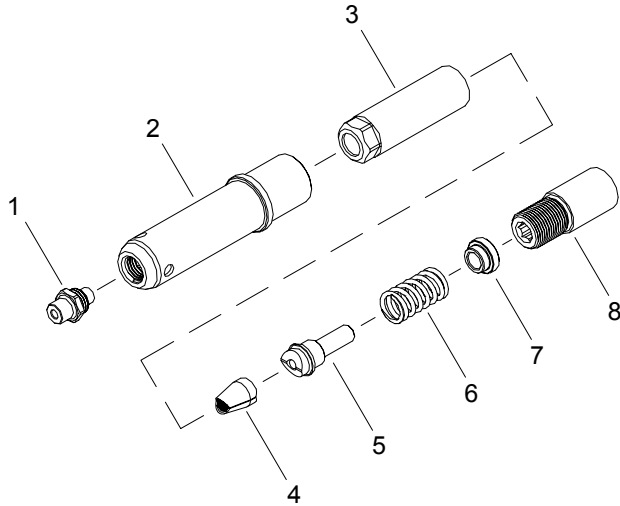
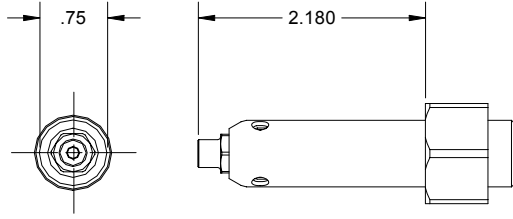


NOSE ASSEMBLY DATA SHEET



SELECTION CHART FOR COUNTERSUNK AND PROTRUDING HEAD RIVETS

FASTENER	DIA.	NOSE ASSEMBLY	NOSE TIP
N, Q & E, POP®, CLOSED END, AVEX®, MAGNA-LOK®, MAGNA-BULB, HEMLOK®, BULB-TITE® (NON-SRUCTURAL) & ULTRA-GRIP COMMERCIAL RIVETS	3/32	3N-352-21	10201
	1/8	4N-352-21	10202
	5/32	5N-352-21	10203
	3/16	6N-352-21	10204
C RIVET AVEX® (1624)	1/8	5N-352-21	10203
	5/32	6N-352-21	10204
	3/16	6C-352-21	10208
C-M RIVET	1/8	6N-352-21	10204
PLASTIC SPLIT	3/16	6P-352-21	10167
NUT PLATE RIVETS MS20600-MS20605	3/32	3NP-352-21	10231
	1/8	5N-352-21	10203
MBC	1/8	MBC04-352-21	10251
	5/32	MBC05-352-21	10252
	3/16	MBC06-352-21	10253
KLAMPTITE® RIVET	3/16	6KT-352-21	10263
	1/4	8KT-352-21	10262
MONOBOLT®	3/16	MB06-352-21	10210

SELECTION CHART FOR PROTRUDING HEAD RIVETS

N, Q & E, POP®, CLOSED END, AVEX®, MAGNA-LOK®, MAGNA-BULB, HEMLOK®, BULB-TITE® (NON-SRUCTURAL) & ULTRA-GRIP COMMERCIAL RIVETS	3/16	MGL06-352-21	10248
-------------------------------------------------------------------------------------------------------------------------------	------	--------------	-------

POP® IS A REGISTERED TRADEMARK BLACK & DECKER CO.
 MAGNA-LOK® IS A REGISTERED TRADEMARK OF HUCK INTERNATIONAL INC.
 HEMLOK®, AVEX®, MBC® & MONOBOLT® ARE REGISTERED TRADEMARKS OF AVDEL/CHERRY TEXTRON.

10/95 Rev. 10/07



***ALL TIPS ARE FOR C'SUNK OR PROTRUDING HEAD EXCEPT 10248 FOR PROTRUDING HEAD ONLY**

GAGE BILT
MADE IN U.S.A.

GAGE BILT PRODUCTS CORP.

14500 Barber Drive (586) 771-7664
 Warren, Mi 48088 (586) 771-2665 Fax
 e-mail:solutions@gagebilt.com / www.gagebilt.com

Type:		Fastener:	Recommended Tool: GBP751C Alternate Tools: GBP752E and GBP2400B(A)
Single Action		See Chart	
Ref. No.	Qty.	Description	XX-352-21
1	1	Nose Tip	See Chart
2	1	Anvil-Holder	10942
3	1	Collet	20413
4	1	Jaw Set	30537
5	1	Follower	40311
6	1	Spring	50421
7	1	Cap	40810
8	1	Collet-Extension	70823