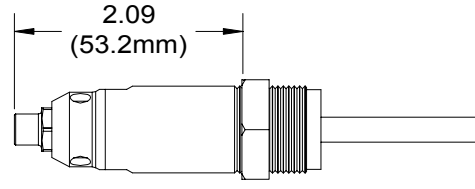
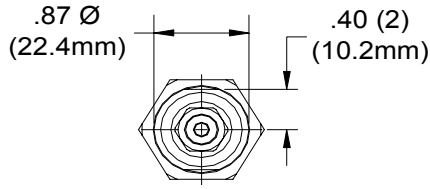


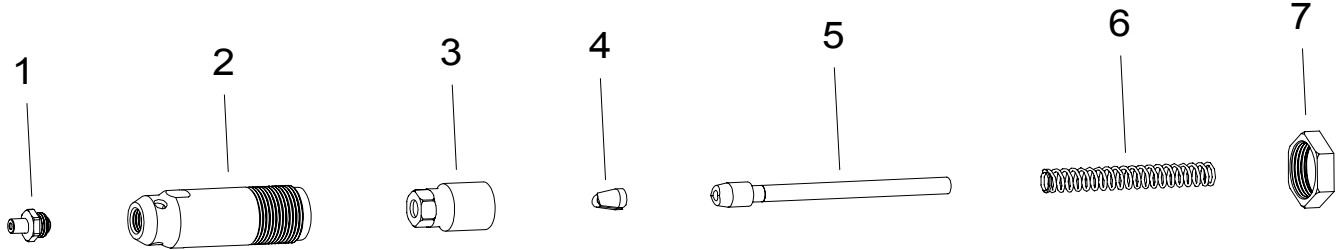
# NOSE ASSEMBLY DATA SHEET



RIVET	DIAMETER	NOSE ASSEMBLY	NOSE TIP	FOLLOWER
KLAMP-TITE® RIVET	3/16	6KT-703-18	10263	40605
MACHINE SCREW	5mm	MS5M-703-18	10332	40605
NAS1719, NAS1720, NAS1721 MBC®	1/8	MBC04-703-18	10251	40307
	5/32	MBC05-703-18	10252	40605
	3/16	MBC06-703-18	10253	40605
NUT PLATE RIVETS	3/32	3NP-703-18	10231	40307
	1/8	5N-703-18	10203	40605
OPEN END	3/32	3N-703-18	10201	40307
	1/8	4N-703-18	10202	40307
CLOSED END	5/32	5N-703-18	10203	40605
	3/16	6N-703-18	10204	40605
MULTI-GRIP STRUCTURAL NAIL RIVET	3/32	3P-703-18	10247-1	40307
	1/8	4P-703-18	10202-4	40307
	5/32	5P-703-18	10203-2	40605
PLASTIC SPLIT RIVET	3/16	6P-703-18	10167	40605
	3/16	6T-703-18	10209	40605

KLAMP-TITE® IS A REGISTERED TRADEMARK OF AVDEL UK LIMITED. T RIVET® AND MBC® ARE REGISTERED TRADEMARKS OF CHERRY AREOSPACE FASTENERS.

11/11



Rev. 11/11

**GAGE BILT**  
MADE IN U.S.A.

**GAGE BILT Inc.**

44766 Centre Court (586) 226-1500  
Clinton Twp. MI 48038 (586) 226-1505 Fax  
e-mail:solutions@gagebilt.com / www.gagebilt.com

Type:		Fasteners:		Recommended Tool:	
Self-Releasing		See Chart		GBP703E & GB743	
Ref. No.	Qty.	Description		<b>XX-703-18</b>	
1	1	Nose Tip		See Chart	
2	1	Anvil Holder		10757-1	
3	1	Collet		20518	
4	1	Jaw Set		30617	
5	1	Follower		See Chart	
6	1	Spring		405371	
7	1	Jam Nut		70820	