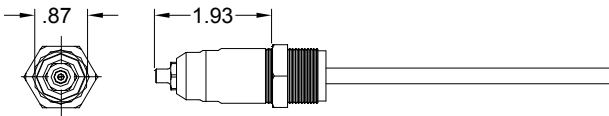


NOSE ASSEMBLY DATA SHEET



RIVET	DIA.	NOSE ASSEMBLY	NOSE TIP 1	FOLLOWER
AVEX (1624 PROTRUDING HEAD)	3/16 2	AV6-743-24SRV	----	----
AVEX (1624 COUNTERSUNK HEAD)	3/16 2	6C-743-24SRV	----	----
KLAMPTITE RIVET	3/16 1	6KT-703-18SRV	10263	703425
	1/4 2	8KT-743-24SRV	----	----
MACHINE SCREW RIVET	5MM 1	MSSM-703-18SRV	10332	703425
MONOBOLT RIVET	3/16 1	MB06-734-20SRV	----	----
	1/4 2,3	MB08-734-20SRV	----	----
NUTPLATE RIVET	3/32 1	3NP-703-18SRV	10231	703431
	1/8 1	5N-703-18SRV	10203	703425
OPEN END	3/32 1	3N-703-18SRV	10201	703431
CLOSED END	1/8 1	4N-703-18SRV	10202	703431
MULTI-GRIP STRUCTURAL 4	5/32 1	5N-703-18SRV	10203	703425
NAIL RIVET	3/16 1	6N-703-18SRV	10204	703425
	1/4 2,3	8Z-743-24SRV	----	----
PLASTIC SPLIT RIVET	3/16 1	6P-703-18SRV	10167	703425
	1/4 2	8P-743-24SRV	----	----
T RIVET	3/16 1	6T-703-18SRV	10209	703425
	1/4 2,3	8T-743-24SRV	----	----
TLR RIVET	1/4 2	8TLR-743-24SRV	----	----

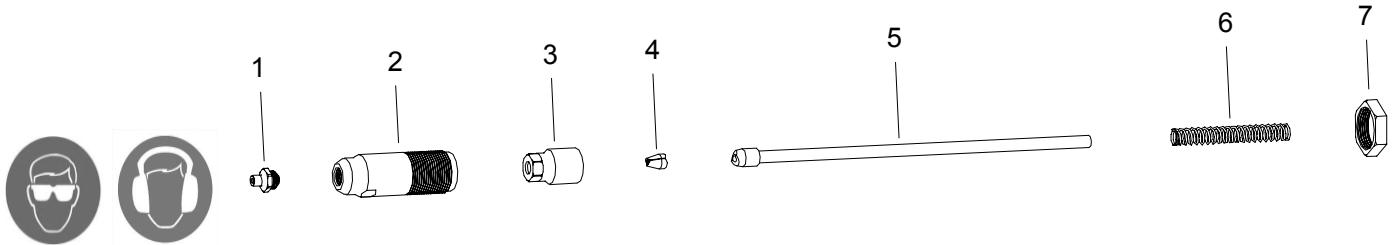
SELECTION CHART FOR PROTRUDING HEAD ONLY

RIVET	DIA.	NOSE ASSEMBLY	NOSE TIP 1	FOLLOWER
MULTI-GRIP STRUCTURAL RIVET 4	3/16 2	PH6-734-20SRV	----	----
	1/4 2,3	PH8-734-20SRV	----	----

GAGE BILT & HUCK STYLE 352 (3/4" DIAMETER) LOCKBOLT AND
BLIND RIVET NOSES MAY BE ATTACHED WITH 703352 ADAPTER

- 1) YOU CAN CHANGE THE 703 NOSE ASSEMBLY (INCLUDED WITH TOOL) TO INSTALL OTHER FASTENERS BY PURCHASING NOSE TIP SHOWN AND USING APPROPRIATE FOLLOWER SHOWN.
- 2) NOSE ASSEMBLIES WITH A 743 DESIGNATION (8Z-743-24) MUST BE ORDERED AS COMPLETE NOSE ASSEMBLY.
- 3) ALUMINUM RIVET STEEL MANDREL ONLY (100 PSI REQUIRED FOR ALL 1/4" STEEL RIVETS).
- 4) 1/4" ALUMINUM ONLY.

NOTE: THE LAST 2 DIGITS OF THE NOSE ASSEMBLY REPRESENTS THE LENGTH THE NOSE EXTENDS FROM THE TOOL. I.E. -20 = 2.0 INCHES



10/04 Rev. 8/07

GAGE BILT
MADE IN U.S.A.

GAGE BILT PRODUCTS CORP.

14500 Barber Drive (586) 771-7664
Warren, Mi 48088 (586) 771-2665 Fax
e-mail: solutions@gagebilt.com / www.gagebilt.com

Type:		Fastener:	Recommended Tool:
Self-Releasing		See Chart	GBP703D & GBP743C
Ref. No.	Qty.	Description	XX-703-18SRV
1	1	Nose Tip	See Chart
2	1	Anvil-Holder	10757-1
3	1	Collet	20518
4	1	Jaw Set (2 pcs.)	30617
5	1	Follower	See Chart
6	1	Spring	405371
7	1	Jam Nut	70820