

GAGE BILT... solutions

Introducing the GBP730BBLB-06

GAGE BILT now offers a complete tool kit for installing CherryMax 1/8" - 3/16", Huck and Cherry blind bolts thru 3/16" per MS21140 & MS21141 (U or S) and MS90353 & MS90354 (U or S) and 3/16" NAS Tension and NAS Shear lockbolts.

The basic kit, GBP731BBLB-08 contains: a pintail catcher bag and a grip selector gage.

Noses assembly:

- CherryMax – Straight and Right Angle with stroke limiter.
- Blind Bolts – Straight noses to install –5 and –6 diameters.
- Lock Bolt - Straight nose to install –6 diameter.

All these items are stored in an easy access carrying case with manuals and data sheets.



GAGE BILT

GAGE BILT PRODUCTS CORP.

44766 Centre Court




(586) 226-1500

Clinton Twp. MI 48038

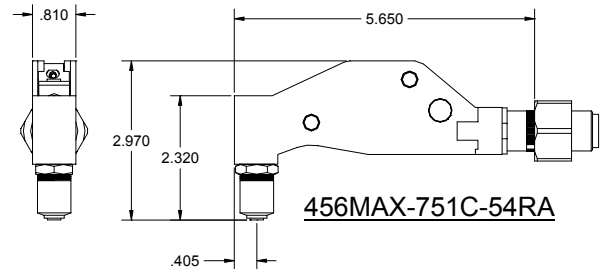
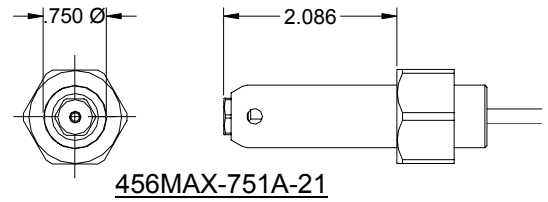
(586) 226-1505 Fax

e-mail:solutions@gagebilt.com / www.gagebilt.com

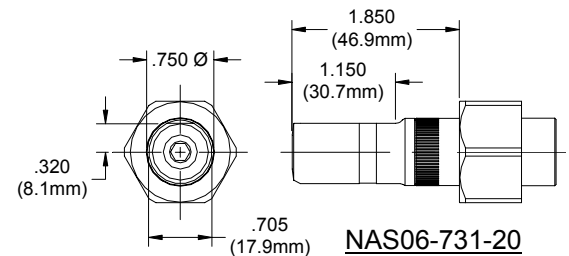
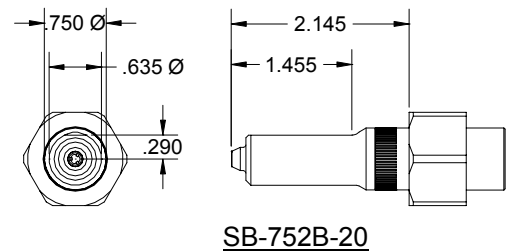
GBP730BBLB-06

Cherrymax, Allmax, Huckmax NAS9301-9312, M7885 BACR15FP/FR & BACR15GF/GK	DIA.	NOSE ASSEMBLIES	
		STRAIGHT	RIGHT ANGLE
	1/8"	456MAX-751A-21 (PULLS ALL 3)	*456MAX-751C-54RA (PULLS ALL 3)
	5/32"		
	3/16"		

*Right Angle nose assemblies require 730157 stroke limiter.



BLIND BOLT MS90353S & U / MS90354S & U MS21140S & U / MS21141S & U CR7000 SERIES BACB30YY, YU, & YT	DIA.	NOSE ASSEMBLIES	
		STRAIGHT	
	5/32"	SB05-752B-20	
	5/32"		
	3/16"	SB06-752B-20	
	3/16"		



	3/16"	GPL3SC-V06, GPL3SP-V06, GPL3SC-DT06, GPL3SP-DT06, GPL 3SC-EU06, GPL3SP-EU06, GPL8TC-V06, GPL8TP-V06, GPL8TC-DT06, GPL8TP-DT06, GPL8TC-EU06, GPL8TP-EU06	STRAIGHT NAS06-731-20
	3/16"	NAS1436, NAS1446, NAS2406, NAS2506, NAS7006, NAS7016, NAS7026, NAS7036	
	3/16"	NAS1456, NAS1466, NAS1476, NAS1516, NAS1526, NAS5136, NAS6936, NAS6946, NAS6956, NAS6966	
	3/16"	NAS2006, NAS2106, NAS2116, NAS2126	

