

GAGE BILT... solutions

Introducing the GBP731BBLB-08

GAGE BILT now offers a complete tool kit for installing CherryMax 1/8" - 3/16", Huck and Cherry blind bolts thru 1/4" per MS21140 & MS21141 (U or S) and MS90353 & MS90354 (U or S) and 3/16" thru 1/4" NAS Tension and NAS Shear lockbolts.

The basic kit, GBP731BBLB-08 contains: a pintail catcher bag and a grip selector gage.

Noses assembly:

- CherryMax – Straight and Right Angle with stroke limiter.
- Blind Bolts – Straight noses to install –6 and –8 diameters.
- Lock Bolt - Straight noses to install –6 and –8 diameters.

All these items are stored in an easy access carrying case with manuals and data sheets.



GAGE BILT

GAGE BILT PRODUCTS CORP.

44766 Centre Court

(586) 226-1500

Clinton Twp. MI 48038

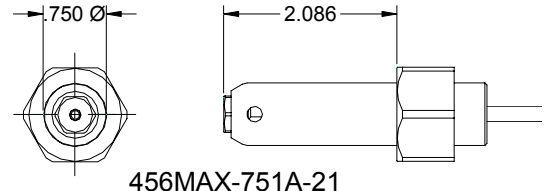
(586) 226-1505 Fax

e-mail:solutions@gagebilt.com / www.gagebilt.com

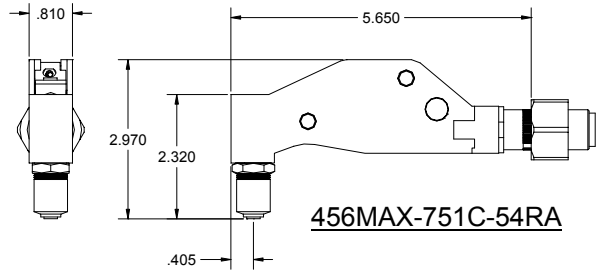
GBP731BBLB-08

Cherrymax, Allmax, Huckmax NAS9301-9312, M7885 BACR15FP/FR & BACR15GF/GK	DIA.	NOSE ASSEMBLIES	
		STRAIGHT	RIGHT ANGLE
	1/8"	456MAX-751A-21 (PULLS ALL 3)	*456MAX-751C-54RA (PULLS ALL 3)
	5/32"		
	3/16"		





*Right Angle nose assemblies require 731154 stroke limiter.

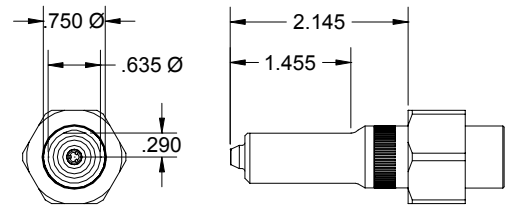


456MAX-751A-21

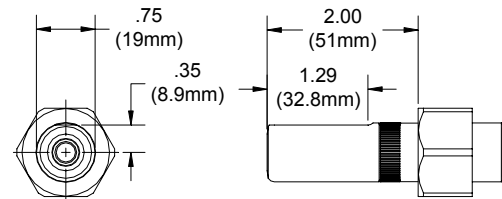


456MAX-751C-54RA

BLIND BOLT MS90353S & U / MS90354S & U MS21140S & U / MS21141S & U CR7000 SERIES BACB30YY, YU, & YT	DIA.	NOSE ASSEMBLIES	
		STRAIGHT	
	3/16"	SB06-752B-20	
	3/16"		
	1/4"	SB08-752B-20 (NOT FOR ALLOY STEEL)	
	1/4"		



SB-752B-20



NAS08-731-20

	3/16"	GPL3SC-V06, GPL3SP-V06, GPL3SC-DT06, GPL3SP-DT06, GPL3SC-EU06, GPL3SP-EU06, GPL8TC-V06, GPL8TP-V06, GPL8TC-DT06, GPL8TP-DT06, GPL8TC-EU06, GPL8TP-EU06	STRAIGHT NAS06-731-20
	3/16"	NAS1436, NAS1446, NAS2406, NAS2506, NAS7006, NAS7016, NAS7026, NAS7036	
	3/16"	NAS1456, NAS1466, NAS1476, NAS1516, NAS1526, NAS5136, NAS6936, NAS6946, NAS6956, NAS6966	
	3/16"	NAS2006, NAS2106, NAS2116, NAS2126	STRAIGHT NAS08-731-20
	1/4"	GPL3SC-V08, GPL3SP-V08, GPL3SC-EU08, GPL3SP-EU08, GPL8TC-V08, GPL8TP-V08, GPL8TC-EU08, GPL8TP-EU08	
	1/4"	NAS1438, NAS1448, NAS2408, NAS2508, NAS7008, NAS7018, NAS7028, NAS7038	
	1/4"	NAS1458, NAS1468, NAS1478, NAS1518, NAS1528 NAS6938, NAS6948, NAS6958, NAS6968	
	1/4"	NAS2008, NAS2108, NAS2118, NAS2128	

