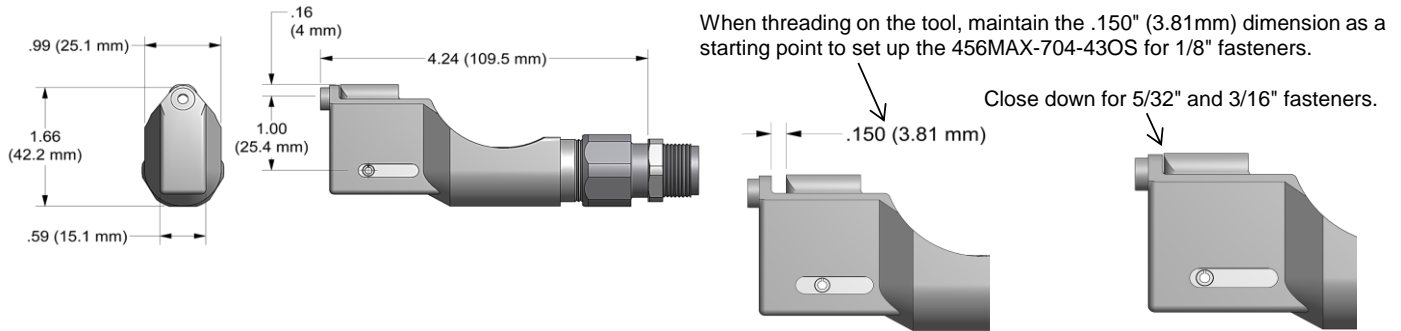


NOSE ASSEMBLY DATA SHEET



When threading on the tool, maintain the .150" (3.81mm) dimension as a starting point to set up the 456MAX-704-43OS for 1/8" fasteners.

Close down for 5/32" and 3/16" fasteners.

Screw drawbolt adapter (10) onto head piston of tool one to two turns. Screw frame adapter (11) into front of head cylinder until drawbolt saddle comes into contact with the front of the frame. When installing the nose assembly rivet pintail may be inserted into the nose assembly to insure proper adjustment. For optimal installation, pintail should be engaged when inserted into the nose. Rotate nose assembly to desired position and tighten jam nut (12) securely. With tool connected to air insert a pintail into the jaws to set position.

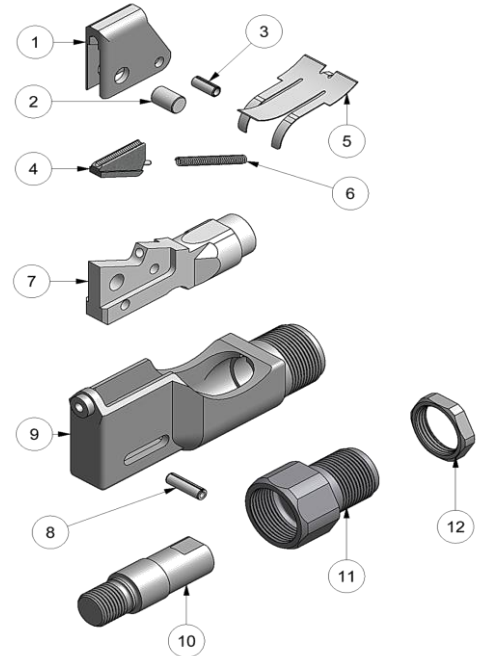
Disassembly:

Remove frame adapter (11) and jam nut (12) providing access to drawbolt adapter (10). Remove drawbolt adapter, use wrench to loosen. Remove guard (5) and roll pin (8) allowing drawbolt and jaw assembly to be lifted out of frame (9). Remove dowel pin (2) and roll pin (3) and dismantle jaw assembly.

Assembly:

Reverse procedure. Insert spring (6) and jaw (4) into drawbolt (7). Place saddle (1) onto drawbolt and install dowel (2) and roll pin (3). Place drawbolt and jaw subassembly into frame (9) and install roll pin (8) and guard (5).

Use Loctite® #242 or equivalent when assembling drawbolt adapter and drawbolt, and when assembling frame adapter to frame.



9/07 REV 1/18

GAGE BILT
MADE in USA

44766 Centre Court Clinton Twp. MI 48038 USA
Ph: +1 (586) 226-1500 Fax: +1 (586) 226-1505
solutions@gagebilt.com / www.gagebilt.com

Type:		Fasteners: CHERRYMAX®, CHERRYMAX® 'AB', MBC® LOCK CREATOR BACR15FR/FP, BACR15GF/GK, NAS1900 S & U SERIES BLIND RIVET WITH DRIVE WASHER	Recommended Tool:
Non Self-Releasing 1/8", 5/32" & 3/16" Ø			GB704
Ref. No.	Qty.	Description	456MAX-704-43OS
1	1	Saddle	78201
2	1	Dowel Pin	76302
3	1	Roll Pin	78103
4	1	Jaw	78104
5	1	Guard	76305
6	1	Spring	76306
7	1	Drawbolt	78207
8	1	Roll Pin	76308
9	1	Frame	76309
10	1	Drawbolt Adapter	78110
11	1	Frame Adapter	76311
12	1	Jam Nut	70104