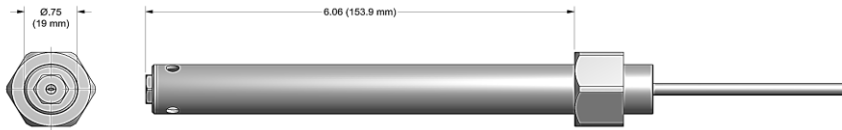


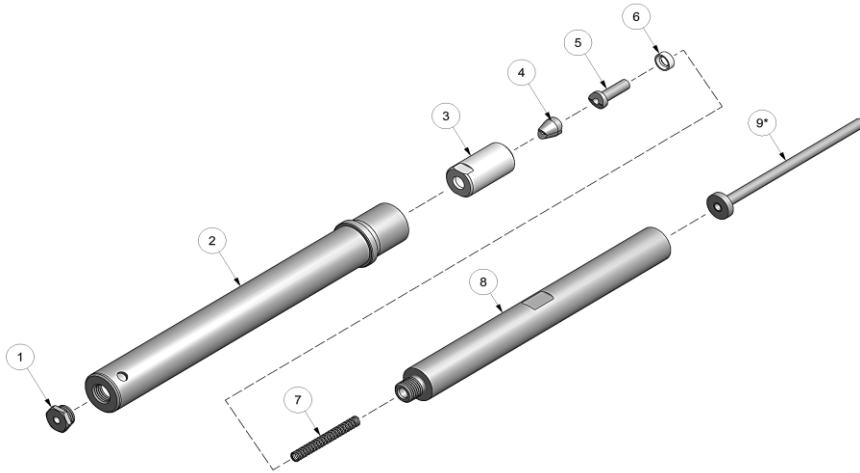
NOSE ASSEMBLY DATA SHEET



ASSEMBLY:

Note: If nose assy is assembled as it is when purchased new, follow steps 5-7 to attach to tool.

1. Insert pintail tube (9) into i.d. of piston on tool.
2. Drop chuck jaws (4) into rear of collet (3). (Note position of jaws in exploded view).
3. Slide bumper (6) over follower and push flush with o.d. Drop follower (5) into rear of collet (3) and onto rear of chuck jaws (4). (Note position in exploded view).
4. Thread collet (3) to extension-collet (8). Snug with 9/16" wrench to extension-collet (8) using flats. Drop spring (7) into rear of extension-collet (8).
5. Insert pintail tube (9) into i.d. of piston on tool. (Note position in exploded view). Thread assembled parts to piston. Snug with 9/16" wrench using flats of collet (3) and hex key into rear of piston of tool.
6. Slide anvil & holder assy (1) over assembled parts attached to piston on tool.
7. Slide retaining nut from tool onto anvil & holder assy (2) and tighten nose assy to tool.



DISASSEMBLY:

Reverse assembly instructions.



11/06 REV. 9/16

*Remove for -6 Intermax and NAS1919/21 U.

GAGE BILT

MADE in USA

44766 Centre Court Clinton Twp. MI 48038 USA
 Ph: +1 (586) 226-1500 Fax: +1 (586) 226-1505
 solutions@gagebilt.com / www.gagebilt.com

Type:		Fastener:	Recommended Tool: GB752
Non Self-Releasing 1/8", 5/32" & 3/16" Ø		CHERRYMAX®, CHERRYMAX® 'AB', MBC® LOCK CREATOR BACR15FR/FP, BACR15GF/GK,	Alternate Tools: GB751 & GB2480(A)
Ref. No.	Qty.	Description	456MAX-751A-61
1	1	Nose Tip	10206-1
2	1	Anvil-Holder Assy	10942-5
3	1	Collet	70105
4	1	Jaw Set	30513
5	1	Follower	40506
6	1	Bumper	70108
7	1	Spring	70109
8	1	Extension-Collet	70467
9*	1	Pintail Tube	40446