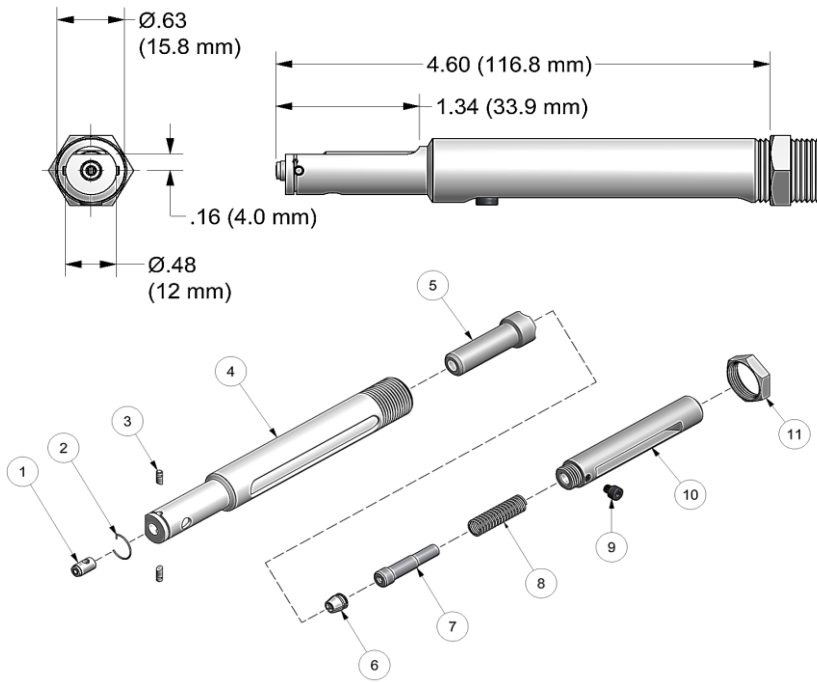


# NOSE ASSEMBLY DATA SHEET



## POINT NOSE ASSEMBLY DOWN WHEN ATTACHING TO TOOL

### ASSEMBLY:

**Note:** If nose assy is assembled as it is when purchased new, follow step 5 to attach to tool.

1. Place chuck jaw (6) into rear of collet (5). Note direction in exploded view. Then place spring (8) onto follower (7) and place flush against rear of chuck jaw (6).
2. Thread assembled collet (5) to extension collet (10) and wrench tighten.
3. Slide assembled collet (5) and extension-collet (10) into anvil holder (4). Align threaded hole in extension-collet (10) with slot in anvil holder (4).
4. Insert screw (9) into threaded hole on extension-collet (10) and tighten.
5. Thread extension-collet (10) to piston on tool and thread anvil holder (4) into tool. Tighten jam nut (11) to face of tool.

### DISASSEMBLY:

Reverse assembly instructions.



**Effective FOD Control (foreign object damage/debris). Install catcher bag on the front of the riveter to catch spent pintail stems. Place nose assembly through grommet on catcher bag and easily fasten catcher bag to tool using the Velcro strap. Features an easily emptied zippered pouch.**

*Use catcher bag 500610 for XX-51-46 straight nose assemblies*

*Catcher bag sold separately*



1/99 Rev. 5/18

**GAGE BILT**  
MADE in USA

44766 Centre Court Clinton Twp. MI 48038 USA  
Ph: +1 (586) 226-1500 Fax: +1 (586) 226-1505  
solutions@gagebilt.com / www.gagebilt.com

Type: Single Action Non Self-Releasing 5/32"Ø	Fasteners: NAS1398A/1399A NAS1738A/1739A RV1000/1100 & 12000	Recommended Tool: GB50
		Alternate Tools: GB51 & GB715

Ref. No.	Qty.	Description	5A-51-46
1	1	Anvil Insert	13434
2	1	Retaining Ring	50308
3	2	Ratchet Pin	15586
4	1	Anvil Holder	10318
5	1	Collet	20326
6	1	Chuck Jaws (Inc. 50318)	30547
7	1	Follower	40304
8	1	Spring	50307
9	1	Socket Head Cap Screw	70303
10	1	Drawbolt	70301
11	1	Jam Nut	70411