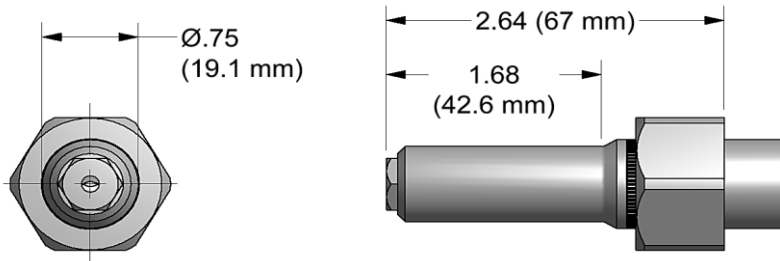


NOSE ASSEMBLY DATA SHEET



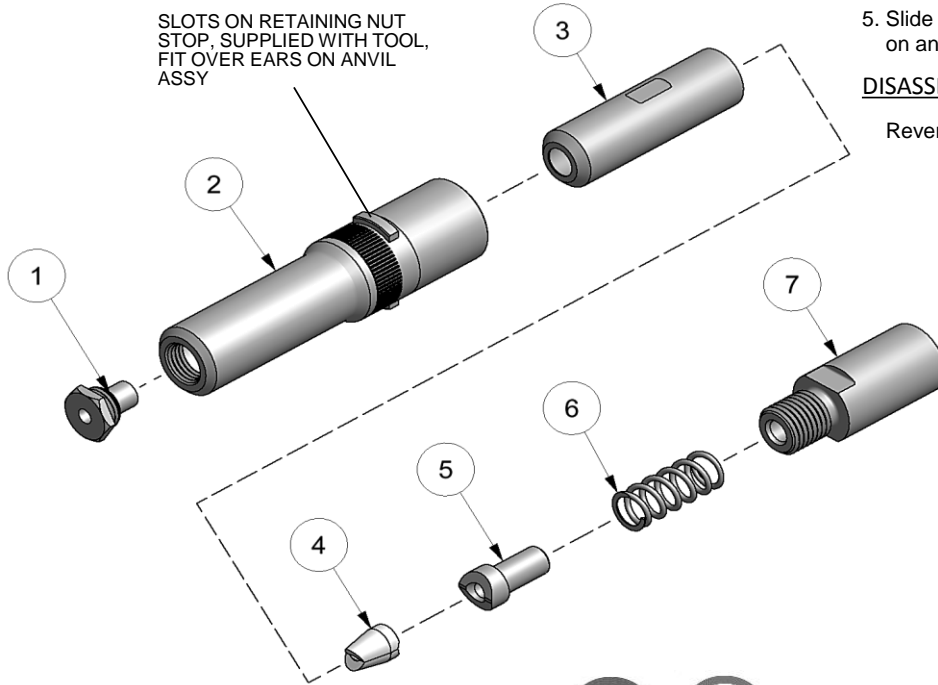
ASSEMBLY:

Note: If nose assy is assembled as it is when purchased new, follow steps 3-5 to attach to tool.

1. Insert jaw set (4) into rear of collet (3). Then place spring (6) onto rear of follower (5) and place follower (4) into collet (3) flush against jaw set (4). (Note direction in exploded view).
2. Thread collet (3) to extension-collet (7) using flats provided.
3. Thread assembled collet (3) and extension-collet (6) onto piston of tool using flats provided and hex in rear of piston.
4. Slide anvil & holder assy (2) over collet (3).
5. Slide retaining nut & retaining nut stop onto ears on anvil and tighten to tool. (See exploded view).

DISASSEMBLY:

Reverse assembly instructions.



*Anvil Assembly consists of #1 and 35210 retainer.

7/17

GAGE BILT
MADE in USA

44766 Centre Court Clinton Twp. MI 48038 USA
Ph: +1 (586) 226-1500 Fax: +1 (586) 226-1505
solutions@gagebilt.com / www.gagebilt.com

Type:		Fastener:		Recommended Tool: GB751	
Non Self-Releasing 3/16" Ø		MS20600, CHERRY® 9000 HUCK® PT, SP & MS RV200 & RV500		Alternate Tools: GB713, GB722, GB752 & GB2480(A)	
Ref. No.	Qty.	Anvil Holder		6C-751-23	
1	1	Nose Tip		10141-2	
2	1	Anvil Holder		17796	
3	1	Collet		20421	
4	1	Jaw Set		30617	
5	1	Follower		40442	
6	1	Spring		50612	
7	1	Extension-Collet		70550-1	