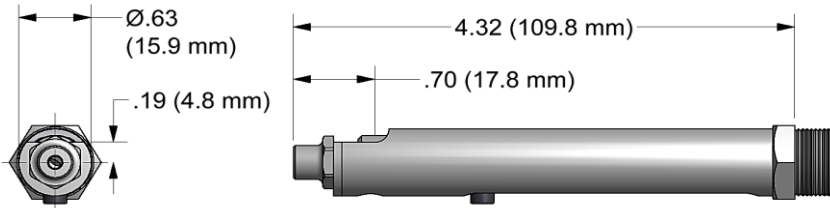


NOSE ASSEMBLY DATA SHEET

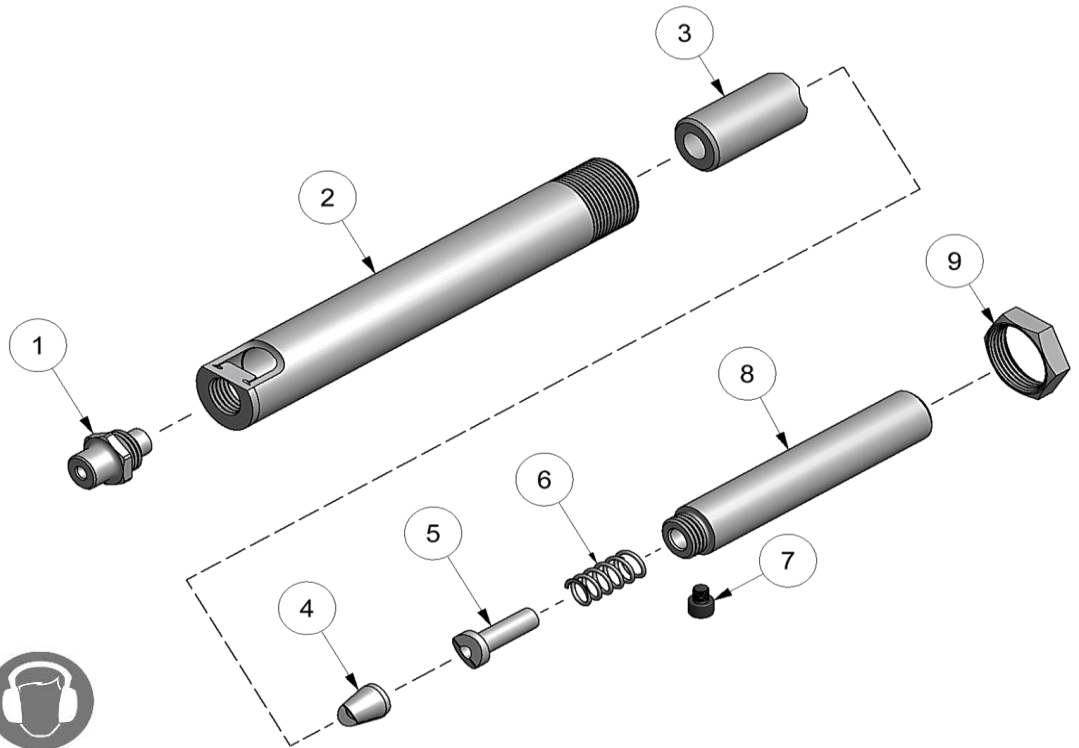


1. Place GB51 on table with collet adapter pointing up.
2. Use palm of hand to push drawbolt and anvil holder on tool and screw down until it stops. (use a rag or padding in palm of hand. Spring in collet requires some force to collapse allowing threads to engage nose fitting).
3. Insert a rivet into front of nose assembly making sure jaws release pintail. If jaws don't release pintail repeat these steps and ensure that collet is full forward in the nose assembly.

Effective FOD Control (foreign object damage/debris). Install catcher bag on the front of the riveter to catch spent pintail stems. Place nose assembly through grommet on catcher bag and easily fasten catcher bag to tool using the Velcro strap. Features an easily emptied zippered pouch.

Use catcher bag 715610 for XX-715-43 straight nose assemblies

Catcher bag sold separately



12/17



GAGE BILT
MADE in USA

44766 Centre Court Clinton Twp. MI 48038 USA
Ph: +1 (586) 226-1500 Fax: +1 (586) 226-1505
solutions@gagebilt.com / www.gagebilt.com

Type: Self-Releasing		CLOSED END NAIL RIVET (ALUMINUM MANDREL)	Recommended Tool: GB715
3/16" Ø			Alternate Tools: GB51
Ref. No.	Qty.	Description	6CEA-715E-43
1	1	Nose Tip	13473
2	1	Anvil Holder	17722-3
3	1	Collet	20301-1
4	1	Chuck Jaw	30617-1
5	1	Follower	40506
6	1	Spring	50420
7	1	Screw	70303
8	1	Drawbolt	70301
9	1	Nut	70411