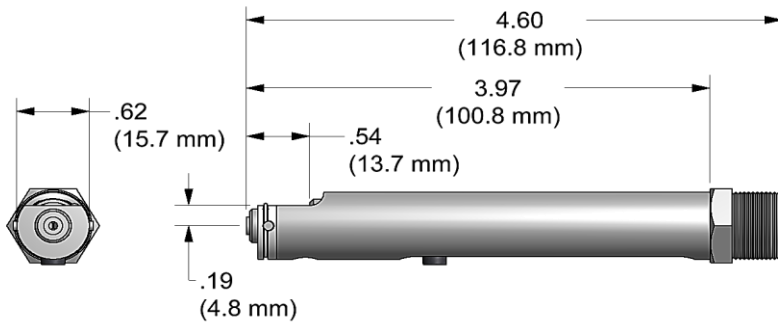


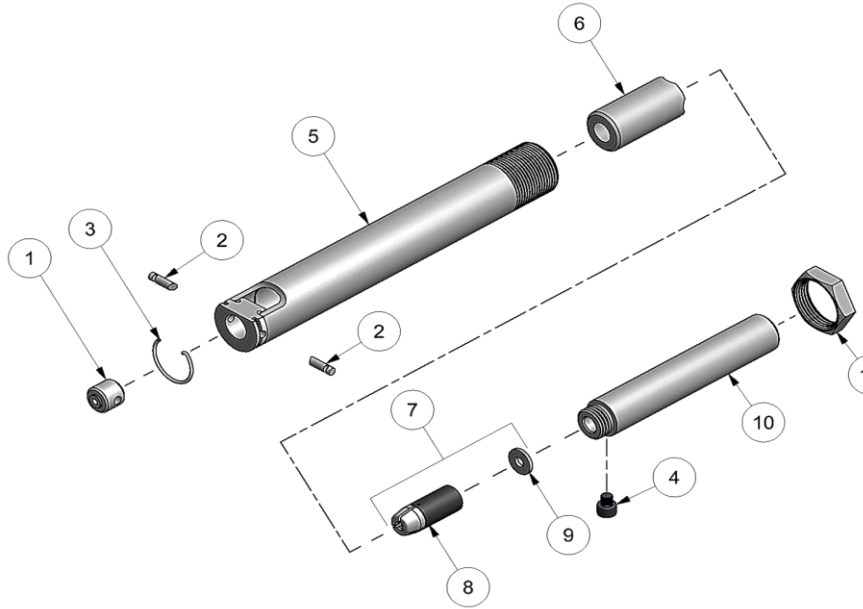
NOSE ASSEMBLY DATA SHEET



ASSEMBLY:

Note: If nose assy is assembled as it is when purchased new, follow step 5 to attach to tool.

1. Place super grip jaw assy (8) into rear of collet (6). (Note direction in exploded view). Then place spacer (9) onto rear of super grip jaw assy (8).
2. Thread assembled collet (6) to extension collet (10) using flats provided and tighten.
3. Slide assembled collet (6) and extension-collet (10) into anvil holder (5). Align threaded hole in extension-collet (10) with slot in anvil holder (5).
4. Insert screw (4) into threaded hole on extension-collet (10) and tighten.
5. Thread extension-collet (10) to piston on tool and thread anvil holder (5) into tool. Tighten jam nut (11) to face of tool.



DISASSEMBLY:

Reverse assembly instructions.



*GB715 & GB51 for 3/16" Ø Self-Plugging aluminum maximum.
 ** GB50 for 3/32" & 1/8" Ø only.
 ***GB752 requires 730715 adapter.

7/07 REV. 5/17

GAGE BILT
 MADE in USA

44766 Centre Court Clinton Twp. MI 48038 USA
 Ph: +1 (586) 226-1500 Fax: +1 (586) 226-1505
 solutions@gagebilt.com / www.gagebilt.com

Type: Single Action Non Self-Releasing		Fasteners: NAS1398A/1399A NAS1738A/1739A RV1000/1100 & 1200		Recommended Tool: *GB715		
3/32", 1/8", 5/32" & 3/16" Ø				Alternate Tools: *GB51, **GB50 & ***GB752		
Ref. No.	Qty.	Description	3A-715B-43	4A-715B-43	5A-715B-43	6A-715B-43
1	1	Anvil Insert	10303	10304	10305	10306
2	2	Ratchet Pin	15504	15503	15501	15501
3	1	Ratchet Pin Spring	50302	50302	50302	50302
4	1	Screw	70303	70303	70303	70303
5	1	Anvil Holder	10301	10301	10301	10301
6	1	Collet	20301	20301	20301	20301
7	1	Jaw Assembly (Inc. 8 & 9)	30314-A4	-----	-----	-----
8	1	Super Grip Jaw Assy	30314-S12	30418-S	30529-S	30633-S4
9	1	Spacer	A-1713	-----	-----	-----
10	1	Drawbolt	70301	70301	70301	70301
11	1	Locknut	70411	70411	70411	70411