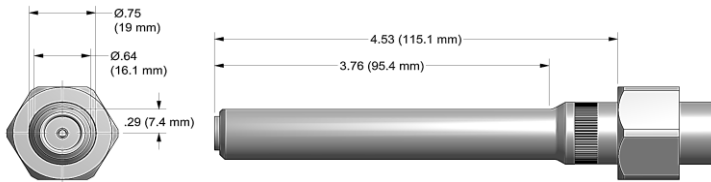
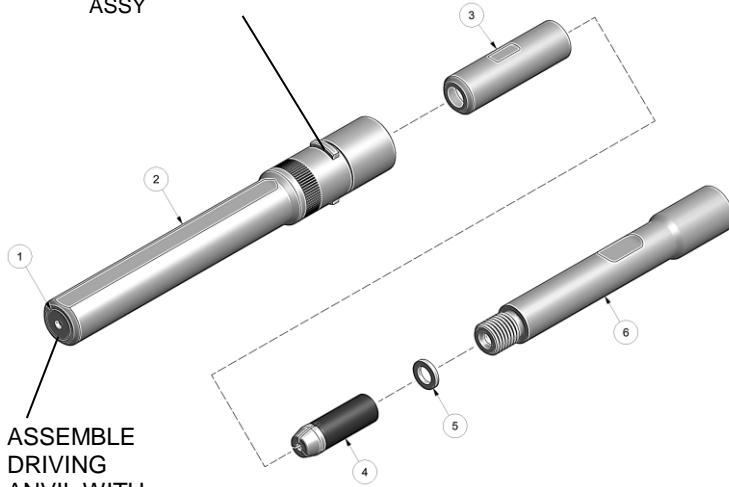


# NOSE ASSEMBLY DATA SHEET



**NOTE!**  
Use with driver:  
ASP-05

SLOTS ON RETAINING NUT STOP, SUPPLIED WITH TOOL, FIT OVER EARS ON ANVIL ASSY



ASSEMBLE DRIVING ANVIL WITH C'BORE FACING OUT

## ASSEMBLY:

**Note:** If nose assy is assembled as it is when purchased new, follow steps 3-5 to attach to tool.

1. Insert super grip jaw assy (4) into collet (3).
2. Place spacer on rear of super grip jaw assy (4).
3. Snug tighten assembled collet (3) to extension-collet (6) using flats provided.
4. Snug tighten assembled parts to piston on tool using flats on collet (3) and hex on piston.
5. Slide anvil (2) over assembled collet (3).
6. Slide retaining nut stop (see note in exploded view) and retaining nut over anvil (2) and tighten nose assembly to tool.

## DISASSEMBLY:

Reverse assembly instructions.



1/12 REV 10/16

**GAGE BILT**  
MADE in USA

44766 Centre Court Clinton Twp. MI 48038 USA  
Ph: +1 (586) 226-1500 Fax: +1 (586) 226-1505  
solutions@gagebilt.com / www.gagebilt.com

Type:		Fastener:	Recommended Tool: GB752
Non Self-Releasing ASP05		2 ASP®, ASP PF, ASP FF ASP F & ASP LC	Alternate Tools: GB713,GB722 & GB2480(A)
Ref. No.	Qty.	Description	ASP05-752C-45
1	1	Driving Anvil	15581
2	1	Anvil & Holder Assy	13417
3	1	Collet	20727
4	1	Super-Grip Jaw Assy	30425-CS
5	1	Spacer	70572
6	1	Extension-Collet	70551