

NOSE ASSEMBLY DATA SHEET

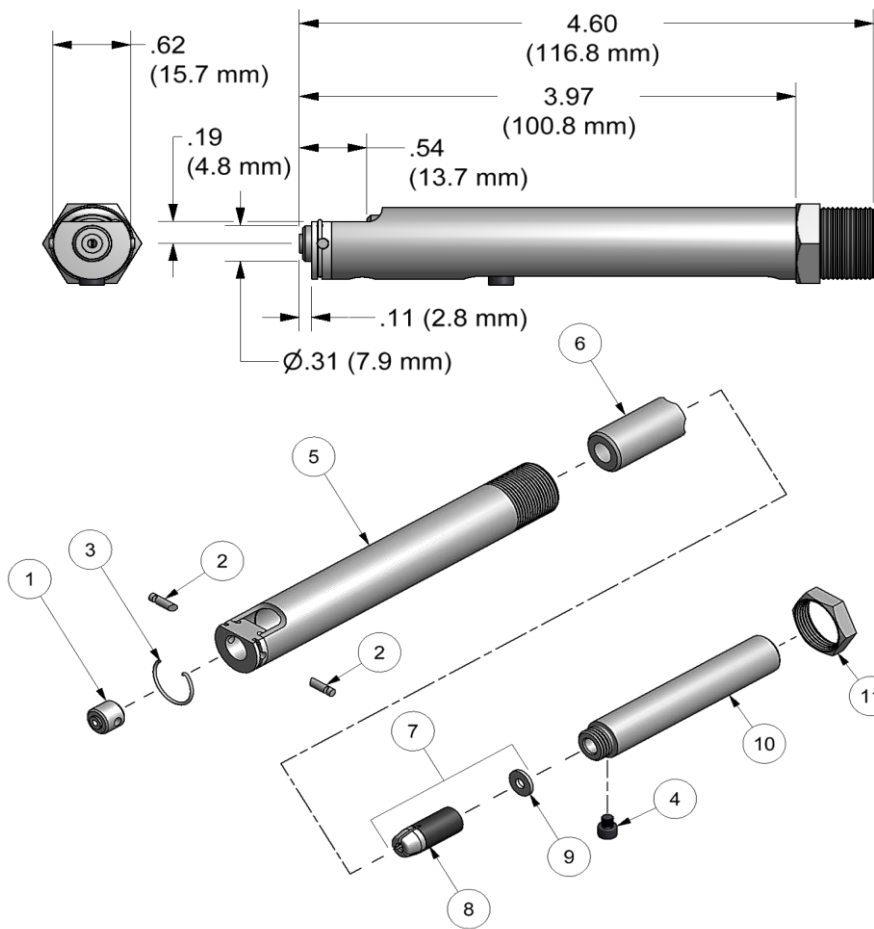
ASSEMBLY:

Note: If nose assy is assembled as it is when purchased new, follow step 5 to attach to tool.

1. Place super grip jaw assy (8) into rear of collet (6). (Note direction in exploded view). Then place spacer (9) onto rear of super grip jaw assy (8).
2. Thread assembled collet (6) to drawbolt (10) and hand tighten.
3. Slide assembled collet (6) and drawbolt (10) into anvil holder (5). Align threaded hole in drawbolt (10) with slot in anvil holder (5).
4. Insert screw (4) into threaded hole on drawbolt (10) and tighten.
5. Thread drawbolt (10) to piston on tool and thread anvil holder (5) into tool. Tighten jam nut (11) to face of tool.

DISASSEMBLY:

Reverse assembly instructions.



*Requires 730715 adapter.

**These tools for 3/16" Ø Self-Plugging aluminum maximum.

7/07 Rev. 1/18

GAGE BILT
MADE in USA

44766 Centre Court Clinton Twp. MI 48038 USA
Ph: +1 (586) 226-1500 Fax: +1 (586) 226-1505
solutions@gagebilt.com / www.gagebilt.com

Type: Single Action		Fasteners: NUT PLATE RIVETS MS20600 SERIES CCR224/264/274 MS/9SP/PT BACR15CC/CF/DA/DR		Recommended Tool: **GB715		
3/32", 1/8", 5/32" & 3/16" Ø				Alternate Tools: **GB51 & *GB752		
Ref. No.	Qty.	Description	3C-715B-43	4C-715B-43	5C-715B-43	6C-715B-43
1	1	Anvil Insert	10383	10384	10385	10386
2	2	Ratchet Pin	15504	15503	15501	15502
3	1	Ratchet Pin Spring	50302	50302	50302	50302
4	1	Screw	70303	70303	70303	70303
5	1	Anvil Holder	10301	10301	10301	10301
6	1	Collet	20301	20301	20301	20301
7	1	Jaw Assembly (Inc. 8 & 9)	30314-A4	-----	-----	-----
8	1	Super Grip Jaw Assy	30314-S12	30418-S	30529-S	30633-S5
9	1	Spacer	A-1713	-----	-----	-----
10	1	Drawbolt	70301	70301	70301	70301
11	1	Locknut	70411	70411	70411	70411