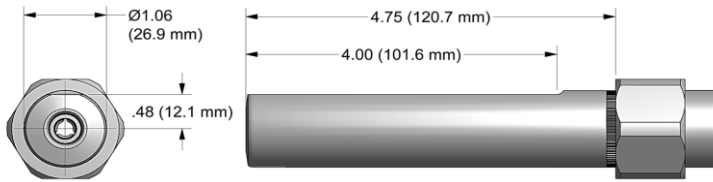
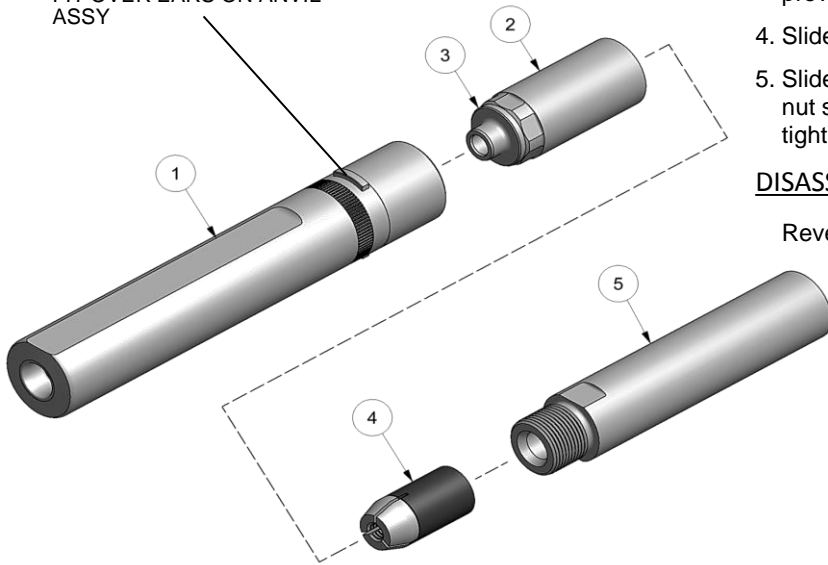


NOSE ASSEMBLY DATA SHEET



SLOTS ON RETAINING NUT STOP, SUPPLIED WITH TOOL, FIT OVER EARS ON ANVIL ASSY



ASSEMBLY:

Note: If nose assy is assembled as it is when purchased new, follow steps 3-5 to attach to tool.

1. Insert super grip jaw assy (4) into rear of collet assy (2). (Note direction in exploded view).
2. Thread collet assy (2) to extension-collet (5) using flats provided. Insert ejector (3) into front i.d. of collet (2).
3. Thread assembled collet (2) and extension-collet (5) onto piston of tool using flats provided and hex in rear of piston.
4. Slide anvil assy (1) over collet (2).
5. Slide retaining nut over anvil (Note: retaining nut stop not used on this nose assy) and tighten to tool.

DISASSEMBLY:

Reverse assembly instructions.

10/06 REV 1/18

*Anvil Assembly includes 35308 retainer.

GAGE BILT
MADE in USA

44766 Centre Court Clinton Twp. MI 48038 USA
Ph: +1 (586) 226-1500 Fax: +1 (586) 226-1505
solutions@gagebilt.com / www.gagebilt.com

Type:		Fastener:	Recommended Tool:
Non Self-Releasing 5/16 Ø		OSR-10	GB756
			Alternate Tools: GB2581(A)
Ref. No.	Qty.	Description	OS10-756-48
1	1	*Anvil Assy	11052
2	1	Collet Assy (Includes #3)	21024
3	1	Ejector	81009-1
4	1	Super Grip Jaw Assy	30869-S
5	1	Extension-Collet	71220